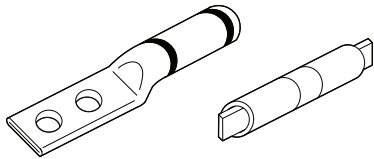


INSTALLATION INSTRUCTIONS

Compression Connectors, lugs and splices

For copper lugs and splice types CTL-L, LCN CU and MS



CAUTION:

- Product should be installed by a qualified electrician in accordance with national and local electrical codes.



Important

Read and understand all instructions and safety information in this manual before operating or servicing this tool. Be aware of proper usage and potential hazards.



WARNING:

- Risk of shock, disconnect power before installation.

Installation instructions

1. Confirm compatibility of aluminum connector and cable size.(Figure 1).
2. Strip cable insulation avoiding damage to the cable's strands (Figure 2).
3. Wire brush (Reference ABB catalog number WWB1) the cable side which will be inserted into the connector (Figure 3).
4. Fully insert cable into connector (Figure 4).
5. Refer to the Tool and Die Index. Select the appropriate the tool/die combinations listed for the cable size. Crimp the connector the number of times shown on the chart for tool/die combination. (**NOTE:** Splices: make first crimp just outside the knurl on each side of the center and space crimps uniformly along the splice. Lugs: make first crimp at the inner end of barrel and space crimps uniformly along the barrel.
6. Wipe off any excess oxide inhibitor.

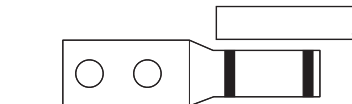


Figure 1

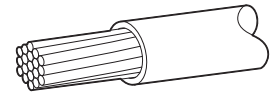


Figure 2

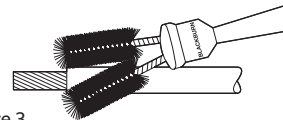


Figure 3

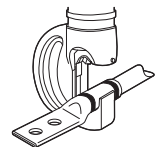


Figure 4

Tool and die index

Product selection

Copper stranded AWG size	Die color	Blackburn® tools																Dieless hydraulic tools			
		Mechanical				Hydraulic				Mechanical				Hydraulic				Blackburn® connectors have expanded cable range when installed with the following tools			
		OD58	Crimps req.	NRG 2508	Crimps req.	JB12A,B HCT7508 HCT1239	Crimps req.	MY29-3	Crimps req.	Y35 Y39 Y46	Crimps req.	TBM55	Crimps req.	TBM85	Crimps req.	TBM15	Crimps req.	VC6†	VC7†	VC8C††	VC7FT
8	Red	BY15C	4 ⁽⁶⁾	**	2	B71CH	1	**	2	—	—	13454	2 ⁽⁶⁾	13461	2	21	2	NOTE: Use maximum cable for connector selection.			
6	Blue	BY17C	4 ⁽⁶⁾	**	2	B73CH	1	**	2	U5CRT	2 ⁽⁶⁾	13454	2 ⁽⁶⁾	13461	2	24	2	Blackburn®	VP6FT	—	—
																		Anderson	VC6†	VC7†	VC8C††
																		VC6FT	VC7FT	VC8C††	VC7FT
4	Gray	BY19C	4 ⁽⁶⁾	**	2	B74CH	1	**	2	U4CRT	2 ⁽⁶⁾	13454	2 ⁽⁶⁾	13461	2	29	2	AL or Cu wire range			Crimps per end
2 & 3	Brown	BY21C	5 ⁽⁶⁾	**	2	B75CH	2 ⁽⁵⁾	**	2	U2CRT	2	13454	2	13461	2	33	2	6-2	2	4	—
1	Green	BY53C	4 ⁽⁶⁾	**	2	B05CH	2 ⁽⁶⁾	**	2	U1CRT	2	13455	2	13462	2	37	2	6-1	2	5	—
1/0	Pink	BY23C	5 ⁽⁶⁾	**	2	B06CHI	2	**	2	U25RT	2 ⁽⁶⁾	13455	2	13462	2	42H	3	6-1/0	2	5	—
2/0	Black	BY28C	5 ⁽⁶⁾	**	2	B72CH	2 ⁽⁶⁾	**	3	U26RT	2 ⁽⁶⁾	13455	3 ⁽⁶⁾	13462	3 ⁽⁶⁾	45	3 ⁽⁶⁾	4-2/0	2	5	—
3/0	Orange	BY25C	5 ⁽⁶⁾	**	4	B08CH	2 ⁽⁶⁾	**	4	U27RT	2	13455	3 ⁽⁶⁾	13462	3 ⁽⁶⁾	50	3	2-3/0	2	6	—
4/0	Purple	BY31C	6 ⁽⁶⁾	**	4	B09CH	2 ⁽⁶⁾	**	4	U28RT	3 ⁽⁶⁾	13456	4 ⁽⁶⁾	13463	4 ⁽⁶⁾	54H	4	1-4/0	2	6	—
250	Yellow	BY27C	6	**	4	B26CH	3 ⁽⁶⁾	**	4	U29RT	3 ⁽⁶⁾	13456	4	13463	4	62	2	1/0-250†	3	6	—
300	White	—	—	—	—	B10CHI B10CH	3 ⁽⁶⁾	—	—	U30RT	3	—	—	13465	6	66	2	2/0-300†	3	6	—
350	Red	—	—	—	—	B11CH	3	—	—	U31RT	4	—	—	13466	6	71H	4	3/0-350†	3	6	—
400	Blue	—	—	—	—	B11CH	4 ⁽⁶⁾	—	—	U32RT	4	—	—	13467	6	76	2	4/0-400†	3	6	—
500	Brown	—	—	—	—	B12CHI B12CH	4	—	—	U34RT	5	—	—	13468	8	87H	4	4/0-500†	3	6	3††
600	Green	—	—	—	—	B36CH	4	—	—	U36RT	5	—	—	—	—	94H	4	250-600	—	8	3†††
																				VC7FT only	
750	Black	—	—	—	—	B39CII ⁽¹⁾ 6039RT ⁽²⁾	5 ⁽⁶⁾ 2	—	—	U39RT ⁽³⁾	5 ⁽⁶⁾	—	—	—	—	106H	4	500-750	—	9	4
																				VC7FT only	
1000	—	—	—	—	—	6044RT ⁽²⁾	2 ⁽⁶⁾	—	—	P44RT ⁽⁴⁾	6	—	—	—	—	125H	5	750-1000	—	—	4

** Adjustable indent tool. No insert dies required.
⁽¹⁾ HCT1239 and HCT7508 only. ⁽²⁾ JB60A, JB60B only. ⁽³⁾ Y39, Y46 only ⁽⁴⁾ Y48B only, ⁽⁵⁾ Y48B only, ⁽⁶⁾ overlap crimps.

† Users of VC6 and VC7 tools must strip off an extra 1/8" of insulation from one end of cable to permit removal of tool over cable sizes 250 MCM and larger on CSP connectors.
 †† Also use VC8 tool with "AL" ribs. ††† VC8 tool crimps 500 MCM only.
 †††† VC8 tool crimps 500 - 600 MCM only.

Product search

