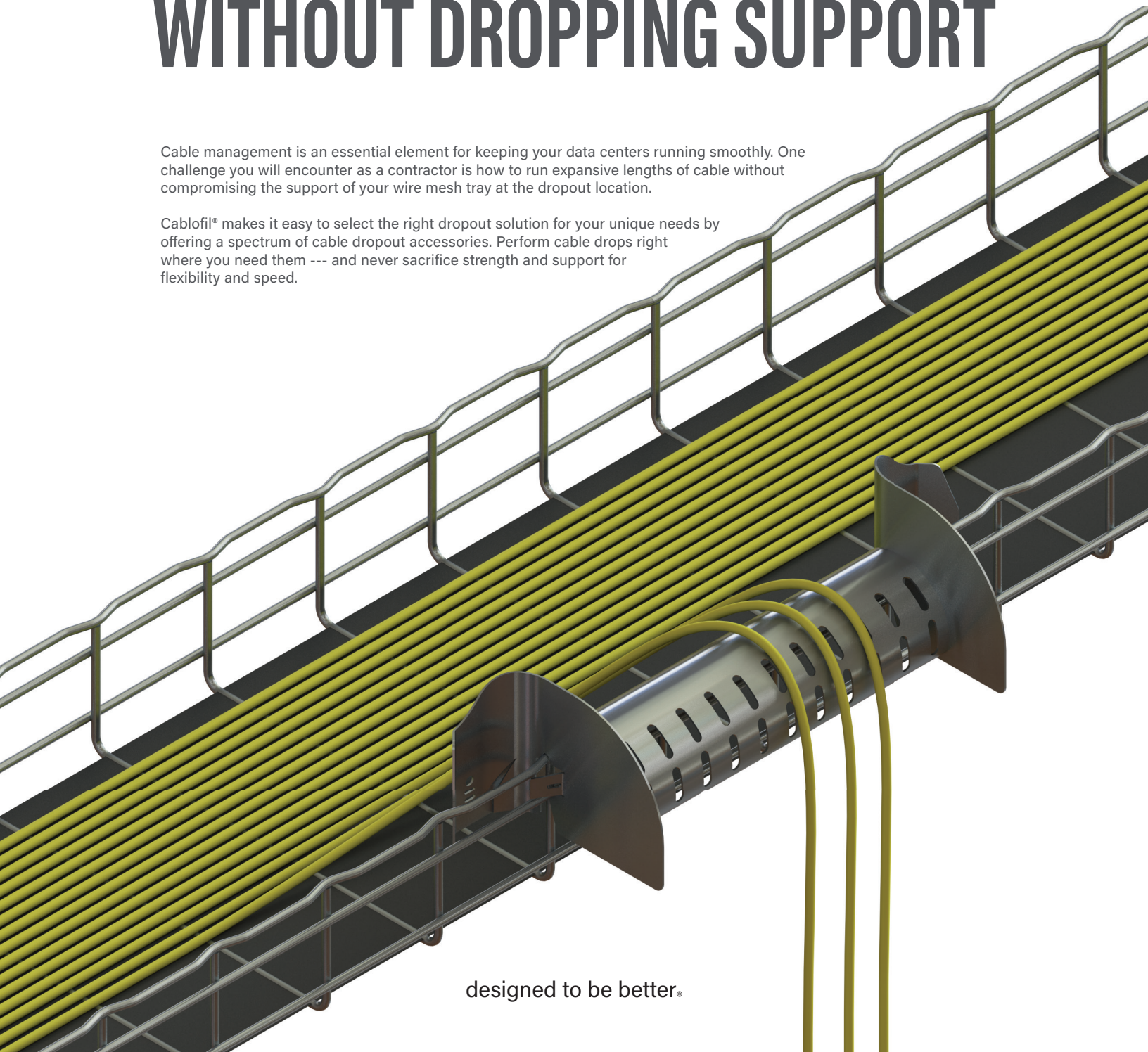




DROP CABLES WITHOUT DROPPING SUPPORT

Cable management is an essential element for keeping your data centers running smoothly. One challenge you will encounter as a contractor is how to run expansive lengths of cable without compromising the support of your wire mesh tray at the dropout location.

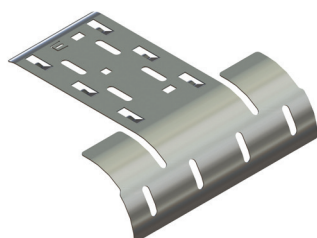
Cablofil® makes it easy to select the right dropout solution for your unique needs by offering a spectrum of cable dropout accessories. Perform cable drops right where you need them --- and never sacrifice strength and support for flexibility and speed.



designed to be better.®

THE GOOD

Basic Dropout (BDO)



The Basic Dropout (BDO) smooths the transition of cabling dropping out of wire mesh tray. These dropouts snap into place without hardware and reduce the strain of cables as they exit or enter the tray. It mounts at the end of the wire basket cable tray parallel or perpendicular to the tray bottom.

The 4" width capacity allows small cable bundles through the mesh. The full 90-degree drop eliminates pressure points on cables as the 2" radius reduces cable stress. Extended side wings offer extra cable support. Tie-down slots are available to assist and secure the cables as they exit the dropout.

With this dropout solution, you will need to cut wires on your cable tray. The solution is compatible with all Cablofil® Wire Mesh trays.

THE BETTER

Standard Dropout (SDO)



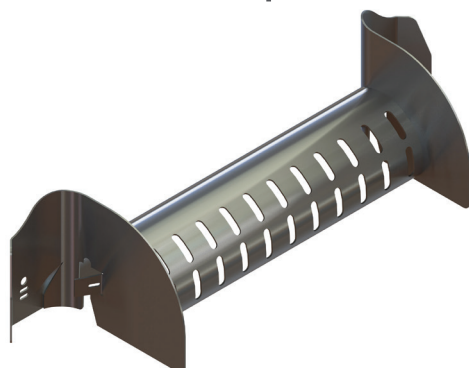
The Standard Dropout (SDO) offers stronger cable support and creates a seamless transition for your cables on the side of your wire mesh tray without any cutting. This allows you to protect your cables as they exit the tray while maintaining all the strength and support of your wire mesh.

The SDO is available in 150 (6") and 300 (12") widths that when used in combination provide options for 6", 12", 18", and 24". The full 90-degree drop eliminates pressure points while the 3" radius reduces stress on the cables.

The solution is compatible with all Cablofil® Wire Mesh trays by interlocking on the side wires for added rigidity. The dropout mounts over the side or at the end of the wire basket cable tray (both atop or below wire basket wires). Tie-down slots are available to assist and secure the cables as they exit the drop out. No tray cutting required.

THE BEST

Universal Dropout (UDO)



The Universal Dropout (UDO) is the premiere Cablofil® dropout solution. As the dropout with the strongest cable support, the UDO protects larger capacities of cables all without compromising the strength of your cable tray. It is ideal for copper, fiber optic, or PoE cabling.

Our strongest dropout solution makes it easy to perform cable drops directly off the side of the tray without having to make any wire tray cuts or modifications. Tie-down slots are available to assist and secure the cables as they exit the drop out. Installation slots allow for easy install directly on the edge of the wire mesh tray and makes for easy moves, changes, and reconfigurations.

The 120-degree bend in two directions ensures cables do not have any potential pinch points or sharp edges. The 2" tall side rails provide cable protection and organization. The solution is available in a variety of finishes (electrozinc, white, and black) and sizes (8", 12", 18", and 24") to meet your unique design needs.

SHOP THE SOLUTION SPECTRUM

As you move up the product line, you will experience increased reliability and decreased installed costs.

| | THE GOOD - BDO | THE BETTER - SDO | THE BEST - UDO |
|------------------------------|----------------|------------------|----------------|
| Simple Installation | ✓ | ✓ | ✓ |
| Tie-Down Slots | ✓ | ✓ | ✓ |
| Compatible w/ Service Trays | ✓ | ✓ | ✓ |
| Cut-Free Installation | ✗ | ✓ | ✓ |
| Variety of Sizes | ✗ | ✓ | ✓ |
| Supports Large Cable Bundles | ✗ | ✗ | ✓ |
| Safety Side Rails | ✗ | ✗ | ✓ |



designed to be better.®



Electrical Wiring Systems
 60 Woodlawn Street
 West Hartford, CT 06110
 1.877.BY.LEGRAND (295.3472)
www.legrand.us

FOLLOW US

