

# CABLE CHANNEL

## MADE SIMPLE

SNAP-IN HARDWARE WITH  
25% FEWER SUPPORTS



The patent-pending design for our aluminum Cable Channel makes for a super-strong splice that's easy to install and stronger tray that makes spans up to 16' possible. The splice design utilizes extruded channels on each side of the tray and optional push pin hardware that just snaps in place without any tools or welding, creating a splice with excellent load capacity. It's a complete system with pre-fabricated horizontal bends, vertical bends and any accessory you will need.



Patent-pending extruded channels allow for longer spans and slide-in splices and accessories.

designed to be better.™

**Splice Hole Pattern**  
repeats every 12"  
to simplify splicing  
cut lengths.

**Cable Tie  
Down Slots**

**Cable Drop  
Out Holes**

**Push-Pin Locking Hardware**  
Snap-in hardware locks in  
place without tools.

**Slide-in Splice Hardware**  
Extruded channels on both  
sides of tray keep joints rigid,  
allowing longer support spans.

**Snap-on Covers for Straight Sections**  
Covers are designed to snap into  
place without extra hardware or tools.

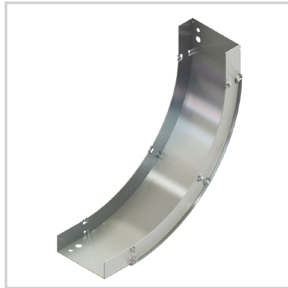


# A COMPLETE SYSTEM FOR CABLE DROPS.



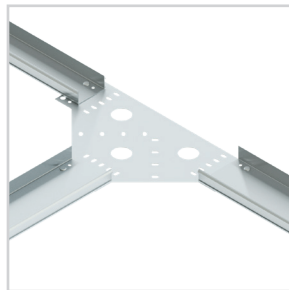
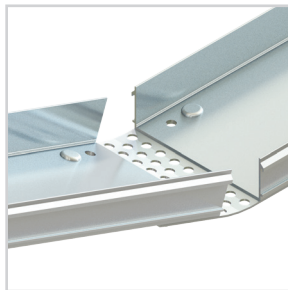
## Straight Sections

- Solid and ventilated
- 1 3/4" side wall
- 4" and 6" widths
- 10', 12' and 20' sections



## Elbows and Bends

- Horizontal, vertical inside and vertical outside
- 90, 60, 45 and 30 degree
- 12" and 24" radius bends
- Low cost flat cross, tees and elbow connectors



## Covers, Mounting and Splicing Hardware

- Easily mounts to ITray
- Complete cover assortment
- Snap-in splice hardware
- Standard and expansion splices



## 25% FEWER SUPPORTS NEEDED.

Stronger tray requires fewer supports with up to 16' spans possible. Saves installation time and reduces overall material cost.

## SNAP-IN SPLICE HARDWARE.

Slide splices together and lock in place with snap-in hardware.

## SNAP-ON COVERS.

Covers are designed to snap into place without extra hardware or tools.

## MULTIPLE TRAY SIZES.

1 3/4" deep solid or vented tray styles in 4" and 6" widths with up to 20' lengths.

## MULTIPLE TRAY FINISHES.

Aluminum, galvanized and stainless steel finishes stand up to any installation environment.

Visit [legrand.us/cablechannel](http://legrand.us/cablechannel) for more information.



### Electrical Wiring Systems

8319 State Route 4  
Mascoutah, IL 62258  
800.658.4641  
[www.legrand.us/cablofil](http://www.legrand.us/cablofil)

Canada  
905.738.9195  
[www.legrand.ca](http://www.legrand.ca)