

Datasheet

ESM500 - Exterior Maglock

Product Description

High performance magnetic locking at a cost-effective price. The ESM500 is a surface maglock which provides up to 1,100 lb (500 kg) of holding force. The magnet comes with its armature plate, fixing kit, and full fitting instructions. Fully compatible with CDVI brackets, housings, and accessories, the ESM500 is a flexible and robust locking solution for a wide range of projects.



Key Features

- Outdoor, surface mount installation
- up 1,100 lb (500 kg) holding force
- Holding force sensor (red & green)
- Fail safe
- Z & L bracket available (sold separately)
- UL listed



Certification



Certification



DEEE



Certification



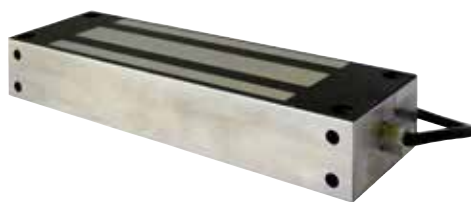
IP42



23°F to 113°F
(-5°C to 45°C)

Product Specifications

Material:	Stainless steel
Mounting:	Surface
Lock mode:	Fail safe
Holding force:	1,100 lb (500 kg)
Sensor:	Holding force (LED)
Weight:	9.2 lb, 4.2 kg
Dimensions	
Maglock:	9 x 2.5 x 1.65 in. (230 x 63 x 40 mm)
Armature plate:	7.3 x 2.5 x 0.5 in. (185 x 61 x 12 mm)



Electrical Specifications

Power input:	12/24V DC
Consumption:	500 mA @ 12V DC 250 mA @ 24V DC