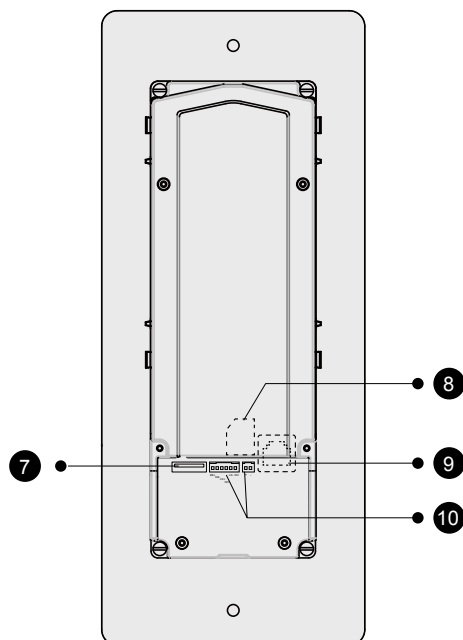
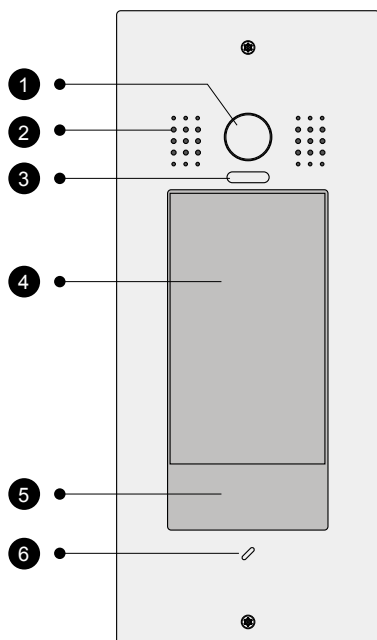


1 FUNCTIONS & CONNECTIONS



1 Camera

2 Speaker

3 LED Lights
Illuminates subjects in dark environments.

4 LCD Screen

5 Card Reader
Allows the door to be unlocked by using a card.

6 Microphone

7 USB connector

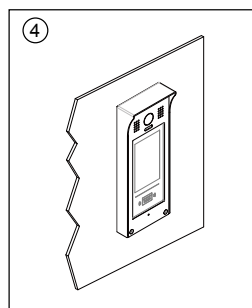
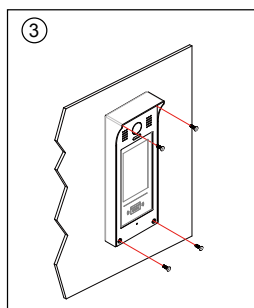
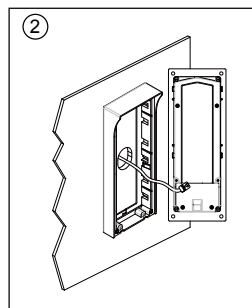
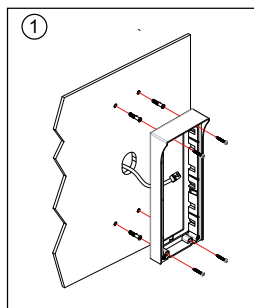
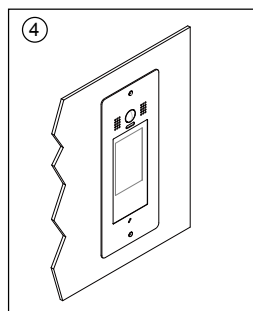
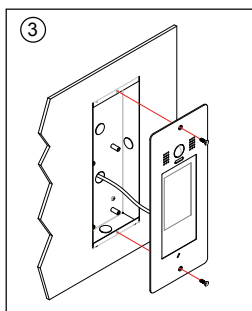
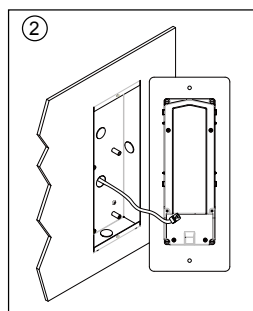
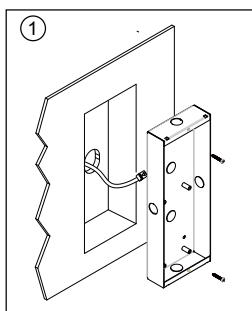
8 SD card connector

9 LAN connector
Use to connect the door station to the network.

10 Terminal connector
Used to connect external devices (lock).

2**MOUNTING**

1. The ideal installation height is between 57 and 63 inches (145 and 160 cm).
2. After connecting the cable correctly, fix the rear panel with screws.
3. Screw the front panel.

Surface mount (IP-MDS)**Flush mount (IP-MDSF)**

3

LOCK CONNECTION

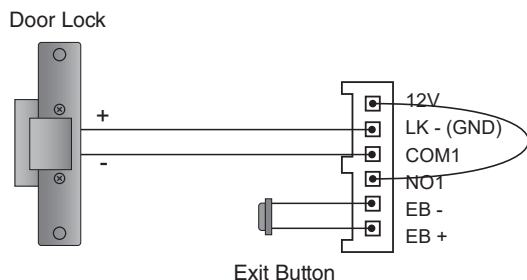
The IP-MDS/IP-MDSF can manage two locks.

Configuring Lock 1

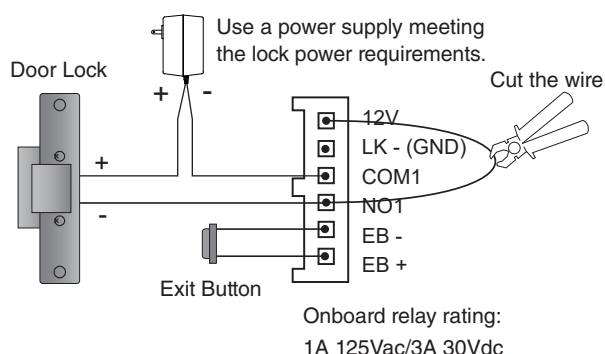
The configuration of lock 1 is done on "**Lock1 mode**" (see step 7).
 Here are the different configurations depending on the lock type used:

- "**Lock1 mode**" set to "**Normally Open**" for fail secure lock, power-on-to-unlock (default).
- "**Lock1 mode**" set to "**Normally Closed**" for fail safe lock, power-off-to-unlock.

Wiring diagram using onboard power supply



Wiring diagram using external power supply



Configuring Lock 2

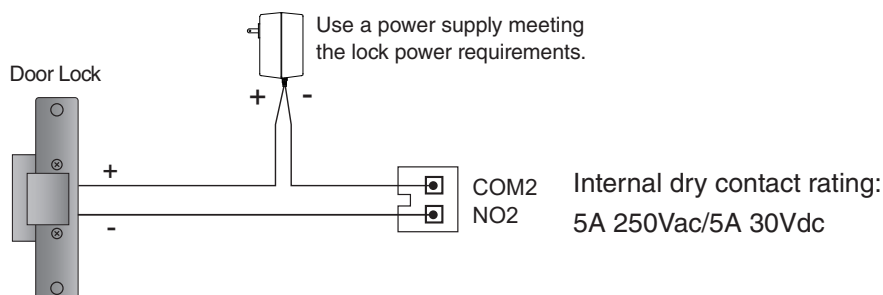
The configuration of lock 2 is done on "**Lock2 mode**" (see step 7).
 Here are the different configurations depending on the lock type you used:

- "**Lock2 mode**" set to "**Normally Open**" for fail secure lock, power-on-to-unlock (default).
- "**Lock2 mode**" set to "**Normally Closed**" for fail safe lock, power-off-to-unlock.

Lock 2 works with external power supply only.

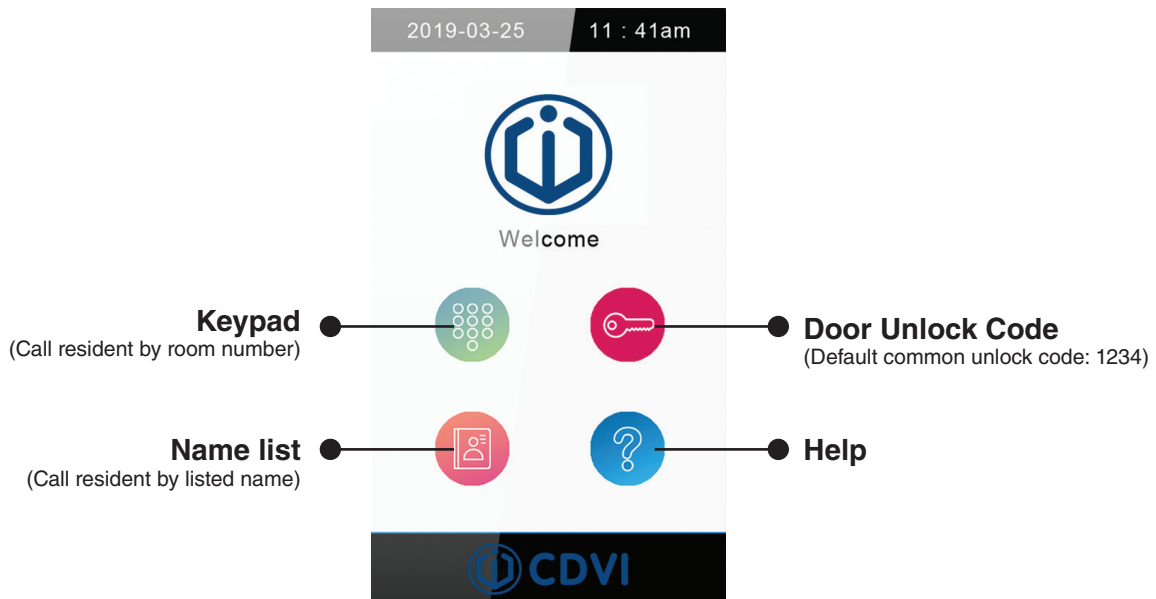


It is recommended to connect only locks allowing a free exit on the COM2/NO2 terminals.



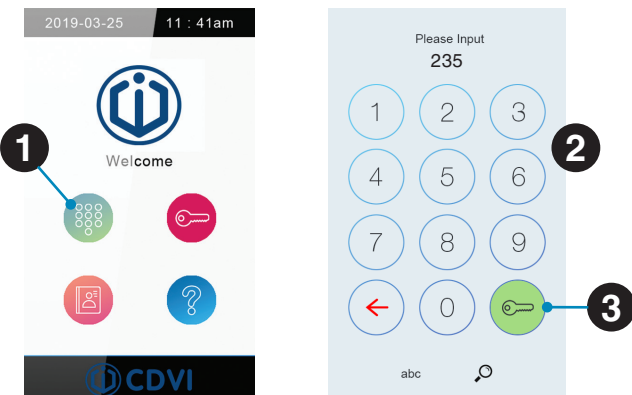
4

MAIN MENU



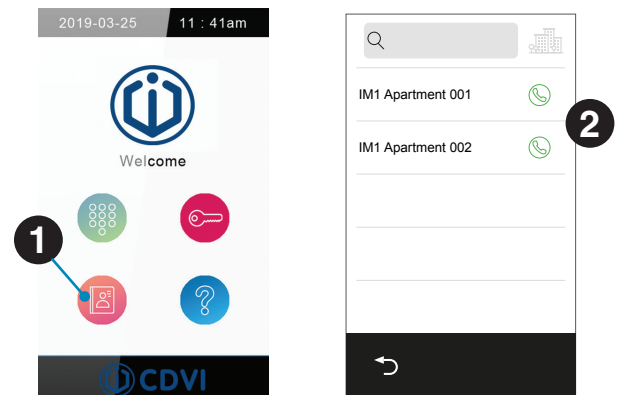
Calling a resident by room number:

1. Press “**Keypad**” button.
2. Type the room number.
3. Press the “**Key**” icon to call.



Calling a resident by listed name:

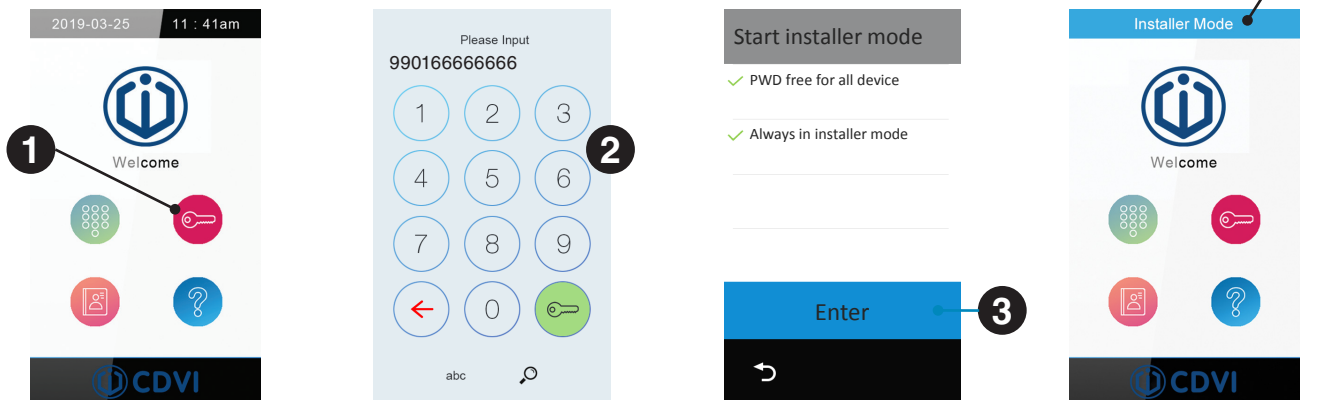
1. Press “**Name List**” button.
2. Tap the desired name from the list.



5

INSTALLER MODE

1. Tap on **“Unlock Key”** button.
2. Type 9901 + installer password (default: 66666666)
3. Tap on **“Enter”**.
4. The IP-MDS outdoor station is now in installer mode.

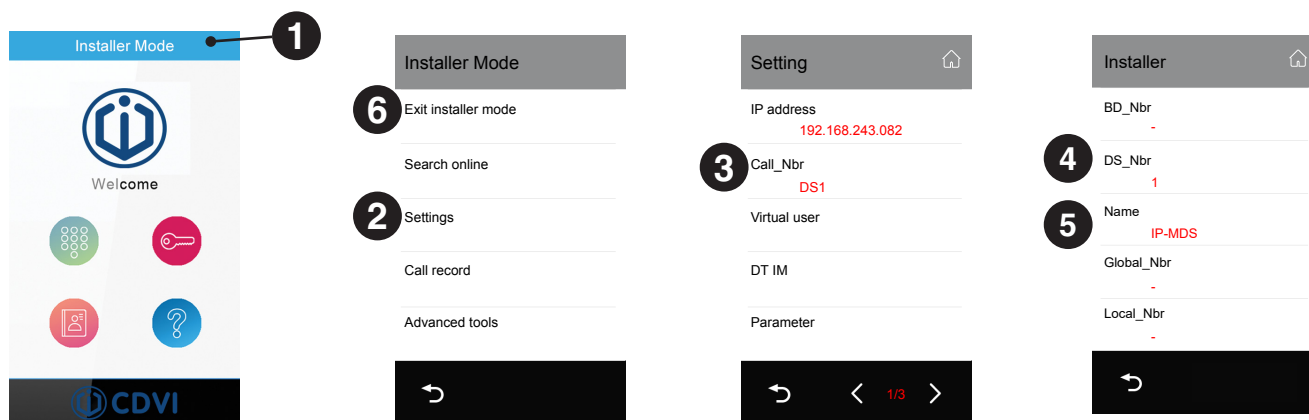


6

SETTING DOOR STATION ADDRESS & NAME

Once you are in **“Installer mode”**:

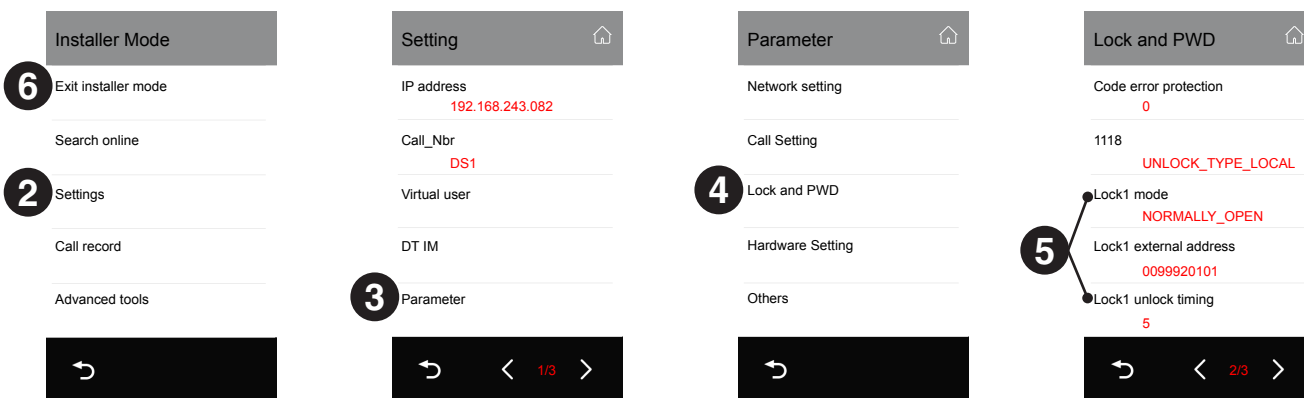
1. Tap on **“Installer Mode”** at the top of the screen.
2. Tap on **“Settings”**
3. Tap on **“Call_Nbr”**
4. Tap on **“DS_Nbr”** to fix the address (2 digits: 01 to 48) and click **“OK”** to save.
If more than one door station is used, each IP-MDS must have a unique address.
5. Tap on **“Name”** then enter your new and click **“OK”** to save.
6. Go back and **“Exit installer mode”**



7 LOCK OUTPUT SETTINGS

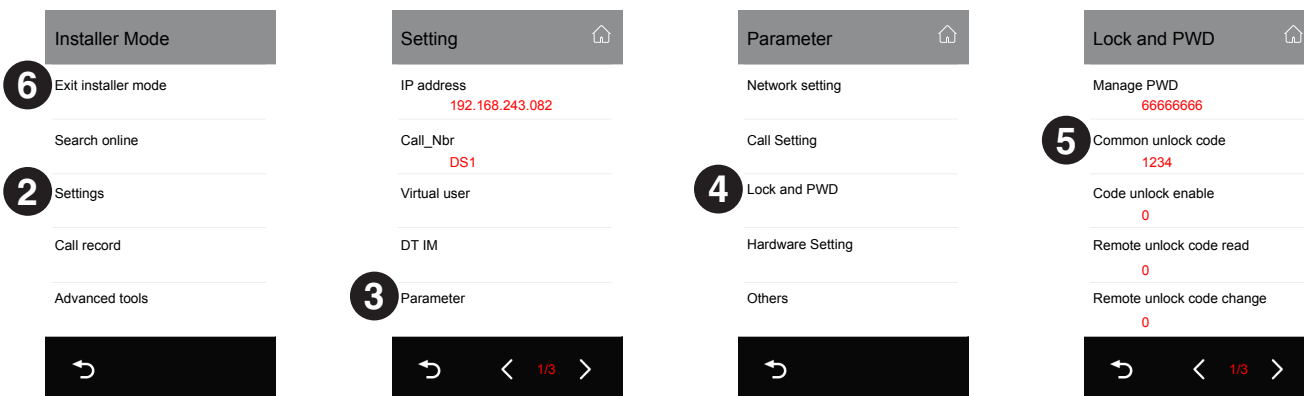
Once you are in **"Installer mode"** (see step 5), do the following:

1. Tap on **"Installer Mode"** at the top of the screen.
2. Tap on **"Settings"**
3. Tap on **"Parameter"**
4. Tap on **"Lock and PWD"**
5. On 2nd page to change of the lock output:
Lock1 mode: NORMALLY_OPEN or NORMALLY_CLOSE
Lock1 unlock timing: 0 to 99 seconds
 (Go on 3rd page for setting Lock2 mode)
6. Go back and **"Exit installer mode"**



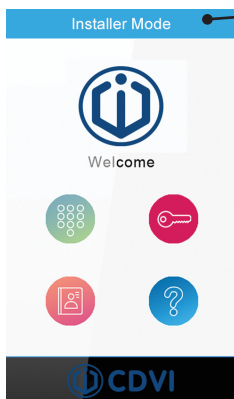
8 COMMON UNLOCK CODE SETTING

1. Once you are in **"Installer mode"** (see step 5), do the following:
 1. Tap on **"Installer Mode"** at the top of the screen.
 2. Tap on **"Settings"**
 3. Tap on **"Parameter"**
 4. Tap on **"Lock and PWD"**
 5. Tap on **"Common unlock code"** (default: 1234)
 Enter the new code (4 digits) and click **"OK"**
 6. Go back and **"Exit installer mode"**



9

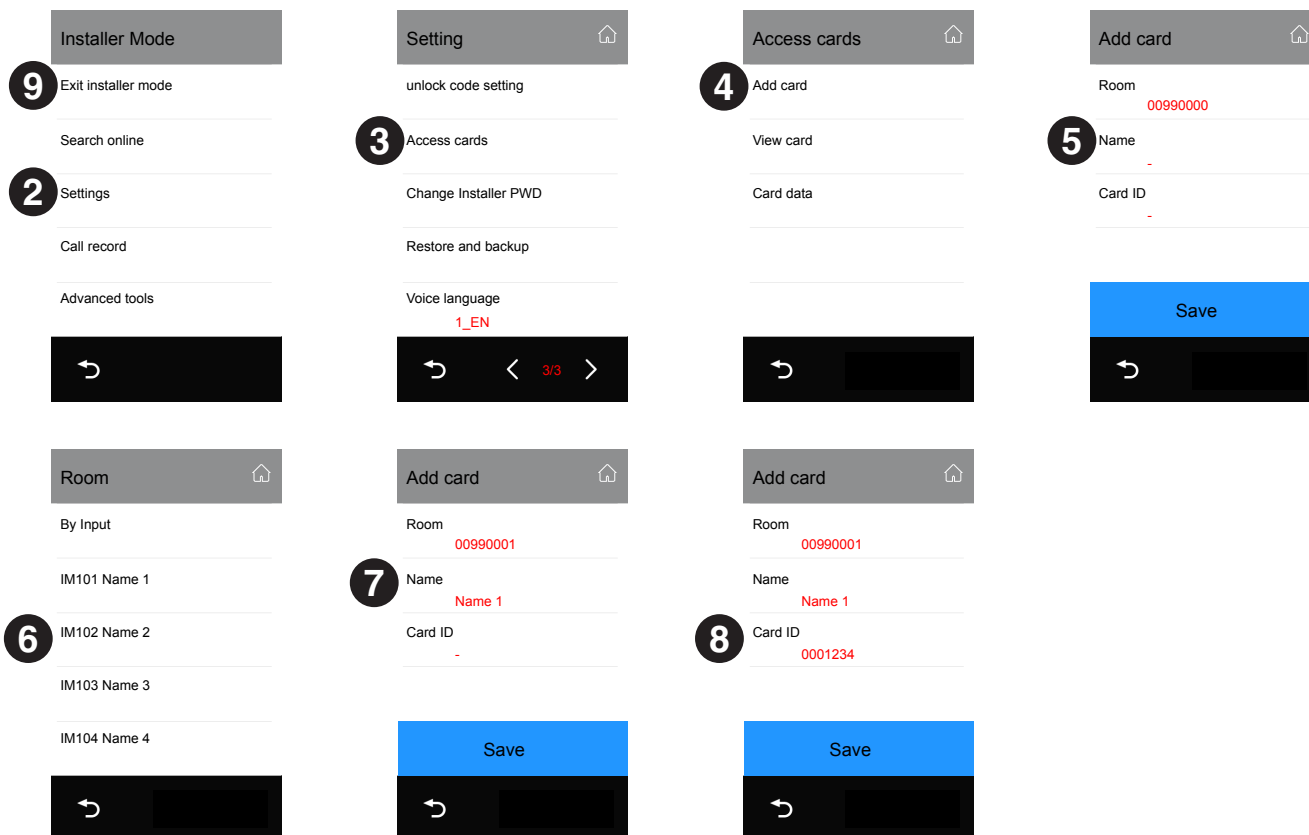
ADDING ACCESS CARD



The access card allows you to unlock the front door of a building. The IP-MDS or the IP-MDSF supports 125KHz and 13.56 MHz technology cards. You will be able to register one or more cards per apartment. See instructions below:

Once you are in **"Installer mode"** (see step 5), do the following:

1. Tap on **"Installer Mode"** at the top of the screen.
2. Tap on **"Settings"**
3. Navigate to page 3/3 (use the [< >] arrow to scroll pages) then tap on **"Access cards"**
4. Tap on **"Add card"**
5. Tap on **"Room"**
6. The room number and apartment name will appear automatically. Select an apartment from the list or type its room address (By Input, 4 digits) to which the card will be associated.
7. The room number and apartment name (from master room monitor) will be automatically fill.
8. Swipe the card to the reader. The card number will appear in the Card ID field automatically. Tap **"Save"** to register the card. Repeat for each card being issued for this apartment.
9. Go back and **"Exit installer mode"** when done.



10

CARD VIEW, DELETE, BACKUP & RESTORE

Once you are in **“Installer mode”** (see step 5), do the following:

1. Tap on **“Installer Mode”** at the top of the screen.
2. Tap on **“Settings”**
3. Navigate to page 3/3 (use the [< >] arrow to scroll pages) then tap on **“Access cards”**
4. Tap on **“View card”**
5. Swipe a card at the door station reader to find it in the list. Alternatively, you can search by room number, name, card number or date. Simply tap on one of these choices or leave blank to search through all cards. When ready, tap on **“Search”**.
6. The card information is displayed. Tap the delete icon located by the Card Info to delete only that card. To delete all the cards in the list, simply tap the delete icon (at the top-right) twice.

View card

Room
00990000

Name
-

Card ID
-

Data
-

5 Search

Card List

00990001 Apartment 1	0003652658 20220815	1
00990001 Apartment 1	00216542661 20220815	1
00990003 Apartment 3	002645655 20220426	1
00990005 Apartment 5	002656497 20220303	1
00990006 Apartment 6	002656497 20220303	1

1/2

Card info description:

Room_Addr Card Name
 00990001 Apartment 1
 0003652658 20190802
 Card ID Card Creation Date
 (YYYYMMDD)

Backup or restore cards

Once you are in **“Installer mode”** (see step 5), do the following:

1. Tap on **“Installer Mode”** at the top of the screen.
2. Tap on **“Settings”**
3. Navigate to page 3/3 (use the [< >] arrow to scroll pages) then tap on **“Access cards”**
4. Tap on **“Card data”**
5. Tap on one of the following to:

Access cards

Add card

View card

4 Card data

Card Data

Backup to SD

Restore from SD

5 Sync to device

Sync from device

Clear RES data

Backup to SD

Backup all card data to SD card (SD card not provided).

Restore from SD

Restore card data from SD card (SD card not provided).

Sync to device

Upload all card data from this door station to all other online door stations.

Sync from device

Download card data from another online door stations.

Clear Res data

Delete all cards data of this door station.

Scan the QR Code
for the full IP-MDS manual



or visit our website at: www.cdvi.ca
to download a copy of the manual.