



CDVI

Security to Access



IP-MDS

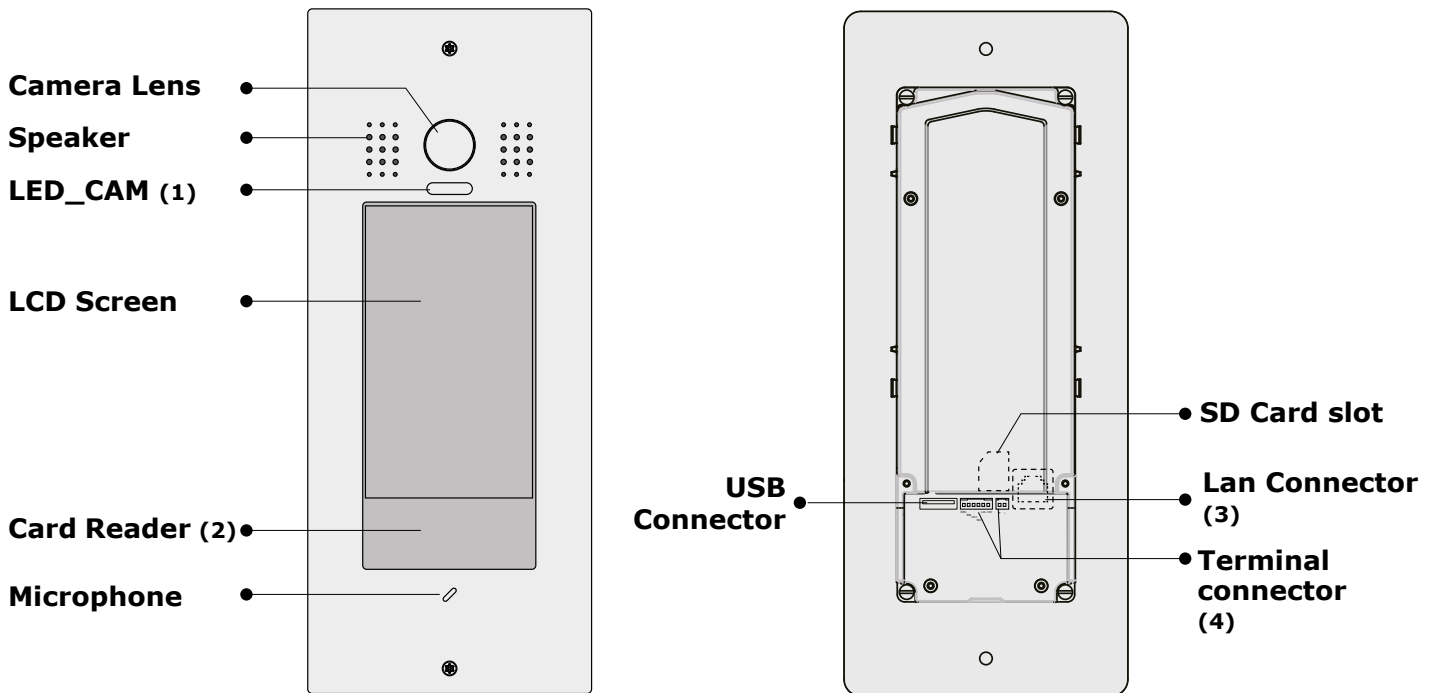
Multi-Door touch screen outdoor IP station



1] CONTENTS

Title	Page
2] Parts and Functions	3
3] Installation	3
4] Electric Lock Connections	5
5] System Wiring and Connections	6
6] Door Station Operations	6
7] Installer Mode	7
8] Unlock Settings	8
9] Management Settings Menu	9
10] Specifications	11
11] Precautions	11

2] PARTS AND FUNCTIONS

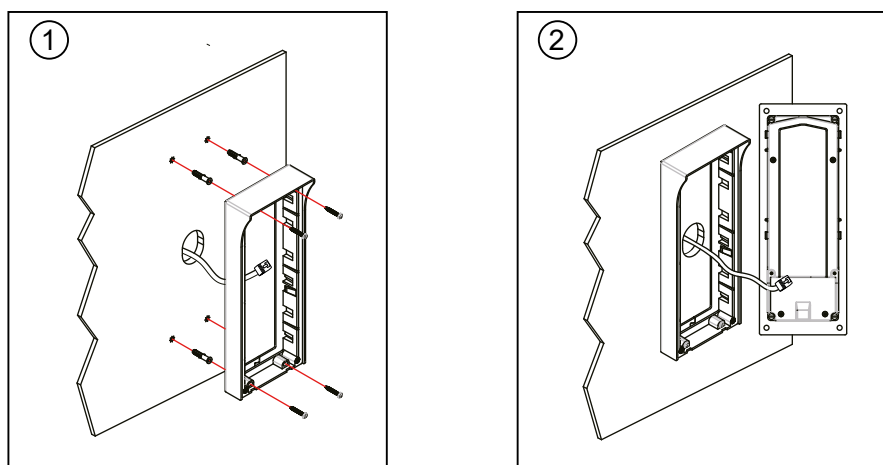


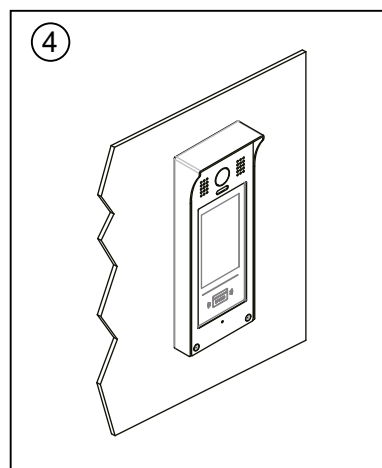
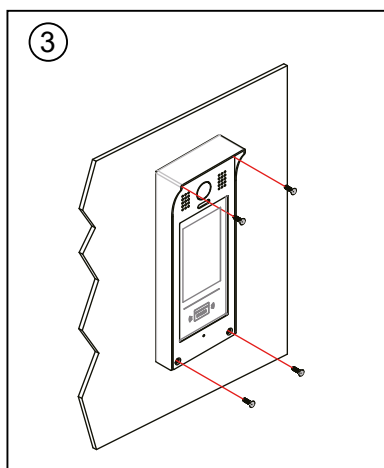
Notes:

- ① Indicates monitoring status
- ② The door station beeps if the card cannot unlock the door
- ③ Use to connect the door station to the network
- ④ Use to connect external devices to the door station

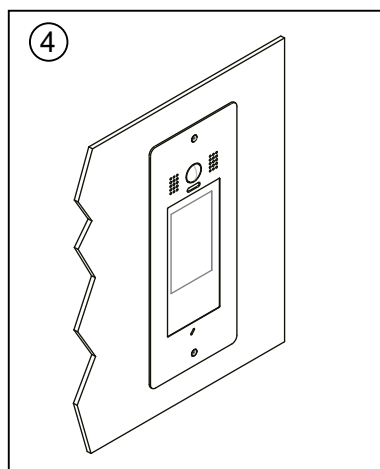
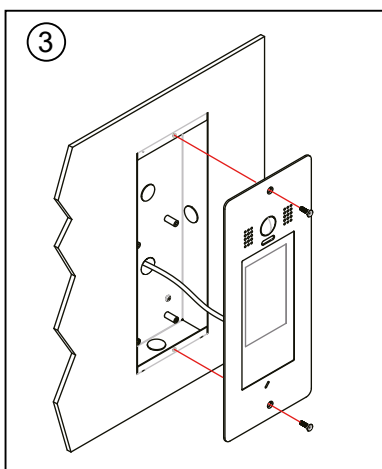
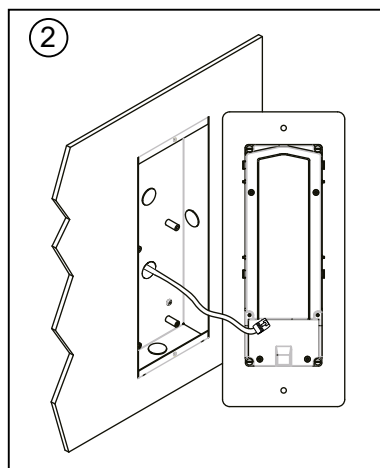
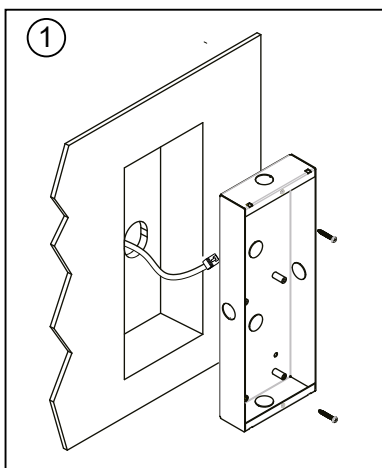
3] INSTALLATION

Surface installation





Flush installation



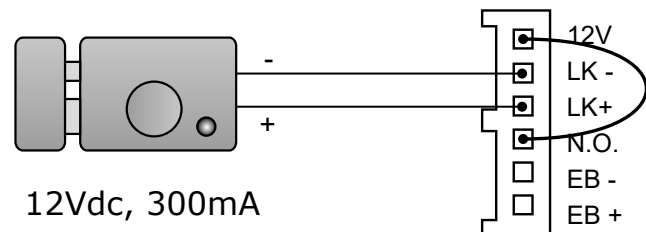
1. The recommended installation height for door stations is 145-160cm.
2. Use screws to fix the back panel to the wall after correctly connecting the cable.
3. Attach the front panel to the back panel, then use a screw to fix it.

4] ELECTRIC LOCK CONNECTIONS

Door lock controlled with internal power

Notes:

1. This mode only supports electromagnetic locks.
2. Fail safe electromagnetic locks (power off to unlock) should be used.
3. The door lock is limited to 12V, and holding current must be less than 250mA.
4. The monitor's **Unlock Mode** setting must be set to 1 (by default).



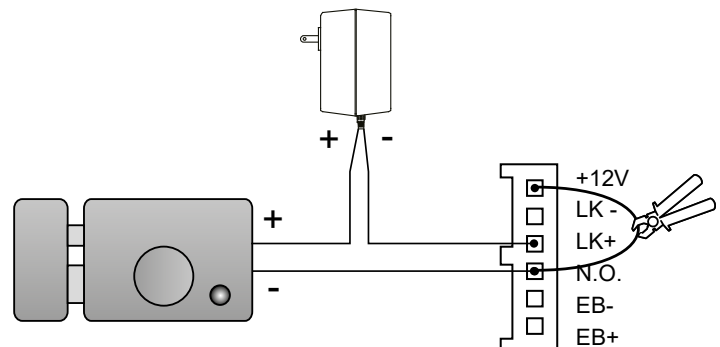
12Vdc, 300mA

Set to **Normally Open** on the Unlock Relay mode

Door lock controlled with dry contact

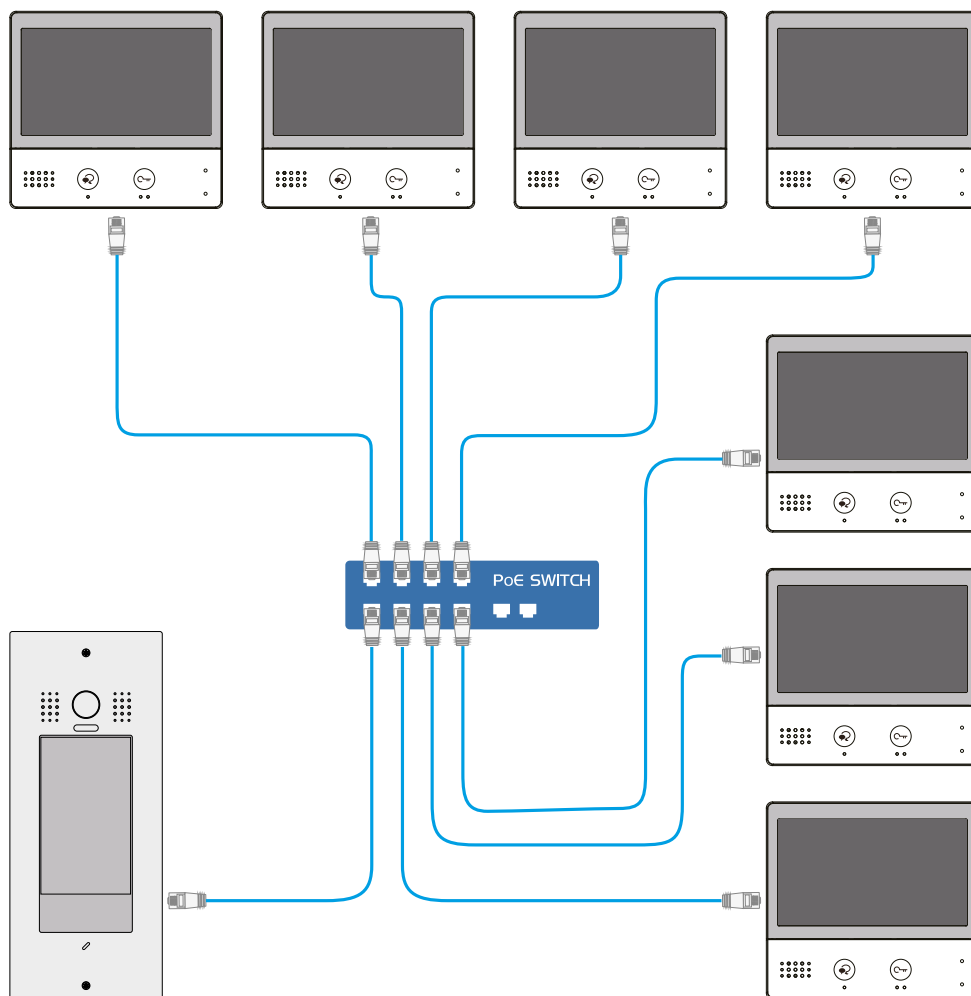
Notes:

1. The external power supply must be used according to the lock.
2. The internal relay contact is restricted to AC or DC 24V/1A.
3. Set the monitor's **Unlock Mode** for different types of lock.
 - **Fail Secure** (Power on to unlock):
Unlock Mode=0 (by default)
 - **Fail Safe** (Power off to unlock):
Unlock Mode=1



Set to **Normally Open** on the Unlock Relay mode

5] SYSTEM WIRING AND CONNECTIONS




6] DOOR STATION OPERATIONS


Main menu




Calling a resident via room number input

1. Press the keypad button to enter the keypad page.
2. Input the room numb
3. Press  to call.

Calling a resident via namelist

1. Press the namelist button to enter the namelist page.
2. Select the desired name from the list.
3. Press  to call.

Opening the door by entering password

1. Press the unlock button to enter the keypad page.
2. Input your unlock password.
3. Press  to open the door.

Opening the door by using an access card

Touch your access card to the card reader area of the door station.

7] INSTALLER MODE

1. Press the unlock button.
2. Input "990166666666" than confirm (9901+installer password 66666666 by default)

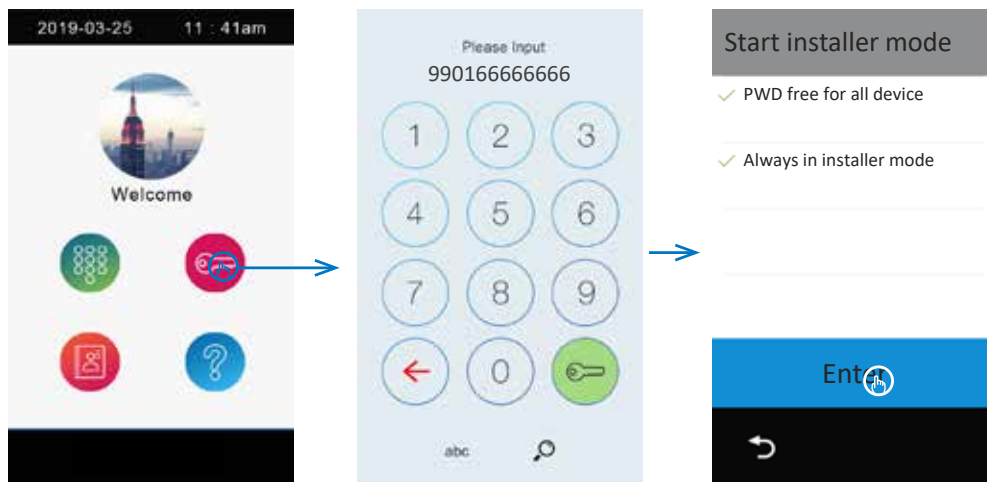
- **PWD free for all devices:**

All other devices with same installer password will not require you to input the password once installer mode is enabled.

- **Always in installer mode:**

This will keep the unit in **Installer Mode** unless you manually exit the mode or power down the unit. If this is not selected, the CDV-850IP will automatically exit Installer Mode after 1 hour.

3. Press **Enter** to set the door station to Installer Mode.



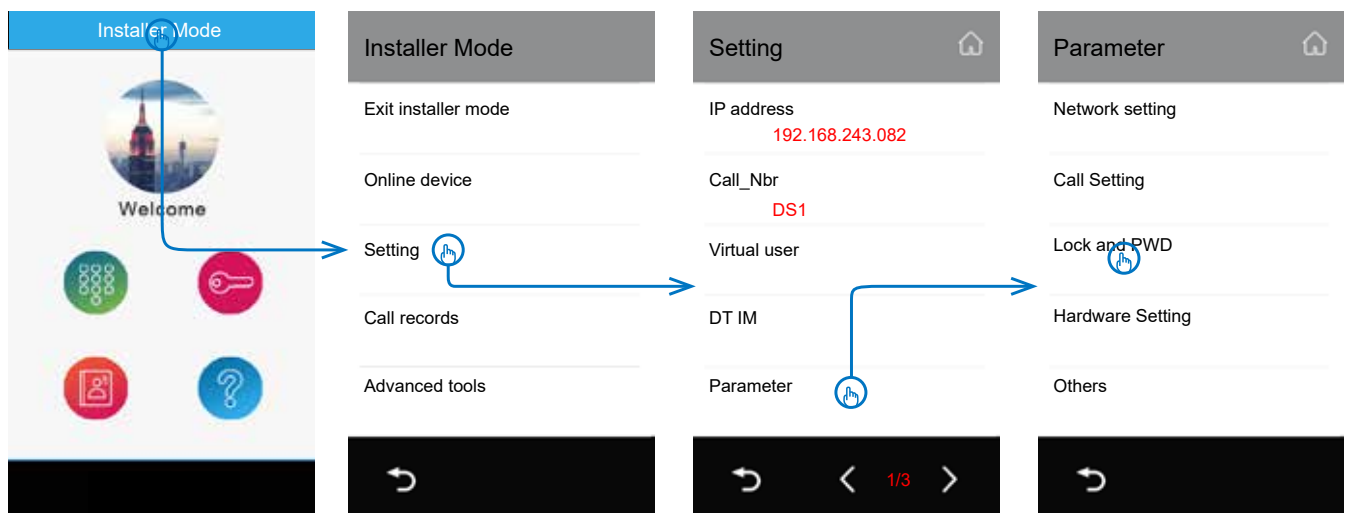
8] UNLOCK SETTINGS

In **Installer Mode** (Unlock with code 9901 and tap in the middle of the blue bar at the top):

1. Press **Setting**.
2. Select **Parameter**.
3. Select **Lock and PWD**.

Find the below parameters:

- **Lock1_mode**: Choose between **Normally Open** and **Normally Close**.
- **Lock1 unlock timing**: Setup unlock timing.



9] MANAGEMENT SETTINGS MENU

1. Press the unlock button.
2. Input "990288888888" than confirm (9902+installer password 88888888 by default)

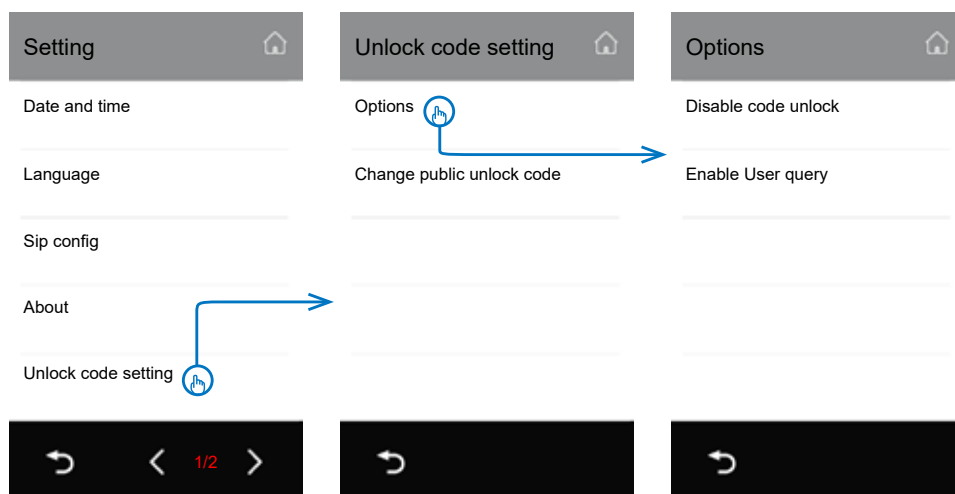
Public unlock mode

Change public code

1. In the **Management Setting Menu**.
2. Select **Unlock code setting**.
3. Select **Change public unlock code**.
4. Input the current code (1234 by default).
5. Input the new code twice.

Options

1. In **Unlock code setting**.
2. Select **Options**.



- Disable code unlock

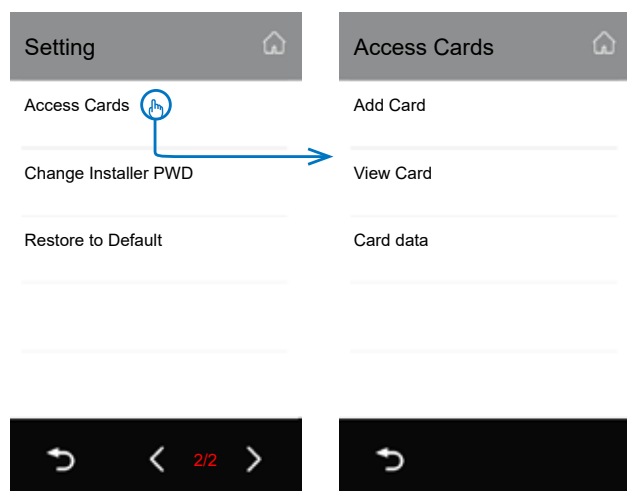
Does not allow users to input the code to unlock the door.

- Enable User query

Allows internal users to check the public unlock on monitor.

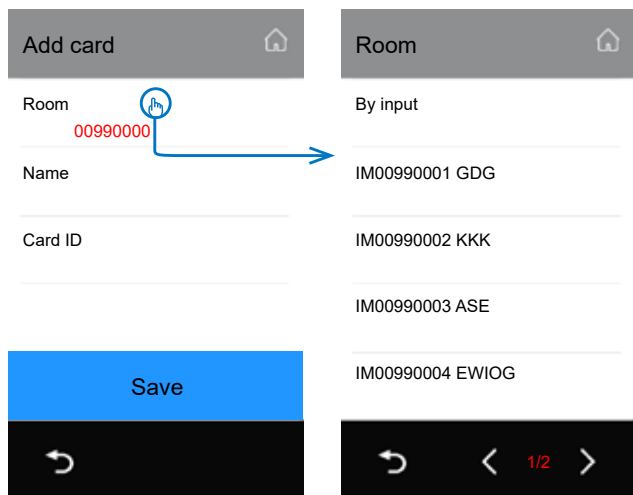
Access card management

1. In the **Management Setting Menu**.
2. Select **Access Cards**.



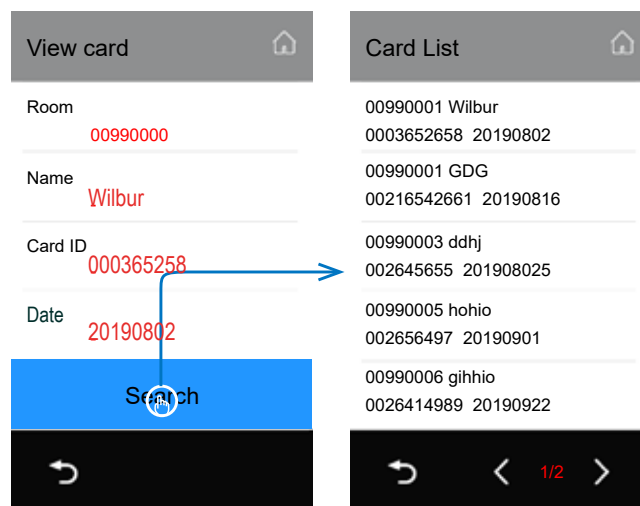
Add a card

Tap **add card** in **Access cards** to add a new access card.



View card

Tap **View Card** in **Access Card** to check added cards.



Room	Name	Card ID	Date
00990001	Wilbur	000365258	20190802
0003652658			20190802
00990001	GDG		
00216542661			20190816
00990003	ddhj		
002645655			201908025
00990005	hohio		
002656497			20190901
00990006	gihhio		
0026414989			20190922

- **Room:** Select an online monitor or manually input **Room_Addr**.
- **Name:** Manually input the card holder's name
- **Card ID:** Manually input the card ID or swipe the card in the card reader.
- **Save:** Present the card to the door station.

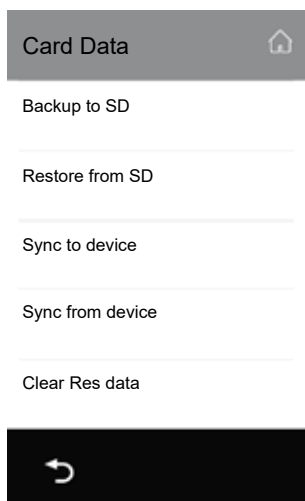
Input the search condition. If you keep all the fields blank, all the available cards will show.

- **Room:** Input the room number.
- **Name:** Input the card holder's name.
- **Card ID:** Input the 10-digit card ID.
- **Date:** Input card create date.

Alternatively, swipe a card to check it.

In the search list, tap the **delete** icon on icon to delete card, or tap the **delete** icon in the title bar to delete all cards in the list.

Card data



Tap **Card Data** in **Access Card** to sync, backup and restore card data.

- **Backup to SD:** Backup all card data to SD card.
- **Restore from SD:** Restore card data from SD card.
- **Sync to device:** Sync all card data to an online door station.
- **Sync from device:** Sync card data from an online door station.
- **Clear Res data:** Clear this door station's card data.

10] SPECIFICATIONS

Feature	Description
Power Source	PoE (IEEE 802.3af Class 0)
LAN Interface	10 BASE-T / 100 BASE-TX Ethernet (RJ-45)
Camera	Type 1/3.7" Ultra Sense, ISP with 77dB WDR
Len angle	170 degree with Fisheye correction
Screen	5" digital color TFT
Display Resolution	800x480
Minimum Illumination	5 lux
Wire Type	Cat-5e or Cat-6
Wiring Distance	100m (Approx. 330")
Operating Temperature	-10°C to 50°C
Protection	IP65
Dimension	Surface: 281(H)×110(W)×44(D)mm Flush: 316(H)×133(W)×46(D)mm

11] PRECAUTIONS

1. Clean with a soft cotton cloth. Do not use organic or chemical cleaning agents. If necessary, use a little pure water or diluted soapy water to clean the dust.
2. The unit is weather resistant. However, do not spray high pressure water directly onto the unit. Excessive moisture may cause problems with the unit.
3. Use the correct power adaptor supplied or approved by the manufacturer.
4. Pay attention to the high voltage inside the products. Please refer service only to a trained and qualified professional.



CDVI Group

FRANCE (Headquarters)

Phone: +33 (0) 1 48 91 01 02

.....

CDVI FRANCE + EXPORT

+33 (0) 1 48 91 01 02

www.cdvi.com

CDVI AMERICAS [CANADA - USA]

+1 (450) 682 7945

www.cdvi.ca

CDVI BENELUX [BELGIUM - NETHERLANDS - LUXEMBOURG]

+32 (0) 56 73 93 00

www.cdviBenelux.com

CDVI GERMANY

+49 (0) 175 2932 901

www.cdvi.de

CDVI TAIWAN

+886 (0) 42471 2188

www.cdviChina.cn

CDVI SUISSE

+41 (0) 21 882 18 41

www.cdvi.ch

CDVI CHINA

+86 (0) 10 84606132/82

www.cdviChina.cn

CDVI IBÉRICA [SPAIN - PORTUGAL]

+34 (0) 935 390 966

www.cdviIberica.com

CDVI ITALIA

+39 (0) 321 90 573

www.cdvi.it

CDVI MAROC

+212 (0) 5 22 48 09 40

www.cdvi.ma

CDVI SWEDEN [SWEDEN - DENMARK - NORWAY - FINLAND]

+46 (0) 31 760 19 30

www.cdvi.se

CDVI UK [UNITED KINGDOM - IRELAND]

+44 (0) 1628 531300

www.cdvi.co.uk

CDVI POLSKA

+48 (0) 12 659 23 44

www.cdvi.com.pl

All the information contained within this document (pictures, drawings, features, specifications and dimensions) could be perceptibly different and can be changed without prior notice. - Mar 2023