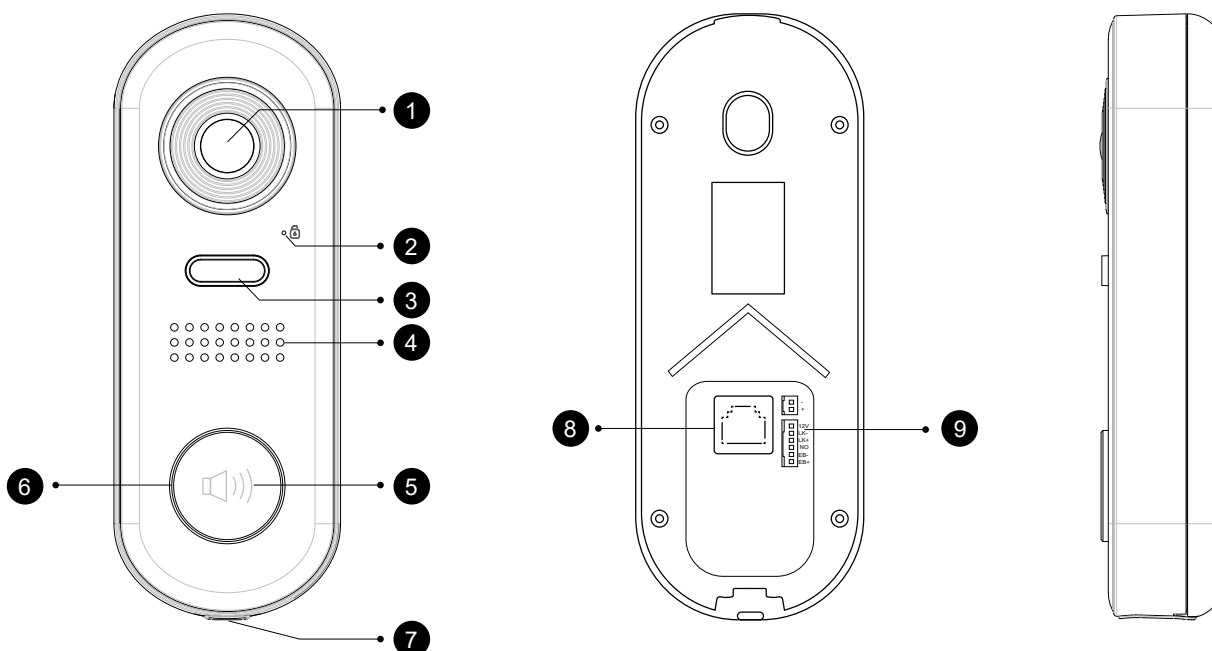


# 1 FUNCTIONS & CONNECTIONS



**1 Camera**  
Type 1/3.7" Ultra Sense, ISP with 77dB WDR  
Lens: 170 degrees with Fisheye correction, 5 lux

**2 LED Unlock Status**

**3 LED Lights**  
Illuminates subjects in dark environments.

**4 Speaker**

**5 Call Button**

**6 LED Key**  
Indicates monitoring, calling and unlock status.

**7 Microphone**

**8 LAN connector**  
Use to connect the door station to the network.

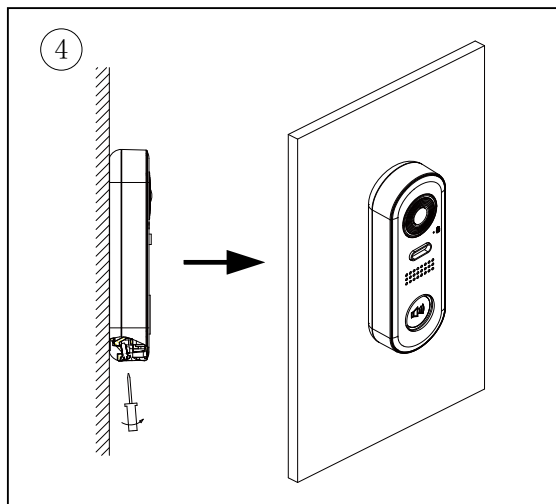
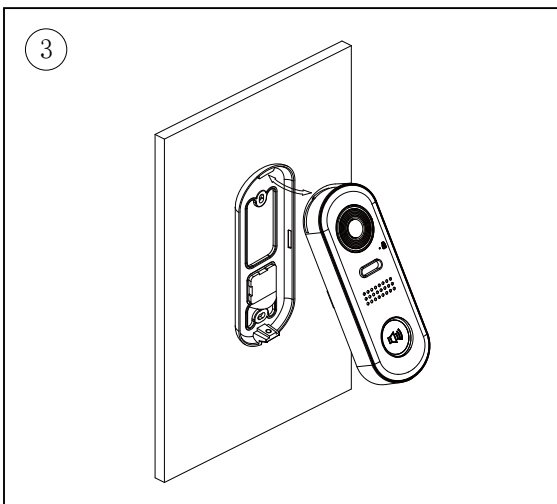
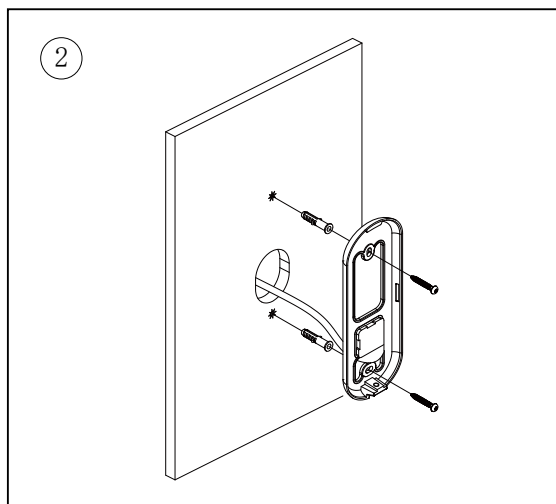
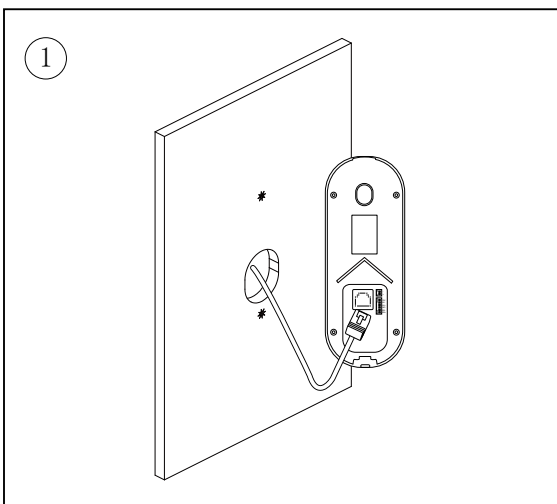
**9 Terminal connector**  
Used to connect external devices (lock).

**2****MOUNTING**

1. The ideal installation height is between 57 and 63 inches (145 and 160 cm).
2. After connecting the cable correctly, fix the back plate with screws.
3. Screw the front panel.

**Features:**

- Dimensions: 6.3 (H) x 2.36 (W) x 1.25 (D) in. (160 x 60 x 31.5 mm)
- Ingress protection: IP-65
- Operating temperature: 14 to 122 °F (-10 to +50 °C)



### 3

## LOCK CONNECTION


The IP-SDS can manage one lock.

### Configuring the lock output

Here are the different configurations depending on the lock type you used:

- "**Lock1 mode**" set to "**Normally Open**" for fail secure lock, power-on-to-unlock (default).
- "**Lock1 mode**" set to "**Normally Closed**" for fail safe lock, power-off-to-unlock.

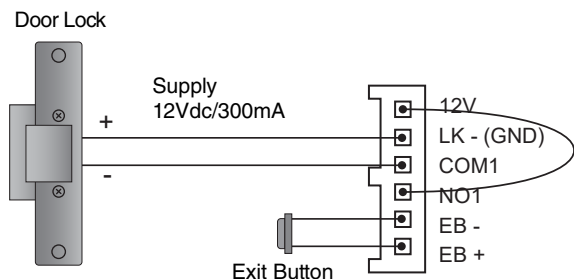
Changing the IP-SDS "**Lock1 mode**" from IP-MON/IP-MONSQ monitor:

1. Tap on "**Settings**" from the main menu.
2. Tap on "**Installer**" then tap on "**Onsite tools**"
3. Tap on "**Search**" icon , then tap "**Start search**"
4. Tap on the IP-SDS outdoor station from the list.
5. Tap on "Parameter" then tap on "Lock and PWD"
6. Go on 2<sup>nd</sup> page then tap on "**Lock1 mode**"
7. Tap on "**NORMALLY\_OPEN**" or "**NORMALLY\_CLOSED**"
8. Exit to confirm

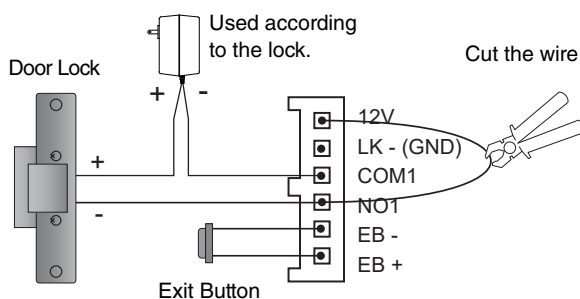
Changing the IP-SDS "**Lock1 mode**" from IP-MDS or IP-MDSF outdoor station:

1. Login as "**Installer**"
2. Tap on "**Search online**"
3. Tap on "**Search**"
4. Tap on the IP-SDS outdoor station from the list.
5. Tap on "Parameter" then tap on "Lock and PWD"
6. Go on 2<sup>nd</sup> page then tap on "**Lock1 mode**"
7. Tap on "**NORMALLY\_OPEN**" or "**NORMALLY\_CLOSED**"
8. Exit to confirm

### Wiring diagram using onboard power supply



### Wiring diagram using external power supply



Onboard relay rating:  
 1A 125Vac/3A 30Vdc

## 4 SETTINGS

Connect all the devices and power them on then:

### Option 1:

**Call button linked with IP-MON monitor in (VS) SINGLE FAMILY mode**

On the indoor monitor (IP-MON/IP-MONSQ):

1. From the main menu, tap the **Setting** icon.
2. Select **Ext.Unit**, then tap twice **Auto Setup Wizard**.

The door station will be renamed and the call button will be linked to this monitor.

### Option 2:

**Call button linked with IP-MON monitor in (SS) STANDALONE APARTMENT mode**

From the indoor monitor (IP-MON/IP-MONSQ):

1. From the main menu, tap the **Setting** icon.
2. Select **Ext.Unit**, and then tap **Enter OS binding**.

From the IP-SDS IP single door station:

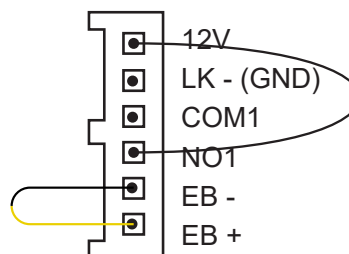
1. Press and hold the **Call Button** for 10s. **LED\_CAM** will flash twice.
2. Second flash indicates the link has been successful.

### Calling a resident

Press the **Call Button** to call.

### Factory Default

1. Power on the IP-SDS
2. Short circuit the exit button wires (EB+ & EB-). See diagram below
3. Press the call button for 15 seconds. **LED\_CAM** will flash 3 times.
4. Release the button, the device will start to reboot.



### Status check

Press and hold the **Call Button** for 5s. **LED\_CAM** will flash once.

	LED_LOCK	LED_KEY
SIP registered OK	Fast flashing	
SIP registered error	Normal flashing	
SIP disabled/Not connected	Off	
My Master IM found		Fast flashing
Other IP devices online, but Master offline		Normal flashing
No other IP device detected		Off