

Issue Date: 3/21/2013

Page: 1 of 2

File: PSS-K675J2

15/25kV	900A Deadbreak 2-Way Junction	K675J2
---------	-------------------------------	--------



Features:

- 15/25kV, 900 Amp Deadbreak 2-Way Junction
- Fully shielded, fully submersible molded rubber housing
- 100% peroxide-cured construction includes insulation and conductive EPDM materials
- Provides mating for Elastimold® 900 A Series Elbow connectors
- Stainless Steel Mounting Bracket

K675J2 Deadbreak 2-Way Junction

Applications:

ELASTIMOLD® junctions are designed for subsurface, vault or padmount applications and can be used for sectionalizing, looping, tapping, and equipment bypass. Junctions are designed to mate with other ELASTIMOLD® products including:

- K675 Elbow Connector
- K675BE Bushing Extender
- 675BEA3 Bushing Adapter

ELASTIMOLD® junctions are equipped with a stainless steel mounting bracket and back plate suitable for mounting on a flat surface.

Ratings:

Meets ANSI/IEEE Standard 386, Latest Revision

For 15kV Voltage Class:

8.3kV Max Phase-to-Ground – Operating Voltage
 14.4kV Max Phase-to-Phase
 95kV BIL – Impulse Withstand (1.2 x 50 microsecond wave)
 34kV AC – One minute withstand
 53kV DC – 15 minutes withstand
 11kV AC – Corona Extinction @ 3pC sensitivity
 900 Amp – Continuous
 25kA Sym – 10 Cycles Momentary

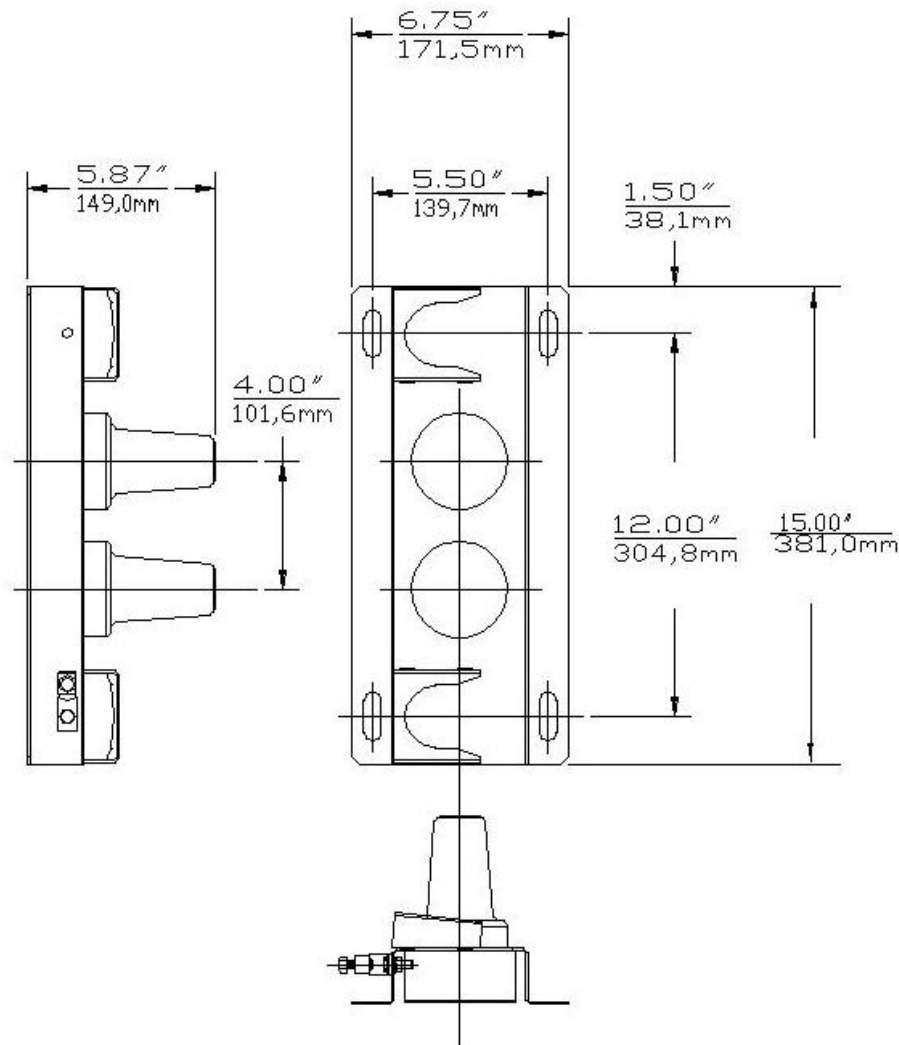
For 28kV Voltage Class:

16.2kV Max Phase-to-Ground – Operating Voltage
 28kV Max Phase-to-Phase
 140kV BIL – Impulse Withstand (1.2 x 50 microsecond wave)
 45kV AC – One minute withstand
 84kV DC – 15 minutes withstand
 21.5kV AC – Corona Extinction @ 3pC sensitivity
 900 Amp – Continuous
 25kA Sym – 10 Cycles Momentary

15/25kV

900A Deadbreak 2-Way Junction

K675J2



Ordering Instructions:

Each kit contains the following:

- | | | |
|---|--------------------------|-----------|
| 1 | Basic molded junction | K675J2 |
| 1 | Mounting Hardware | 600J2-6 |
| 2 | Tube, lubricant | 82-08 |
| 1 | Installation instruction | IS-0207 |
| 2 | Protective Cap | 675PPC-01 |

Specify **K675J2** for 15/25kV, 900 Amp, 2-way Deadbreak Junction.

Add "-5" at the end of the catalog number for Junctions with "U" style mounting straps only.

Add "-6" at the end of the catalog number for mounting bracket and back plate only.