

EPIC® H-B 16 AD-LB

Housing design H-B. The industry standard.

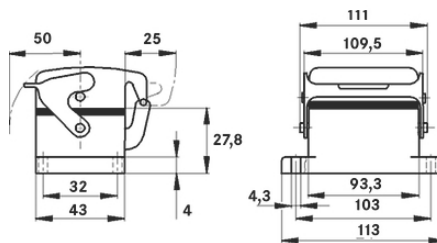
The robust metal housing for investment construction contains a seal, a metal cap and a single lever.

Info

Metal lid with sturdy hinge

Single Lever version for quick locking and simple unlocking with lifting aid

Protection rating UL50E tested



Waterproof



Robust



Mechanical resistance



Industrial machinery and plant engineering



Automation & fältinstallation

Benefits

The housing standard. Wide choice for all applications

Application range

Plant engineering

Light & sound technology

Plastics industry

EPIC® H-B 16 AD-LB

Product features

Panel-mount base
Single lever
Metal cover
Included: flat gasket

Technical Data

Classification:	ETIM 5.0 Class-ID: EC000437 ETIM 5.0 Class-Description: Housing for industrial connectors
Material:	Housing: powder-coated aluminium alloy, grey Lever: zinc-plated steel Sealing: NBR
Protection rating:	IP 65 (latched) UL50 Type 12 (latched)
VDE-tested:	Certified production control: VDE-REG. no.: B437 UL-tested: UL File Number: E75770
Temperature range:	-40°C to +100°C, short-term up to +125°C

Note

Photographs are not to scale and do not represent detailed images of the respective products.

* Prices are net prices without VAT and surcharges. Sale to business customers.



EPIC® H-B 16 AD-LB

Article number	Article description	B	B3	B5	d	H	H1	L	L1	L2	L3	L4	s
H-B housing: panel-mount base (cover, single lever)													
10073900	H-B 16 AD-LB	43	32	25	4.3	27.8	4	93.3	111	109.5	103	113	50

Last Update (31.12.2016)

©2016 Lapp Group - Technical changes reserved

Product Management www.lappkabel.de

You can find the current technical data in the corresponding data sheet.

PN 0456 / 02_03.16