

## EPIC® H-BE 6 screw connection

The tried-and-tested standard inserts for easy assembly

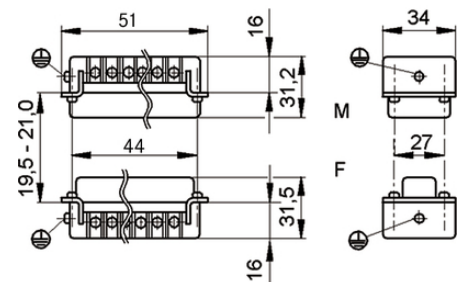
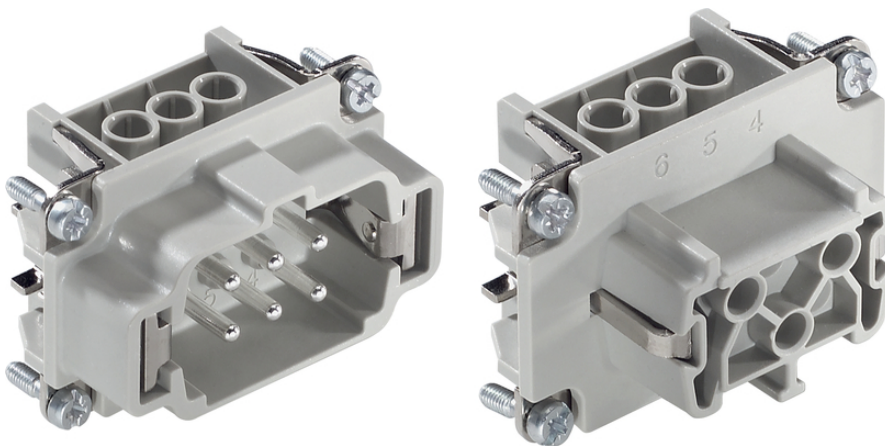
The multi-functional insert can be used for a broad range of applications, from mechanical engineering and the plastics industry through to lighting and sound systems.

### Info

Tried-and-tested screw connection for easy installation

Screw, crimp, cage clamp and Push-In version - freely combinable

For railway applications



Temperature-resistant



Robust



Rail



Industrial machinery and plant engineering



Automation & fältinstallation



## EPIC® H-BE 6 screw connection

### Benefits

The standard inserts with screw, crimp cage clamp and push-in connection

The tried-and-tested EPIC® H-BE series is suitable for applications that require a reliable connection when working with high voltages and currents.

Railway applications

- Fire protection on railway vehicles: Test according to EN 45545-2. Requirement set R22 and R23. Hazard level HL1, HL2 and HL3.

UL-tested for applications in control cabinets according to UL 508 / UL 2237

### Application range

Mechanical engineering

Plastics industry

Event equipment

Railway applications / vehicle construction

### Technical Data

Classification:	ETIM 5.0 Class-ID: EC000438 ETIM 5.0 Class-Description: Contact insert for industrial connectors
Rated voltage (V):	IEC: 500 VUL: 600 VCSA: 600 V
Rated impulse voltage:	6 kV
Rated current in A:	IEC: 16 A UL: 16 A CSA: 16 A
Pollution degree:	3
Flammability:	UL94 V-0
Contact resistance:	< 2 mOhm
Contacts:	Copper alloy, hard silver-plated
Number of contacts:	6 + PE
Cable connection:	Screw connection: 0.5 – 2.5 mm <sup>2</sup>
Stripping length (mm):	8
Material:	PC polycarbonate
Plug cycles:	500
Temperature range:	-40°C to +100°C, short-term up to +125°C

### Note

Photographs are not to scale and do not represent detailed images of the respective products.

Prices are net prices without VAT and surcharges. Sale to business customers only.



## EPIC® H-BE 6 screw connection

Article number	Article description	Contact type	Wire protection	Number of working contacts
H-BE 6 screw connection				
10190000	EPIC® H-BE 6 SS	male	yes	1 - 6
10191000	EPIC® H-BE 6 BS	female	yes	1 - 6
10190100	EPIC® H-BE 6 SS	male	1 - 6	
10191100	EPIC® H-BE 6 BS	female	1 - 6	

Last Update (31.05.2017)

©2017 Lapp Group - Technical changes reserved

Product Management [www.lappkabel.de](http://www.lappkabel.de)

You can find the current technical data in the corresponding data sheet.

PN 0456 / 02\_03.16