

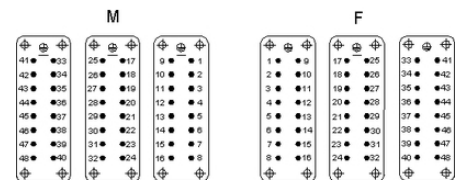
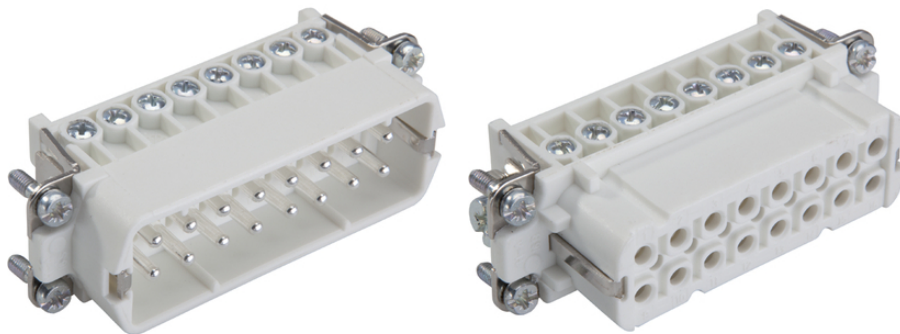
## EPIC® H-A 48

H-A inserts with screw connection up to 2.5 mm<sup>2</sup> connection cross section

The narrow standard insert can be used universally for conducting current and voltage. It can be used for machine or device manufacturing.

### Info

Slim standard insert, easy to connect by screw  
Universal for current and voltage transmission



Space requirement



Assembly time



Industrial machinery and plant engineering

### Benefits

Slim connector insert for standard application  
Easy to service screw connection  
Universal for current and voltage transmission

### Application range

Machine and equipment manufacturing  
Control engineering

## EPIC® H-A 48

### Technical Data

Classification:	ETIM 5.0 Class-ID: EC000438 ETIM 5.0 Class-Description: Contact insert for industrial connectors
Rated voltage (V):	IEC: 250 V UL: 600 V CSA: 600 V
Rated impulse voltage:	4 kV
Rated current in A:	IEC: 16 A UL: 14 A CSA: 16 A
Pollution degree:	3
Contact resistance:	1.5 – 4 mOhm
Contacts:	Copper alloy, hard silver-plated
Number of contacts:	16 + PE
Cable connection:	Screw connection: 0.5 - 2.5 mm <sup>2</sup> (2.5 mm <sup>2</sup> with conductor end sleeves depending on the crimping profile)
Stripping length (mm):	8
Plug cycles:	100
Temperature range:	-40°C to +100°C, short-term up to +125°C

### Note

Photographs are not to scale and do not represent detailed images of the respective products.  
Prices are net prices without VAT and surcharges. Sale to business customers only.



## EPIC® H-A 48

Article number	Article description	Contact type	Wire protection	Number of working contacts
H-A 48 screw connection				
10540100	H-A 16 SS	male	yes	33 - 48
10541100	H-A 16 BS	female	yes	33 - 48
10542100	H-A 16 SS	male	33 - 48	
10543100	H-A 16 BS	female	33 - 48	

Last Update (18.05.2017)

©2017 Lapp Group - Technical changes reserved

Product Management [www.lappkabel.de](http://www.lappkabel.de)

You can find the current technical data in the corresponding data sheet.

PN 0456 / 02\_03.16