



Product Category Overview Guide

Jobsite Power, Jobsite Lighting, Portable Power & Pendant Power & Control



Jobsite Power

PTU

Power Transformation Units

15kVA - 300kVA, Single & 3-Phase, 480-600V

- NEMA 3R, 4X and Hazardous Location
- 15-300kVA, 3-phase
- 2 & 4 wheel transformer carts
- Primary Switch, primary and Secondary Panels and Transformer
- Infinitely Customizable



1066FS

Power Distribution Unit

50-Amp

- UL943-5th Edition, Self-Testing GFCI Receptacles
- UL1640 - Design, Assembly &
- Open Neutral Protection
- Straight, Locking, IEC & CAM Configurations
- Stainless Steel Enclosure Option
- Custom Paint & Labeling Options Available



CDU30A & CDU50

Compact Distribution Units

30 - 50-Amp

- UL943-5th Edition, Self-Testing GFCI Receptacles
- UL1640 - Design, Assembly & Open Neutral Protection
- Patented Steel Compact Enclosure
- Straight and Locking Configurations
- Custom Paint & Labeling Options Available
- Stackable Design



Nonmetallic PDC

Power Distribution Units

50 - 200-Amp

- UL943-5th Edition, Self-Testing GFCI Receptacles
- UL1640 - Design and Assembly
- Straight, Locking, IEC & CAM Configurations
- Indoor & Weatherproof Outdoor Designs
- Stackable Designs

Nonmetallic CDU

Compact Distribution Units

20 - 30-Amp

- UL943-5th Edition, Self-Testing GFCI Receptacles
- Straight and Locking Configurations
- Deluxe Wire Mesh Strain Relief Cord Protection
- Indoor & Weatherproof Outdoor Designs



EXPERIENCE. INNOVATION. EXPERTISE.

142100/143100

Commercial Grade String Lights

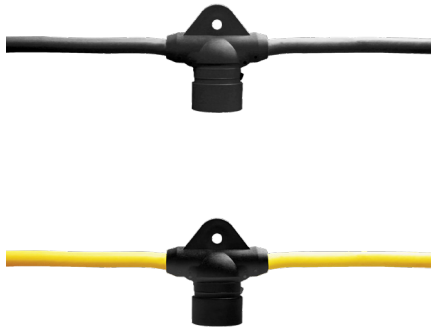
- UL listed and CSA certified
- Full threaded screw shell to ensure proper contact
- Designed for applications that require rapid set-up and tear down
- String lights available in 50ft. and 100ft.
- String lights, standard with watertight NEMA Plug and connector
- Guards sold separately
- Product customizations are available upon request



123100

Commercial & Industrial Grade String Lights

- cULus listed
- Meets OSHA construction site requirements
- Meets NEC/CEC Requirements
- Designed for rapid set-up and tear-down
- Full threaded screw-shell to ensure proper contact
- Non-conductive, snap-open lamp guard
- Built-In hanger for messenger cable and hooks
- Indoor and Outdoor Use
- Power drops available



1006-LED Baylight 100 & 150 Watt

Commercial Grade Bay Lighting

- cETLus listed to UL153, CSA C22.2 No. 250.4
- IP64 damp location, under roof rated
- Aluminum heat sink for heat dissipation.
- Isolated constant current power supply. 6000V surge protection
- Stainless steel guard for impact protection
- 12,000 Lumens (100W), 18,000 Lumens (150W) 120 LPW
- Color temperature 5000K
- Adjustable stand, to 72", available



1006-ST Stand



1004-LED-150

Commercial Grade High-Bay Lighting

- UL listed
- Product DLC listed
- 150-Watt, 100-277 VAC, 50/60 Hz
- 19,500 Lumen Output, 130LPW
- Wet location rated, IP65
- Energy efficient LED technology
- Reduced eye stress
- Cool, glare-free lighting
- Low power utilization/ consumption



Jobsite Lighting



Industrial Grade Jobsite Lighting Solutions

1140/1239

Industrial Grade Linear

- cETLus listed for USA and Canada.
- Lightweight, heavy duty impact resistant housing.
- Designed for cable egress to prevent cable pinching when unit is storage or used in a vertical orientation
- Select units contain a emergency driver and back-up battery
- Emergency Driver is rated at 10W and provides 2300 lumens for 90 minutes
- Cool white and glare free LED for reduced eye stress
- High efficient LED driver for low power consumption



1000, 1001 Series

Industrial Grade Magnetic Mount Canopy

- cULus listed for U.S. and Canada
- Outdoor and wet location rated
- Strong integral mounting magnet
- LED efficient lighting technology
- 50,000-hour lamp life expectancy
- Standard models wired with NEMA 5-15 plugs
- Optional feed-thru with cable and connector or weather-proof receptacle and cover
- Low temperature start at -30°C
- 5000K Color Temp
- Product customizations are available upon request



WL

Industrial Grade Hand Lamps

- High impact, shatter-proof tube with replaceable frosted tube shield
- Beam angle available in 200° and 360°
- Bi-directional version offers glare protection to prevent eye strain
- Wired with 15A, 125V, water-tight plug & feed-thru water-tight connector
- Driver range of 100-277 volts at 50/60 Hz
- Environmental rating: Suitable for outdoor use in wet locations



BL500

Industrial Grade Magnetic Mount Canopy

- Extra Bright, 500-w Tungsten Lamp
- 120V, 8800 Lumens
- N5-15 Industrial Water-tight Plug with 5' SOW Cord
- Designed to fit through Boiler Inspection opening – 1.8" diameter
- Curved handle version for directing light where you need it
- Grounded Handle
- Magnetic Mount for Stability
- Welded Steel Cage to Protect Lamp
- Replacement Parts Available





HL Series

Industrial Grade Hand Lamps

- High impact, shatter-proof tube with replaceable frosted tube shield
- Beam angle available in 200° and 360°
- Wired with 15A, 125V, watertight plug
- Driver range of 100-277 volts at 50/60 Hz
- Environmental rating: Suitable for outdoor use in wet locations

7 & 9 Series

Industrial Grade Hand Lamps

- cETLus listed for U.S. and Canada
- 120 and 12-Volt options
- Use with a variety of LED, CFL or Incandescent Lamp
- Molded flexible rubber handle impervious to impact and resistant to work site chemicals
- Optional switch is available
- Attached and Molded Heavy Duty N5-15 Plug (9-series)
- Accommodates cord sizes up to 14/3 SOW
- Product customizations are available upon request
- Wide selection of pre-wired hand lamps and replacement parts



70N

Industrial Grade Hand Lamps

- cETLus listed for U.S. and Canada
- Provided with High Lumen Output 16W LED Lamp
- Molded handle impervious to impact and resistant to jobsite chemicals
- Glass globe is heat and impact resistant. Seals into handle with threads
- Guard is constructed with heavy-gauge, corrosion resistant steel wire.
- Quick latch wire guard for easy bulb changes
- Pre-wired model, 16/3 SOW cord and watertight molded plug

1917, 1918 & 1924

Industrial Grade Hand Lamps

- Lightweight, Impact-Resistant Nylon Housing.
- Impact-Resistant, High-Temperature Lens.
- Large rubberized cushion.
- Ergonomic Handle
- Outdoor/Wet Location rated.
- Heavy duty SOOW cord.
- Designed for confined space applications.
- Cool, glare free lighting available in spot and flood distributions
- Rubberized, sealed in-line transformer assembly, converts 120V to 12VAC.





Jobsite Lighting

Harsh and Hazardous Lighting Solutions

SL

Series Stringlight

- NEMA 3R (IP24), 4X (IP56), 6P (IP67)
- US and Canadian approvals.
- Efficient LED technology.
- 11 & 22" Impact resistant protective LED tube.
- 200 and 360-Degree beam spread.
- 110-277v Driver available.
- Available in 50 & 100' lengths.
- Total lumen outputs from 5,400 – 28,000 lumens.
- Custom cord, light output, labeling & CCT available.



SL HAZ

Series Stringlight

- Class 1, Div 2, 4X, 6P (IP66/67) rating.
- Class 2, Div 1.
- US and Canadian approvals.
- Protective copper free aluminum shell.
- Chemical and impact resistant Borosilicate Glass Lens.
- 360-Degree, 1550 Lumen output per module.
- 120- Volt driver.
- Custom cord, light output, CCT, module spacing, and labeling available.

2600

Series Stringlight

- Class 1, Div 2, 4X, 6P (IP66/67) rating.
- Class 2, Div 1.
- US and Canadian approvals.
- Protective copper free aluminum shell.
- Chemical and impact resistant Borosilicate Glass Lens.
- 360-Degree, 1550 Lumen output per module.
- 120- Volt driver.
- Custom cord, light output, CCT, module spacing, and labeling available.



2600

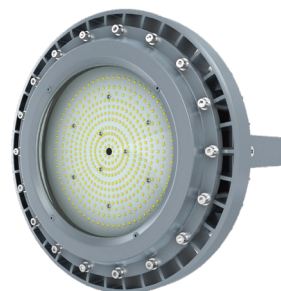
Series Handlamp

- Class 1, Div 1, NEMA 4X, & wet location rated.
- Class 2, Div 1.
- US and Canadian approvals.
- Chemical and impact resistant handle assemblies.
- Rugged heat resistant (300F°), protective copper free cast aluminum shell with Borosilicate Glass.
- 360- Degree enclosed rated LED lamp.
- Custom cord, light output, labeling and CCT available.

1007

Explosion Proof Baylight

- cETLus listed for U.S. and Canada.
- Class 1, Div 1 & 2.
- Class 2, Div 1 & 2.
- Class III.
- Nema 4X, IP66.
- T4 Temperature rating.
- Marine and wet location rated.
- High efficient LED, 140 lu/w surface and pendant mount.
- Copper free aluminum ambient temperature range - -40C – 60C.



PERMA-LINK®

- UL & CSA Industrial Grade Straight & Locking Devices designed for application where high impact, and worksite chemicals are present
- Ambient temperatures exceed other plastics, -20C – 100C
- Internal Cord Seal prevents moisture, dust and contaminants from entering the wiring chamber, causing failure
- “Floating” Cord Grip Design automatically adjusts to cord angles, preventing strain and pinching



PERMA-GRIP™

- UL & CSA Industrial Grade Straight & Locking Devices
- Designed for demanding indoor applications prone to high-impact, corrosion, oils, greases and worksite solvents and chemicals
- Ambient temperatures exceed other plastics, -20C – 100C
- Cord Grip design prevents moisture, dust and contaminants from entering the wiring chamber, causing failure
- 3-Screw Design assists in quick assembly



PERMA-TITE®

- UL & CSA Approvals
- NEMA 4, 4X, 6, 6P and IP69K
- Patented 8 Point Tongue & Groove Sealing System
- External Husk Molded from PBT for high resistance chemicals, moisture, and petroleum absorption
- Husk Grooves for secure non-slipping gloved grip
- Color Coded Sealing Bushings are designed with various sizes to ensure secure dust and water-tight seal
- Device Blades and Contact are Plated for better contact and service life
- Removable & Replaceable self-retained cap standard for Female Connector and Optional for Plug



PERMA-KLEEN

- UL & CSA, NSF Approvals
- External & Husk Molded for wider temperature range, higher crush, chemical resistance
- Inhibits growth of bacteria, molds, mildews and fungi
- Patented Antimicrobial additives offers over 99.98% protection for E.coli, Staph, MRS and Listeria
- Antimicrobial additive is effective for the life of the product
- Patented 8-Point seal offers exceptional performance for high pressure and heat washdown
- Device Housing Screws, Blades and Contact are Plated for better contact and service life
- Cord Grip Nut and Grommet System offer a range of cable sizes



Pin & Sleeve

- UL and CSA Approved IEC309-2 Pin & Sleeve Devices
- High-Impact Thermoplastic Housing with Internal Strain Relief
- Locking Ring Gasket to ensure water-tight seal
- Chamfered, Double Terminal Screws with Split Contact, Nickel plated steel springs on Connectors
- Designed for Harsh Industrial & Water-Tight applications – NEMA 4, 4X, IP65, 66, 67, & 68 (submersible) applications
- Ambient operating temperatures of -25C – 90C.



Industry Leading, Ericson Exclusive



Portable Power



Portable Power

GFCI Solutions, Smart Monitor & Factory Assembled Cordsets

XG2

Series Cordsets

- UL 943 5th Edition & CSA 22.2.1 self testing GFCI
- NEMA 4X & 6P – Watertight and Temporary Submersion
- Manual and Auto Reset Versions
- Available in 14 and 12ga, 15 & 20A
- Several Configurations – Tri-Tap, WP Box, Explosion Proof Plug & Connector



1075 Series

Panel Mount Options

- UL 943 5th Edition & CSA 22.2.1 self testing GFCI
- Outdoor and Splash Rated - Nema 4X Button on Face
- Available in Manual and Auto Reset
- Custom OEM Wiring Options Available

Smart Monitor Plugs and Connectors

Indoor and Outdoor

- Meets UL and OSHA Requirements for AEGC
- 7 Electrical & Continuity Tests Automatically
- Green and Red Pilot Lights Signal Receptacle and Cord Status
- Available in Indoor and Watertight Configurations



Factory Assembled Cordsets

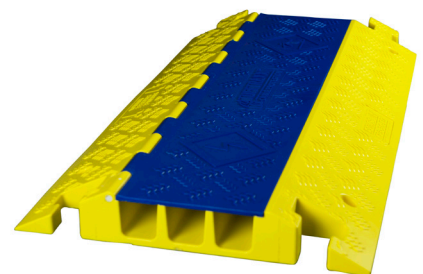
- UL and CSA Approved
- 125-600-Volt, 15-100-Amp Configurations
- Standard Versions in Perma-Link, Grip, Kleen & Tite
- Standard IEC and Cam-Lock Styles
- Custom Cord, Color, Length, NEMA, IEC, CAM, Explosion Proof Plug and Connectors



TUFFTRAXX™

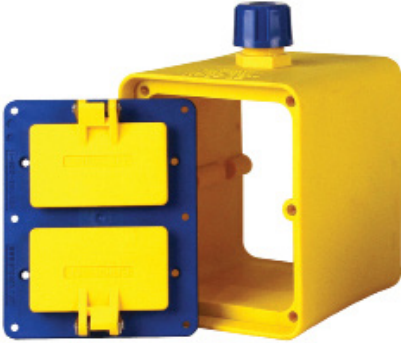
Cable & Hose Protection

- NEC / OSHA compliance
- Industry leading load ratings up to 50,000 lbs. per axle
- Industrial and Extreme duty options
- Constructed from lightweight polyurethane



6000 Series & Covers

- Rugged TPE Exterior offering Crush and Chemical Resistance
- Single Gang, Double Sided, Standard and Deep Depths
- Indoor and Outdoor Cord Clamps with Feed-Thru
- Available with and without popular cover plates
- Available in Standard & Custom Colors & Assemblies



8000 Series & Covers

- Rugged TPE Exterior offering Crush and Chemical Resistance
- Double Gang, Double Sided in Deep Depth Standard
- Indoor and Outdoor Cord Clamps with Feed-Thru
- Available with and without popular cover plates
- Available in Standard & Custom Colors & Assemblies

PWDX Series & Watertight Receptacle Options

- UL & CSA Approval
- Watertight, Impact, Chemical and Corrosion Resistant with Feed-Thru
- Watertight Duplex Straight & Locking Receptacle Configurations
- Pre-wired for quick installation
- FS Box Dimensions with Standard & Deep Options



FS Series & Watertight Receptacle Options

- UL943-5th Edition, Self-Testing GFCI Receptacles
- UL1640 - Design and Assembly
- Straight, Locking, IEC & CAM Configurations
- Indoor & Weatherproof Outdoor Designs
- Stackable Designs

Assembled Cord Drops

- 6000, 6200 and 8000, PWDX and Series with Standard & Custom Options
- Available with Wire Mesh Strain Relief
- Customized with Cable Type, Length Wire Mesh Support and Receptacle Options





Commercial & Industrial Cable Reels

3000 & 3100 Series

Commercial Grade Reels

- High Impact Corrosion Resistant Non-Metallic Housing (3000 series)
- Wall Mount, Swivel Mount Covers 180 Degree Work Area
- Available with Tri-Tap, NEMA 5-15 illuminated receptacle
- cULus Listed – (3100 series)
- Reinforced Steel Construction – available in various colors.
- Separate mounting base for easy installation
- 4-Roller Guide for positional pull, with adjustable ball-stop



4000-7000 Series

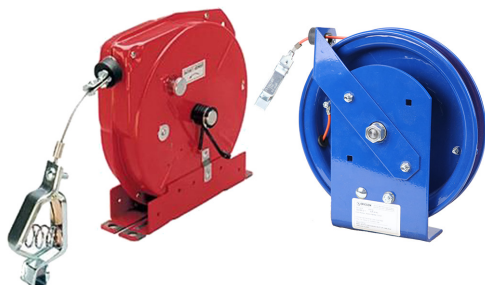
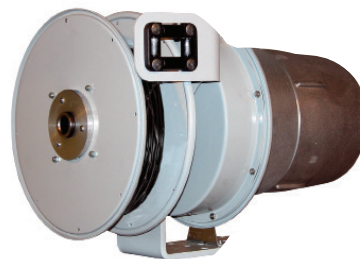
Industrial Cable Reels

- UL/CSA
- Weatherproof 4X Slipping rating
- Heavy Duty, All steel Construction
- Lift and Drag Application Approved
- Cord range – 16/3-12 conductor to 10/3-10/6, 8-30A – 600V
- Power and Control Application Approved
- 4-Roller Guide for positional pull, with adjustable ball-stop

8000 Series

Series Hazardous Location Cable Reels

- UL Approved Hazardous Location Reel
- Lift and Drag Application Approved
- Cord range – 16/3-14/4 – 35A - 600V
- Power and Control Application Approved
- 4-Roller Guide for positional pull, with adjustable ball-stop



SDR Series

Industrial Grade Static Discharge Reels

- 50-100' Cable (1/8" and 3/32" coated cable) Length with 100A Grounding Clamp
- .3 – 2.0 Ohm resistance
- Rugged All-Steel Construction with Epoxy Coated Enclosures
- Auto locking, for constant tension
- 4-Roller Guide for positional pull, with adjustable ball-stop (SDR-100)

Pulling

Wire Mesh

- Designed for a variety of cable & bundle diameters to 4"
- Complete Line of Junior, Short and Standard Lengths
- Cable/Bundle Range from .25" - 3.99"
- High Strength Single and Double Weave Galvanized Steel Strand



Supporting

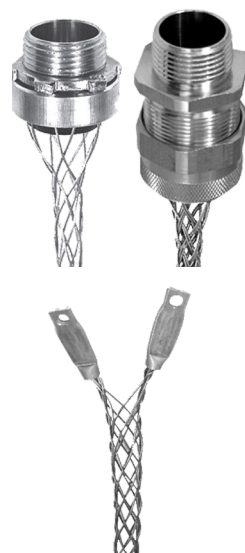
Wire Mesh

- Available in Universal Bale, Double Eye, Offset and Single Eye Styles
- Closed, Spilt Rod and Split Lace Versions to 3.99"
- Conduit Riser, Single Weave Closed and Split Mesh and Rod Closing to 6" Conduit
- Bus Drop Safety Springs Available

Indoor and Deluxe, Outdoor Versions

Wire Mesh

- Insulated and non-insulated versions to 3.25"
- Various Deluxe Mesh styles available in straight, 45 and 90-degree fittings
- I-Grips versions available in Galvanized and Nylon Coated Styles through 1.25" Cable Diameters



Cord Grips

Wire Mesh

- Aluminum Styles available for indoor and outdoor applications
- Available in Straight, 45 and 90-Degree through 3" NPT Diameters





Pendant Power & Control

Complete line of Crane Push Button Stations & Mini/Micro Control

5500 Series

Crane Push Button Station

- Available in Nema 1, 3, 4, 4X & 12, IP65
- 2-12 Button Configurations
- Factory Configurable
- Replacement Enclosures, Contacts, Legends, and Button Covers



5502 Series

PG Compact Pistol Grip Styles

- Available in popular compact design and 2-button single speed versions
- Factory Configurable
- Replacement Enclosures, Contacts, Legends, and Button Covers

5503 Series

PF Style with E-Stop

- Available with 1, 2, 3 speed contacts with momentary and maintained E-Stop
- Factory Configurable
- Replacement Enclosures, Contacts, Legends, and Button Covers



Flexible MINI-SYNC™ and MICRO-SYNC™ Connectors, Cable Assemblies and Receptacles

- Made in the USA
- NEMA 6P and IP68
- Compatible with US and European Sensors
- Corrosion Resistant Gold-Plated Contacts
- Custom Configurations Available

