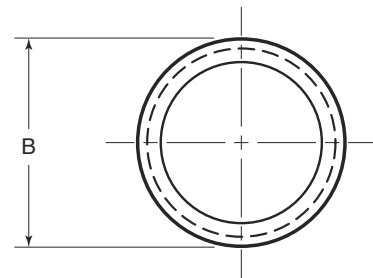
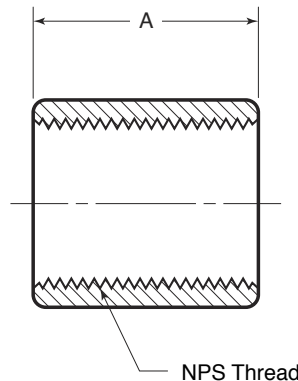
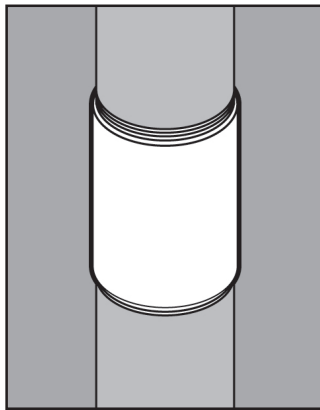


# STAINLESS STEEL COUPLINGS



## APPLICATION

- Provide a means of joining conduit, elbows, nipples, etc.
- Threaded straight through
- Designed for use with NPS threaded conduit products
- Offered in Type 316 SS and Type 304 SS
- Manufactured in stainless steel to help prevent corrosion
- Can be installed using ordinary hand tools and require little maintenance or repair
- Provided in a bright, polished finish that does not require touch up or painting



## PRODUCT DETAILS

**Material:**  
316 SS and 304 SS

**Standards:**  
ASTM A312

**Country of Origin:**  
Manufactured in USA

**UL File Number:**  
DYWV.E300683  
(Standard 6A)

**Canada UL File Number:**  
DYWV7.E300683  
(Standard 6A)

Part Number	Size	Weight/ 100 (lbs.)	Length (in.) "A"	Outside Diameter (in.) "B"
CPL50	½ in.	15	1.63	1.09
CPL75	¾ in.	18	1.64	1.34
CPL100	1 in.	32	1.97	1.58
CPL125	1-¼ in.	41	2.03	1.97
CPL150	1-½ in.	58	2.06	2.24
CPL200	2 in.	77	2.13	2.77
CPL250	2-½ in.	179	3.19	3.30
CPL300	3 in.	245	3.31	3.83
CPL400	4 in.	309	3.52	5.02

Type 304 SS products are denoted by adding "-304SS." For example: CPL75-304SS.



© 2015 GIBSON STAINLESS & SPECIALTY, INC. - REV 12/2015

PO BOX 847, GREENSBURG, PA 15601  
PHONE: 1-800-945-4316 • FAX: 724-838-1544  
WEB: GIBSONSTAINLESS.COM