

BLD Series

**HALO**



**5**  
seleCCTable™  
colors

BLD LED  
Surface LED Downlight

**EATON**

*Powering Business Worldwide*



- 4" aperture low profile surface mounting options
- Two distinct lumen packages & CCT configurations available in both apertures
- 600 lumen package is available in 3000K
- 800 lumen package is available with field SeleCCTable CCT - 2700K|3000K|3500K|4000K|5000K
- 8.2W – 10.3W, Integral 120v 60 Hz constant current driver
- 90 CRI minimum as standard
- L70 @ 50,000 Hrs
- Dimmable to 5% with many 120V leading-edge and trailing-edge phase control dimmers
- Five-year limited warranty
- Installs in many 3-1/2" and 4" ceiling junction boxes as well as pancake boxes\*
- Retrofits 4" recessed downlight housings
- cULus certified for Halo housings and many other housings\*\*
- Damp Location Listed for walls
- Wet Location Listed for showers and outdoor protected ceilings
- AIR-TITE™ certified per ASTM-E283
- Plug-in LED connector for easy installation
  - Supply wire adapter connection, for junction box wiring
  - Screwbase adapter for recessed housing retrofit

## Ordering Information

SAMPLE NUMBER: BLD406930WH

Models	Lumens	CRI / CCT	Finish	Voltage
BLD4 = 4" Backlit LED Downlight	06=600 lumen	930=90 CRI, 3000K	WH= matte white	Blank= 120V

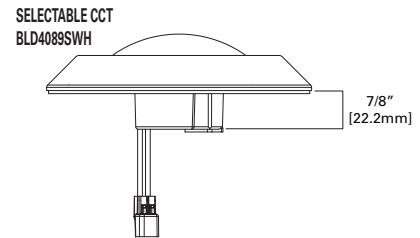
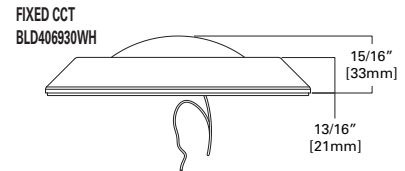
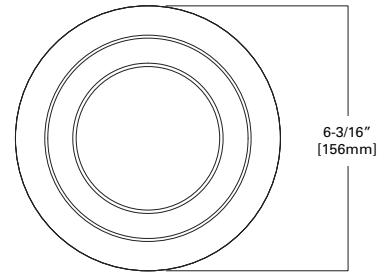
SAMPLE NUMBER: BLD4089SWH

Models	Lumens	CRI / CCT	Finish	Voltage
BLD4 = 4" Backlit LED Downlight	08=800 lumen	9S=90 CRI, SeleCCTable 2700K, 3000K, 3500K, 4000K & 5000K	WH= matte white	Blank= 120V



\* Selectable CCT configurations are not compatible with pancake junction boxes, please see installation instructions for further details.

\*\* Please verify the selected housing meets minimum requirement for internal volume. Refer to specification sheet for further details.



3000K - dedicated	
Lumens	690
Wattage	8.2W
Input current	0.07
Efficacy	84.1 LPW
THD	15.1%
Frequency	60 Hz
T Ambient	-30 - +40°C
Voltage	120V
Sound Rating	Class A
Power Factor	0.99

SeleCCTable 2700K – 5000K	
Lumens	802
Wattage	10.3W
Input current	0.087
Efficacy	77.9 LPW
THD	11.9%
Frequency	60 Hz
T Ambient	-30 - +40°C
Voltage	120V
Sound Rating	Class A
Power Factor	0.99



Refer to ENERGY STAR® Certified Products List. Can be used to comply with California Title 24 High Efficacy requirements. Certified to California Appliance Efficiency Database under JA8.



- 6" aperture low profile surface mounting options
- Two distinct lumen packages & CCT configurations available in both apertures
- 600 lumen package is available in 3000K
- 800 lumen package is available with field SeleCCTable CCT - 2700K|3000K|3500K|4000K|5000K
- 8.2W – 10.3W, Integral 120v 60 Hz constant current driver
- 90 CRI minimum as standard
- L70 @ 50,000 Hrs
- Dimmable to 5% with many 120V leading-edge and trailing-edge phase control dimmers
- Five-year limited warranty
- Installs in many 3-1/2" and 4" ceiling junction boxes as well as pancake boxes\*
- Retrofits 6" recessed downlight housings
- cULus certified for Halo housings and many other housings\*\*
- Damp Location Listed for walls
- Wet Location Listed for showers and outdoor protected ceilings
- AIR-TITE™ certified per ASTM-E283
- Plug-in LED connector for easy installation
  - Supply wire adapter connection, for junction box wiring
  - Screwbase adapter for recessed housing retrofit

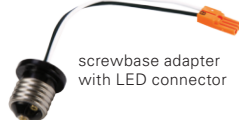
### Ordering Information

SAMPLE NUMBER: BLD606930WH

Models	Lumens	CRI / CCT	Finish	Voltage
BLD6 = 6" Backlit LED Downlight	06=600 lumen	930=90 CRI, 3000K	WH= matte white	Blank= 120V

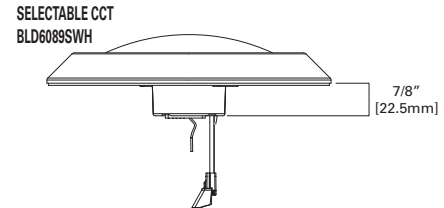
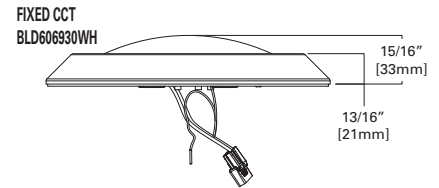
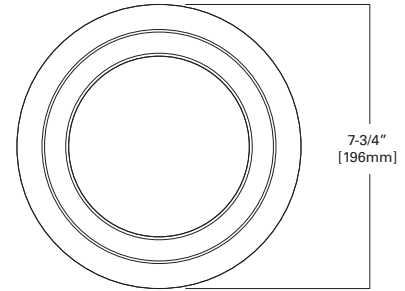
SAMPLE NUMBER: BLD6089SWH

Models	Lumens	CRI / CCT	Finish	Voltage
BLD6 = 6" Backlit LED Downlight	08=800 lumen	9S=90 CRI, SeleCCTable 2700K, 3000K, 3500K, 4000K & 5000K	WH= matte white	Blank= 120V



\* Selectable CCT configurations are not compatible with pancake junction boxes, please see installation instructions for further details.

\*\* Please verify the selected housing meets minimum requirement for internal volume. Refer to specification sheet for further details.



3000K - dedicated	
Lumens	700
Wattage	8.2W
Input current	0.07
Efficacy	85.4 LPW
THD	14.3%
Frequency	60 Hz
T Ambient	-30 - +40°C
Voltage	120V
Sound Rating	Class A
Power Factor	0.99

SeleCCTable 2700K – 5000K	
Lumens	812
Wattage	10.3W
Input current	0.088
Efficacy	78.8 LPW
THD	11.8%
Frequency	60 Hz
T Ambient	-30 - +40°C
Voltage	120V
Sound Rating	Class A
Power Factor	0.99



Refer to ENERGY STAR® Certified Products List. Can be used to comply with California Title 24 High Efficacy requirements. Certified to California Appliance Efficiency Database under JA8.

# BLD4 Housing Compatibility

**BLD4 LED is rated for installation in 4" HALO and other housings.**

<b>HALO LED<sup>1</sup></b>	H995ICAT, H995RICAT, H245ICAT, H245RICAT
<b>HALO</b>	H99ICAT, H99RTAT, H99TAT, E4ICATSB, E4TATSB, E4RTATSB
<b>Other Brands</b>	The BLD4 is UL Certified for use with any 4" diameter recessed housing constructed of steel or aluminum with an internal volume that exceeds 62.3 in <sup>3</sup> in addition to those noted above.

<sup>1</sup> HALO LED housings are non-screw base, high-efficiency code compliant.

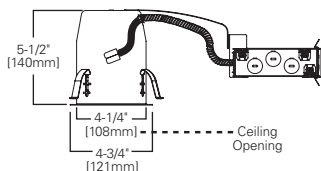
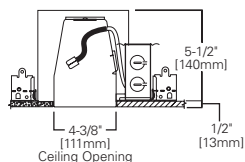
## H995ICAT

4" LED, IC, AIR-TITE,  
New Construction Housing



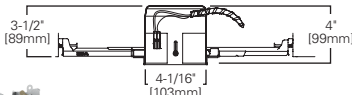
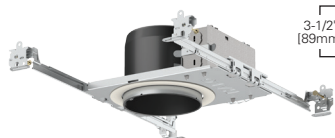
## H995RICAT

4" LED, IC, AIR-TITE,  
Remodel Housing



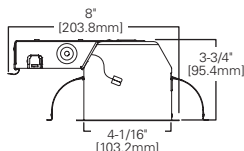
## H245ICAT

4" LED, Ultra-shallow, IC, AIR-TITE, New Construction Housing



## H245RICAT

4" LED, Ultra-shallow, IC, AIR-TITE, Remodel Housing



### Friction clip install



# BLD6 Housing Compatibility

**BLD6 LED is rated for installation in 6" HALO and other housings.**

<b>HALO 6" LED<sup>1</sup></b>	H750ICAT, H750RICAT, H750T, H750TCP, H2750ICAT, H2750RICAT, E750ICAT, E750RICAT
<b>HALO 6"</b>	H7ICAT, H7RICAT, H7ICT, H7RICT, H7ICATNB, H7ICTNB, H7T, H7RT, H7TNB, H7TCP, H7UICAT, H7UICATNB, H27RICAT, H27T, H27RT, E7ICAT, E7RICAT, E27ICAT, E27RICAT, E7ICATNB, E7TAT, E7RTAT, E7TATNB, E27TAT, E27RTAT
<b>HALO LED Retrofit</b>	ML7BXRFK, ML7E26RFK
<b>Other Brands*</b>	The BLD6 is UL Certified for use with any 6" diameter recessed housing constructed of steel or aluminum with an internal volume that exceeds 107.9 in <sup>3</sup> in addition to those noted above.

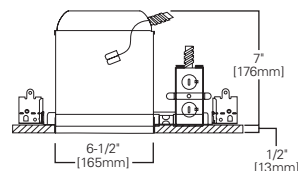
<sup>1</sup> HALO LED housings are non-screw base, high-efficiency code compliant.

\*When using BLD6 torsion springs for retrofit some housings will not have torsion spring receiver brackets –use HALO ML7RAB retrofit adapter band (order separately)

<sup>1</sup> HALO LED housings are non-screw base, high-efficiency code compliant.

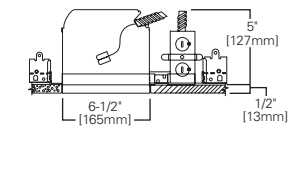
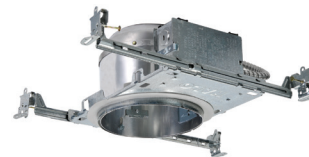
## H750ICAT

6" LED, IC, AIR-TITE, Standard  
New Construction Housing



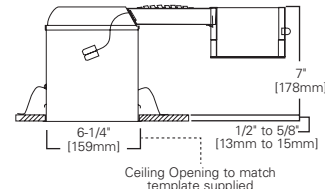
## H2750ICAT

6" LED, IC, AIR-TITE, Shallow  
New Construction Housing



## H750RICAT

6" LED, IC, AIR-TITE, Standard Remodel Housing





### Friction clip install



### Torsion spring install



		BLD4	BLD6
	<b>Octagon - steel light fixture / fan box</b>		
	4" x 4" x 2-1/8"	✓	✓
	4" x 4" x 1-1/2"		✓
	<b>Square - steel deep box</b>		
	4" x 4" x 2-1/8"		✓
	4" x 4" x 1-1/2"	✓	✓
	<b>Round - new work fixture box (plastic)</b>		
	4" diameter x 2-3/16"	✓	✓
	<b>Round - new work ceiling box (plastic)</b>		
	3-1/2" diameter x 2-3/4"	✓	✓
	<b>Round - old work fixture box (plastic)</b>		
	4" diameter x 2-3/16"	✓	✓
	<b>Round - new work fixture box (plastic) with bar hanger</b>		
	4" diameter x 2-3/16"	✓	✓
	<b>Round surface mount</b>		
	4" diameter x 1-1/2"	✓	✓
	<b>Round ceiling pan**</b>		
	4" diameter x 13/16"	✓	✓
	<b>TP316 - Eaton's Crouse-Hinds junction box for non-metallic cable</b>		
	4" x 2-1/8"	✓	✓
	<b>TP317 - Eaton's Crouse-Hinds junction box for metal clad cable</b>		
	4" x 2-1/8"	✓	✓

## Junction box install



# HALOHOME™

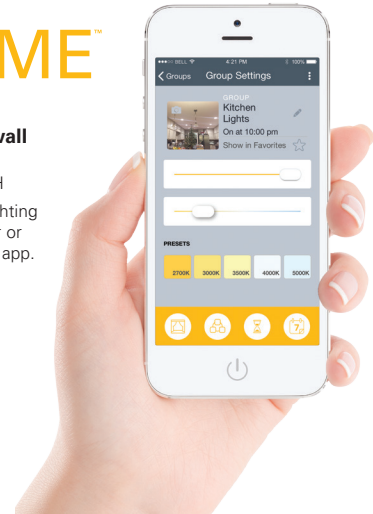


## HALO Home In-wall Smart Dimmer

HIWMA1BLE40AVH

Controls standard lighting fixtures with dimmer or HALO Home mobile app. Features include:

- ON/OFF
- Dim
- Group
- Scene
- Schedule



Eaton dimmers offer versatile options to set the mood and reduce energy consumption. These compatible LED dimmers are ideal for both residential and light commercial applications and are compatible with decorator (screwless) style devices and wallplates. Refer to [www.eaton.com](http://www.eaton.com) for additional information.



Dimmer Features	Decorator (DAL06P)	Slide (SAL06P)	Toggle (TAL06P)
Rapid Start feature	Fully adjustable	Fixed ON	Fully adjustable
Adjustable high-end trim			
Adjustable low-end trim	•	•	•
Wiring configurations	Single-pole or three-way	Single-pole or three-way	Single-pole or three-way
Color change kits	•		•

\*This is a representative list of compatible junction boxes only. Information contained in this literature about other manufacturers' products is from published information made available by the manufacturer and is deemed to be reliable, but has not been verified. Eaton makes no specific recommendation on product selection and there are no warranties of performance or compatibility implied. Installer must determine that site conditions are suitable to allow proper installation of the mounting bracket in the box.

\*\* Only compatible with fixed CCT BLD406930 & BLD606930

# Product and Photometric Data

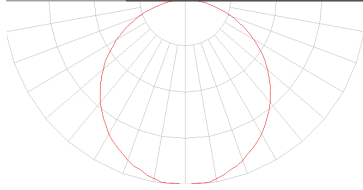
## BLD406930WH

BLD4 3000K

BLD406930WH		
Luminaire lumens	690	
Input watts	8.2	
LER (LPW)	84.1	
Spacing Criteria	0-180	1.26
	90-270	1.26
	Diagonal	1.38
Beam angle (degrees)	114.4	
Field angle (degrees)	178.6	
Max. Candela	222	
Zonal lumen	Lumens	% Lumens
0-30	172	24.9%
0-40	282	40.8%
0-60	502	72.7%
0-90	690	100.00%

Color Metric Summary-3000K	
TM-30-15	Rf = 91
	Rg = 101.1
CRI/CIE	Ra = 93
	R9 = 75

CCT - Range of 2700K- 5000K



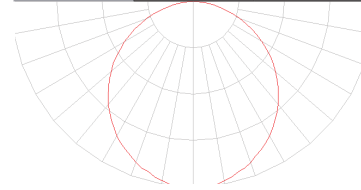
## BLD606930WH

BLD6 3000K

BLD606930WH		
Luminaire lumens	700	
Input watts	8.2	
LER (LPW)	85.4	
Spacing Criteria	0-180	1.26
	90-270	1.26
	Diagonal	1.38
Beam angle (degrees)	112.3	
Field angle (degrees)	170.2	
Max. Candela	235.8	
Zonal lumen	Lumens	% Lumens
0-30	182	26.0%
0-40	298	42.5%
0-60	527	75.3%
0-90	700	100.00%

Color Metric Summary-3000K	
TM-30-15	Rf = 92.1
	Rg = 102
CRI/CIE	Ra = 93
	R9 = 77

CCT - Range of 2700K- 5000K



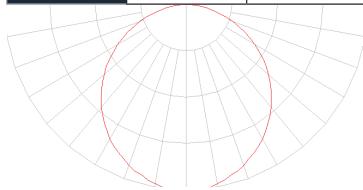
## BLD4089SWH

BLD4 SeleCCTable

BLD4089SWH		
Luminaire lumens	802	
Input watts	10.3	
LER (LPW)	77.9	
Spacing Criteria	0-180	1.28
	90-270	1.28
	Diagonal	1.4
Beam angle (degrees)	116.8	
Field angle (degrees)	180	
Max. Candela	250	
Zonal lumen	Lumens	% Lumens
0-30	195	24.3%
0-40	321	40.0%
0-60	576	71.8%
0-90	802	100.00%

Color Metric Summary-3000K	
TM-30-15	Rf = 91.8
	Rg = 101.3
CRI/CIE	Ra = 93
	R9 = 70

CCT - Range of 2700K- 5000K



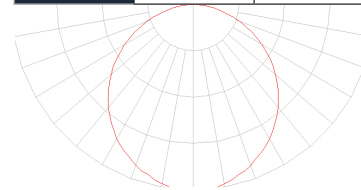
## BLD6089SWH

BLD6 SeleCCTable

BLD6089SWH		
Luminaire lumens	812	
Input watts	10.3	
LER (LPW)	78.8	
Spacing Criteria	0-180	1.24
	90-270	1.24
	Diagonal	1.36
Beam angle (degrees)	108.5	
Field angle (degrees)	170.3	
Max. Candela	283.5	
Zonal lumen	Lumens	% Lumens
0-30	217	26.7%
0-40	352	43.4%
0-60	615	75.7%
0-90	812	100.00%

Color Metric Summary-3000K	
TM-30-15	Rf = 92.5
	Rg = 102
CRI/CIE	Ra = 93
	R9 = 76

CCT - Range of 2700K- 5000K



\*Additional photometric ies files available online.

[eaton.com/lighting](http://eaton.com/lighting)

\*Additional photometric ies files available online.

[eaton.com/lighting](http://eaton.com/lighting)

## **Eaton**

1121 Highway 74 South  
Peachtree City, GA 30269  
P: 770-486-4800  
[www.eaton.com/lighting](http://www.eaton.com/lighting)

Canada Sales  
5925 McLaughlin Road  
Mississauga, Ontario L5R 1B8  
P: 905-501-3000  
F: 905-501-3172

### **Our Lighting Product Lines**

Ametrix  
AtLite  
Corelite  
Ephesus  
Fail-Safe  
HALO  
HALO Commercial  
Invue  
io  
IRiS  
Lumark  
Lumière  
McGraw-Edison  
Metalux  
MWS  
Neo-Ray  
Portfolio  
RSA  
Shaper  
Streetworks  
Sure-Lites

### **Our Controls Product Lines**

Fifth Light Technology  
Greengate  
iLight (International Only)  
iLumin  
Zero 88

### **Connected Lighting Systems**

Distributed Low-Voltage Power  
HALO Home  
iLumen Plus  
LumaWatt Pro  
WaveLinx

#### **Eaton**

1121 Highway 74 South  
Peachtree City, GA 30269  
P: 770-486-4800  
[www.eaton.com/lighting](http://www.eaton.com/lighting)

© 2018 Eaton  
All Rights Reserved  
Printed in USA  
Publication No. BR518053EN  
August 2018

Products, specifications and  
compliances are subject to  
change without notice.

Eaton is a registered trademark.

All other trademarks are property  
of their respective owners.



*Powering Business Worldwide*