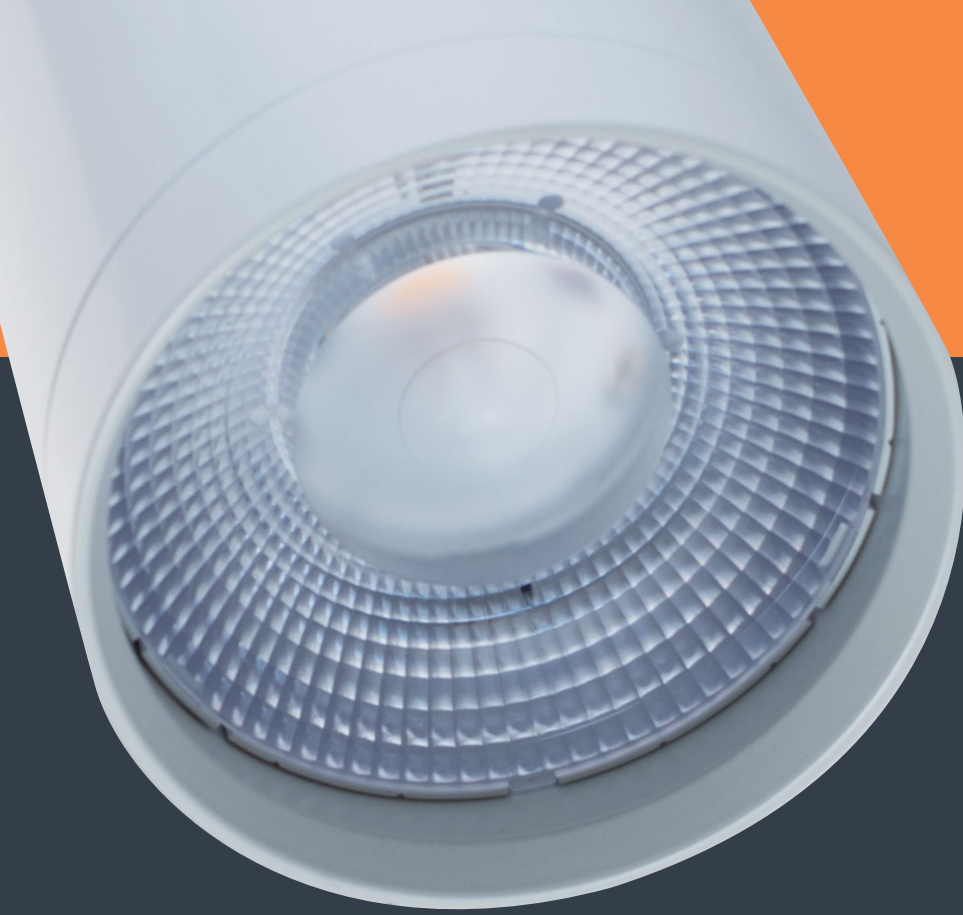




# HALO<sup>®</sup>

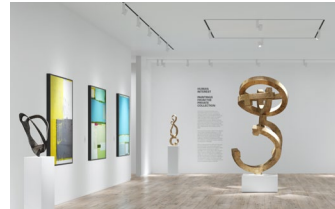
Stasis LED Track Luminaires





# STASIS

# *Spaces that Inspire with Stasis*



The right accent lighting can inspire awe among customers and patrons. With sleek simple lines, numerous beam widths and color temperatures, and all-encompassing light output levels, Stasis gives lighting designers the flexibility desired to create spaces that draw clout, foot traffic, sales, and good reviews.

# The Collection

With sleek, simple geometric profiles and high-performance optics, and a full range of beam angles in 3 different sizes, Stasis gives lighting designers superior flexibility to create accent lighting on any layout.

L815SML Small



MB  
Matte Black

P  
White

SL  
Silver

L815MED Medium



MB  
Matte Black

P  
White

SL  
Silver

L815SQ Square



MB  
Matte Black

P  
White

SL  
Silver

# All-metal housing + simple contours = no distraction

*The simple, timeless, durable all-metal housing design of Stasis gives a premium look and feel to everyday spaces so that customers experience the space, not the lighting fixtures themselves.*

## Sleak Form Factor

Concealed heat sink keeps audiences' attention away from the fixture and on the object of interest.

## Interchangeable Optics and Media Accommodation

Customers can order replacement optics if the application needs change. On the medium and small cylinders, Stasis accommodates up to 2 pieces of PAR30 and PAR20 media, respectively.



On/Off Switch

## Aiming

Full aiming capability. The Stasis luminaire can pivot  $\pm 90^\circ$  vertically and horizontally without adjusting track position.

Indentations every  $15^\circ$  for precise and repeatable tilt aiming.

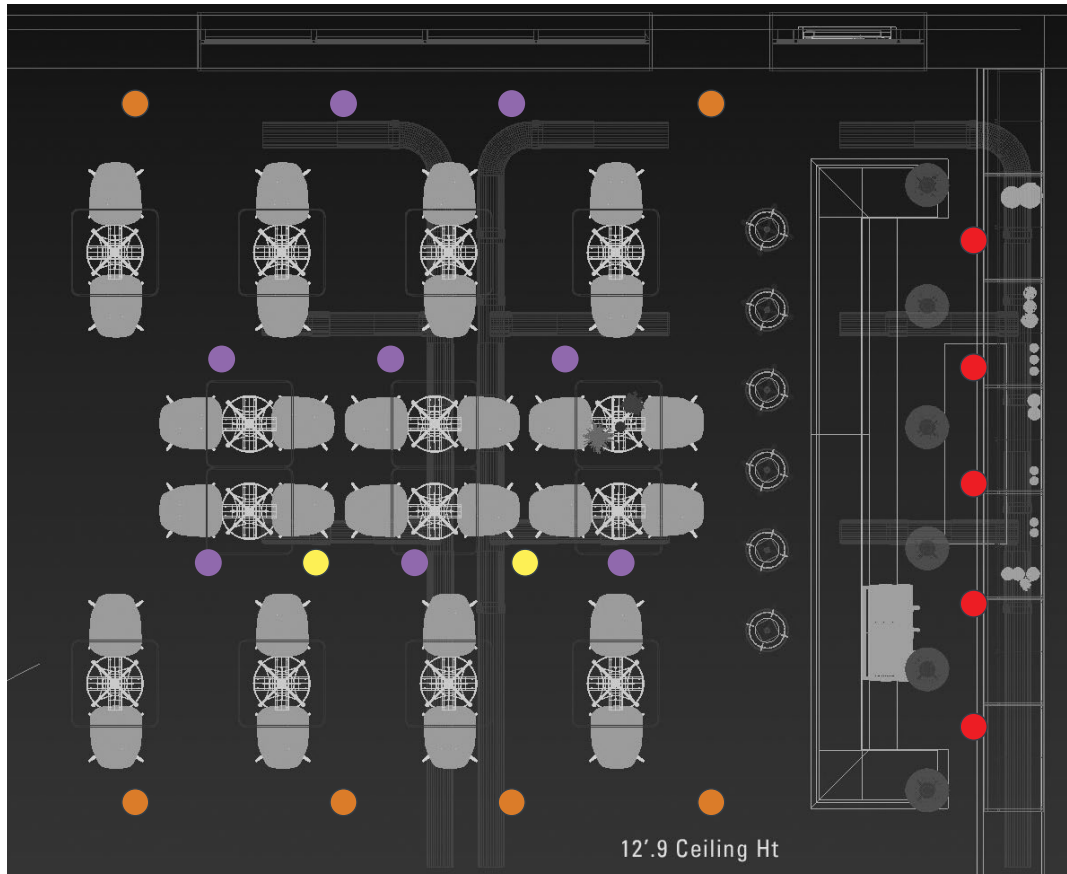










## Coffee Shop / Café

The Stasis Small is used in this urban-industrial café to create an inviting, casual environment for catching up with friends. Narrow floods provide focused light to tabletops, while floods provide general fill light to the café space. Wall Washes bring out the texture of the brick walls in this not-so-posh post-industrial gathering spot.



	L815SML05NF930MB - 500 lumen, narrow flood, 90 CRI, 3000K
	L815SML05SP930MB - 500 lumen, spot, 90 CRI, 3000K
	L815SML10WW930MB - 1000 lumen, wall wash, 90 CRI, 3000K
	L815SML10FL930MB - 1000 lumen, flood, 90 CRI, 3000K





## Furniture Gallery

The Stasis Square makes upholstery of most sizes look plush and brings out the texture in wood grain. A customer can feel comfy looking at a sofa across the store without even sitting in it.



L815SQ20FL930MB  
- 2000 lumen, flood, 90 CRI, 3000K



L815SQ10SP930MB  
- 1000 lumen, spot, 90 CRI, 3000K



L815SQ40FL930MB  
- 4000 lumen, flood, 90 CRI, 3000K



L815SQ20NF930MB  
- 2000 lumen, narrow flood, 90 CRI, 3000K



L815SQ20WW930MB  
- 2000 lumen, wall wash, 90 CRI, 3000K



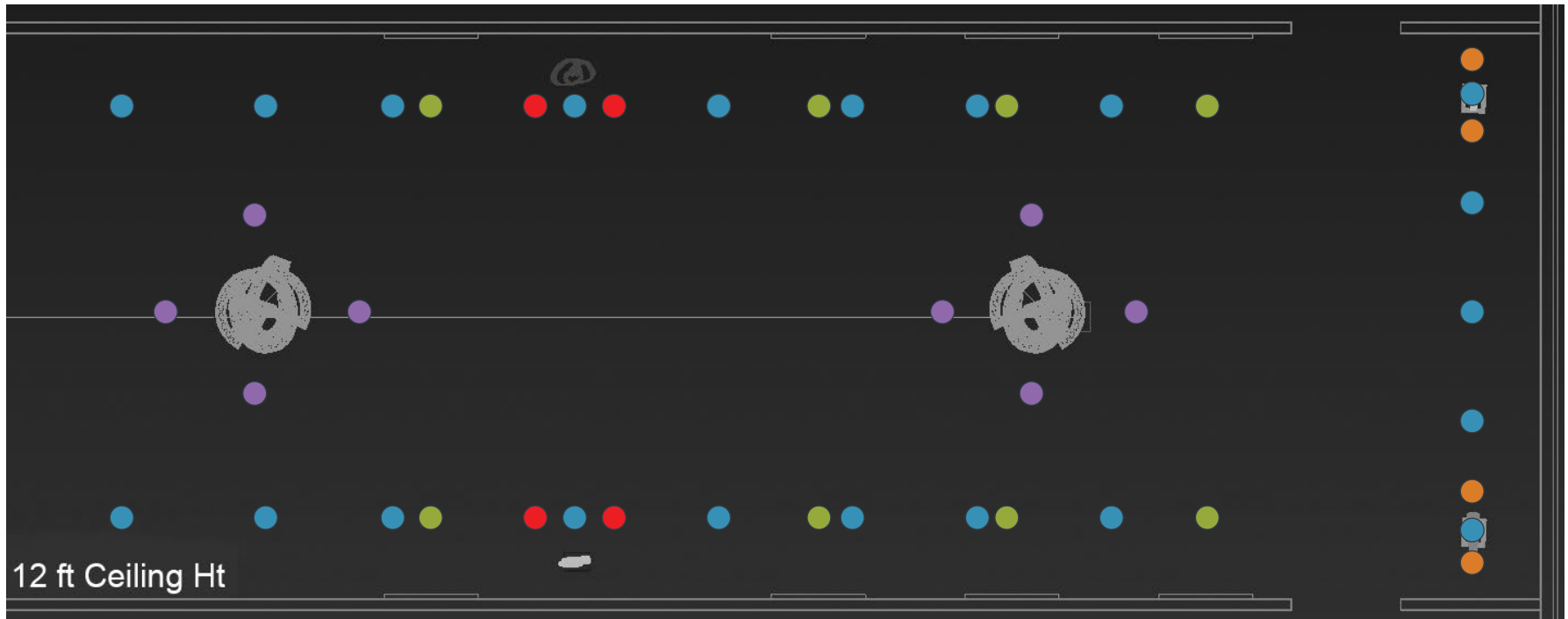
HUMAN  
INTEREST  
PAINTINGS  
FROM THE  
PRIVATE  
COLLECTION

Human Interest is a collection of paintings from the private collection of the artist. The collection features a variety of subjects, including portraits, landscapes, and still lifes. The paintings are characterized by their vibrant colors and bold lines. The collection is displayed in a gallery space with white walls and a wooden floor. The lighting is focused on the paintings, highlighting their details and colors. The overall atmosphere is one of modern elegance and artistic sophistication.



## Art Gallery

Stasis creates impactful contours to store goods and artwork. In this art gallery, Stasis spots give life to some abstract sculptures. Whether highlighting a student's capstone project in a school or a motor boat in a showroom, the stark contrasts of shadows and light provided by Stasis invite patrons and customers to have a closer look.



L815MED20SP930MB  
- 500 lumen, narrow spot, 90 CRI, 3000K



L815MED30SP930MB  
- 500 lumen, spot, 90 CRI, 3000K



L815MED20NS930MB  
- 1000 lumen, narrow spot, 90 CRI, 3000K



L815MED30NF930MB  
- 3000 lumen, wall wash, 90 CRI, 3000K



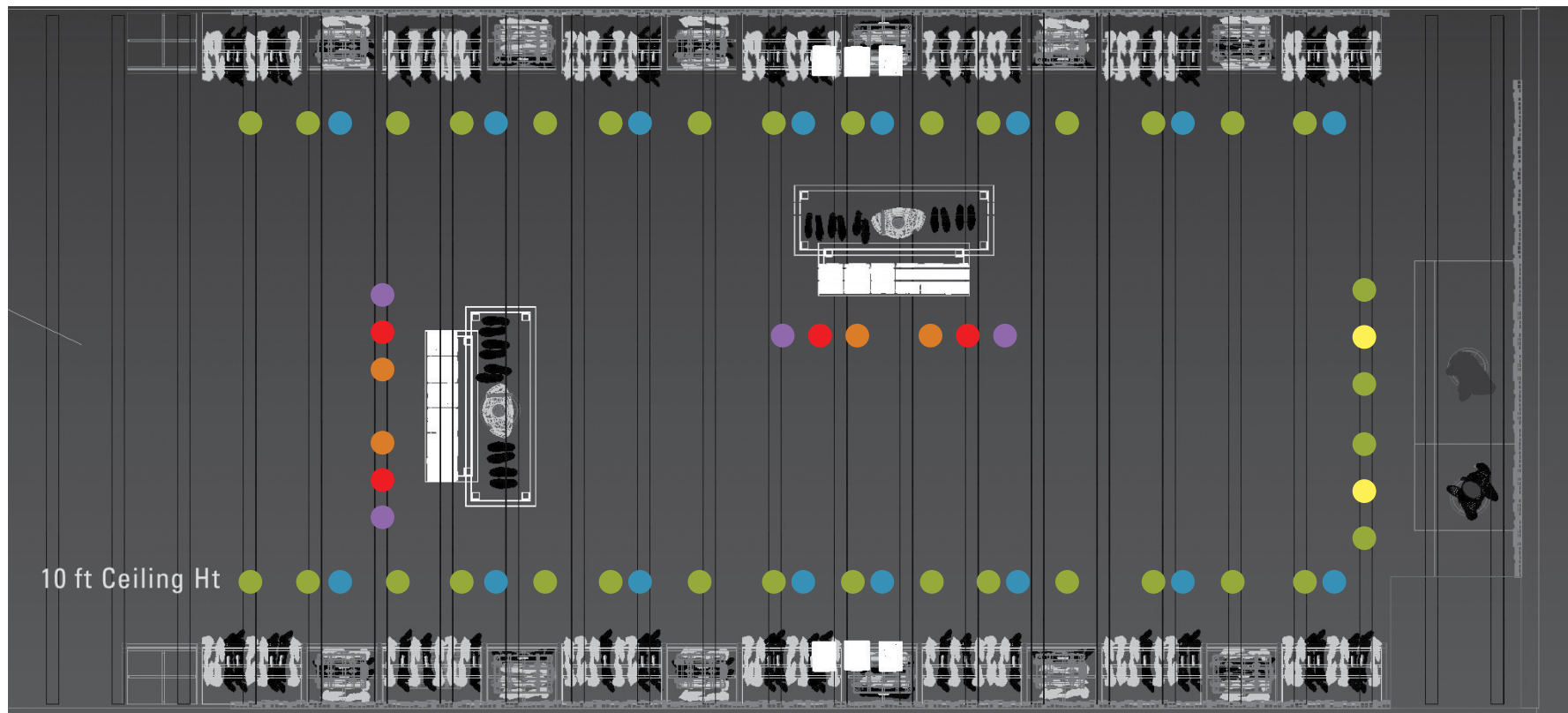
L815MED30WW930MB  
- 1000 lumen, narrow flood, 90 CRI, 3000K











## Clothing Store

Stasis cylinders nail contrast on a variety of wares. A combination of Stasis smalls and mediums are used to highlight the various articles of clothing available. The intense, narrow spots bring three dimensionality with strong contrast lines to the shoes and suit displays, while narrow floods create a grazing effect to the coat racks.

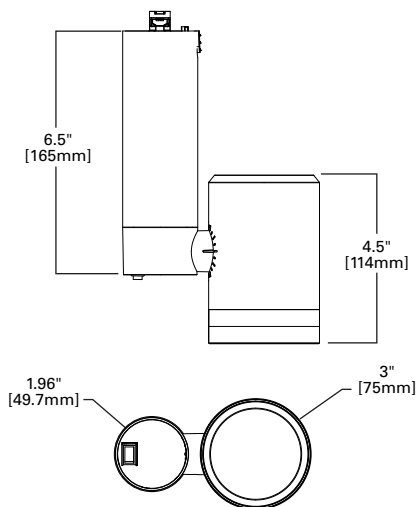


	L815SML05NS930MB - 500 lumen, narrow spot, 90 CRI, 3000K
	L815SML05SP930MB - 500 lumen, spot, 90 CRI, 3000K
	L815SML10NS930MB - 1000 lumen, narrow spot, 90 CRI, 3000K

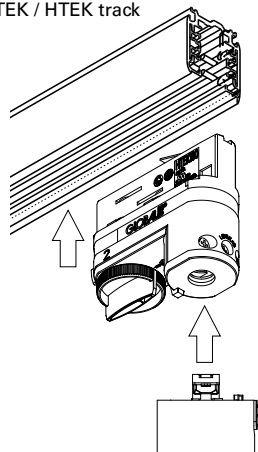
	L815MED30WW930MB - 3000 lumen, wall wash, 90 CRI, 3000K
	L815MED10NF930MB - 1000 lumen, narrow flood, 90 CRI, 3000K
	L815MED10SP930MB - 1000 lumen, flood, 90 CRI, 3000K



## L815 Stasis Small



Adapter for Global  
TEK / HTEK track



## Ordering Information

### Track

L=Halo Power Trac  
L2G=Global TEK/HTEK®  
LJ=Juno Track®

LL=Lightolier®  
M=Monopoint

### Size

815SML

### Output

05=500 Lumens  
10=1000 Lumens  
18=1800 Lumens

### Optic

NS=8 degrees  
SP=15 degrees  
NF=25 degrees

FL=45 degrees  
WW=Wall Wash

### CRI & CCT

927=2700K / 90 CRI  
930=3000K / 90 CRI

935=3500K / 90 CRI  
940=4000K / 90 CRI

### Finish

MB=Matte Black  
P=White  
SL=Silver

### Voltage

Blank=120V  
277=277V

### Accessories

#### Media Holder

LM11520MB=Small Media Holder, Black  
LM11520P=Small Media Holder, White  
LM11520SL=Small Media Holder, Silver

815MA115SML=Small Media Adapter (includes white and black)

#### L400 Color Filters

L411=Medium Pink  
L412=Warm Red  
L420=Daylight Blue  
L421=Medium Blue  
L431=Medium Amber  
L441=Medium Green  
L450=Solite

#### Snoot

LS115SMLMB=Small snoot, Black  
LS115SMLP=Small snoot, White  
LS115SMLSL=Small snoot, Silver

#### Bezel

LB115SMLMB=Small Bezel Accessory, Black  
LB115SMLP=Small Bezel Accessory, White  
LB115SMLSL=Small Bezel Accessory, Silver

#### Optics

815SMLFLOPK=Small Flood Optic Accessory  
815SMLNFOPK=Small Narrow Flood Optic Accessory  
815SMLNSOPK=Small Narrow Spot Optic Accessory  
815SMLSPOPK=Small Spot Optic Accessory

#### Wall Wash Optic

(includes optic and wall wash bezel)

815SMLWWOPKMB=Small Wall Wash Optic Accessory, Black  
815SMLWWOPKP=Small Wall Wash Optic Accessory, White  
815SMLWWOPKSL=Small Wall Wash Optic Accessory, Silver



[View spec sheet](#)

REFER TO SPECIFICATION SHEETS FOR ALL TECHNICAL NOTES, EXCEPTIONS, AND THE LATEST INFORMATION.

Global® is a registered trademark of Nordic Aluminum.

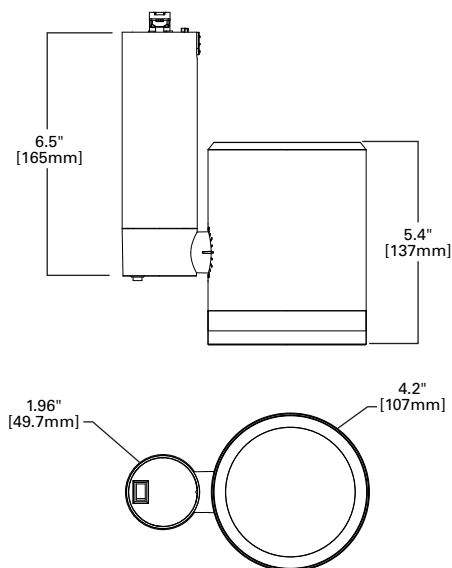
Juno® T single circuit and 2-circuit track contact. Juno® is a registered trademark of Juno® Lighting.

Lightolier® Lyfspan 6000 single circuit and 2 circuit track contact. Lightolier® is a registered trademark of Philips Lighting.

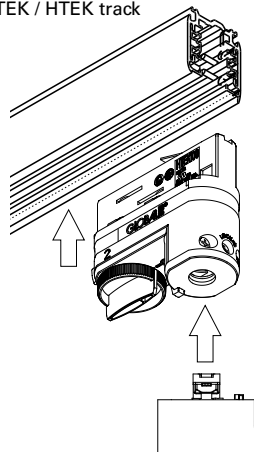




## L815 Stasis Medium



Adapter for Global  
TEK / HTEK track



## Ordering Information

### Track

L=Halo Power Trac  
L2G=Global TEK/HTEK®  
LJ=Juno Track®

LL=Lightolier®  
M=Monopoint

### Size

815MED

### Output

10=1000 Lumens  
20=2000 Lumens  
30=3000 Lumens

### Optic

NS=8 degrees  
SP=15 degrees  
NF=25 degrees

FL=45 degrees  
WF=60 degrees  
WW=Wall Wash

### CRI & CCT

927=2700K / 90 CRI  
930=3000K / 90 CRI

935=3500K / 90 CRI  
940=4000K / 90 CRI

### Finish

MB=Matte Black  
P=White  
SL=Silver

### Voltage

Blank=120V  
277=277V

### Accessories

#### Media Holder

LM11530MB=Medium Media Holder, Black  
LM11530P=Medium Media Holder, White  
LM11530SL=Medium Media Holder, Silver

815MA115MED=Medium Media Adapter (includes white and black)

#### L400 Color Filters

L411=Medium Pink  
L412=Warm Red  
L420=Daylight Blue  
L421=Medium Blue  
L431=Medium Amber  
L441=Medium Green  
L450=Solite

#### Snoot

LS115MEDMB=Medium snoot, Black  
LS115MEDP=Medium snoot, White  
LS115MEDSL=Medium snoot, Silver

#### Bezel

LB115MEDMB=Medium Bezel Accessory, Black  
LB115MEDP=Medium Bezel Accessory, White  
LB115MEDSL=Medium Bezel Accessory, Silver

#### Optics

815MEDFLOPK=Medium Flood Optic Accessory  
815MEDNFOPK=Medium Narrow Flood Optic Accessory  
815MEDNSOPK=Medium Narrow Spot Optic Accessory  
815MEDSOPK=Medium Spot Optic Accessory

#### Wall Wash Optic

(includes optic and wall wash bezel)

815MEDWWOPKMB=Medium Wall Wash Optic Accessory, Black  
815MEDWWOPKP=Medium Wall Wash Optic Accessory, White  
815MEDWWOPKSL=Medium Wall Wash Optic Accessory, Silver



View spec sheet

REFER TO SPECIFICATION SHEETS FOR ALL TECHNICAL NOTES, EXCEPTIONS, AND THE LATEST INFORMATION.

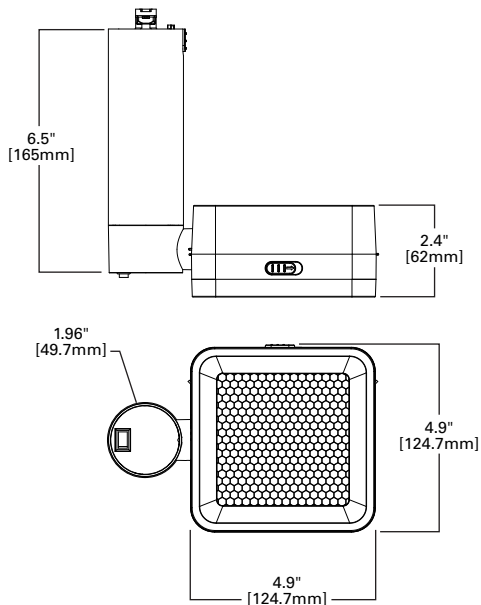
Global® is a registered trademark of Nordic Aluminum.

Juno® T single circuit and 2-circuit track contact. Juno® is a registered trademark of Juno® Lighting.

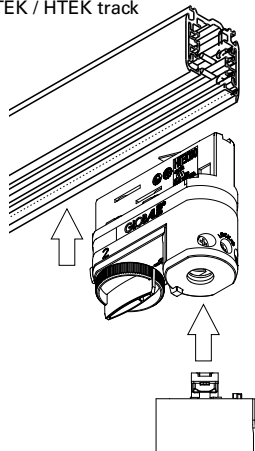
Lightolier® Lyfspan 6000 single circuit and 2 circuit track contact. Lightolier® is a registered trademark of Philips Lighting.



## L815 Stasis Square



Adapter for Global  
TEK / HTEK track



## Ordering Information

### Track

L=Halo Power Trac  
L2G=Global TEK/HTEK®  
LJ=Juno Track®

LL=Lightolier®  
M=Monopoint

### Size

815SQ

### Output

10=1000 Lumens  
20=2000 Lumens

30=3000 Lumens  
40=4000 Lumens

### Optic

SP=15 degrees  
NF=25 degrees  
FL=45 degrees

WF=60 degrees  
WW=Wall Wash

### CRI & CCT

927=2700K / 90 CRI  
930=3000K / 90 CRI

935=3500K / 90 CRI  
940=4000K / 90 CRI

### Finish

MB=Matte Black  
P=White  
SL=Silver

### Voltage

Blank=120V  
277=277V

### Accessories

#### Back Cover

815LRGCVPKMB=Square back cover, Black  
815LRGCVPKP=Square back cover, White  
815LRGCVPKSL=Square back cover, Silver

#### Cell Louver

LB115HEXSQ=Square hex cell louver

#### Optics - 1000 & 2000 Lumen

815SQSP130PK=Square Spot Optic Accessory  
815SQNF130PK=Square Narrow Flood Optic Accessory  
815SQFL130PK=Square Flood Optic Accessory  
815SQWF130PK=Square Wide Flood Optic Accessory  
815SQWW130PK=Square Wall Wash Optic Accessory

#### Optics - 3000 & 4000 Lumen

815SQSP260PK=Square Spot Optic Accessory  
815SQNF260PK=Square Narrow Flood Optic Accessory  
815SQFL260PK=Square Flood Optic Accessory  
815SQWF260PK=Square Wide Flood Optic Accessory  
815SQWW260PK=Square Wall Wash Optic Accessory



[View spec sheet](#)

REFER TO SPECIFICATION SHEETS FOR ALL TECHNICAL NOTES, EXCEPTIONS, AND THE LATEST INFORMATION.

Global® is a registered trademark of Nordic Aluminum.

Juno® T single circuit and 2-circuit track contact. Juno® is a registered trademark of Juno® Lighting.

Lightolier® Lyfespan 6000 single circuit and 2 circuit track contact. Lightolier® is a registered trademark of Philips Lighting.



# Stasis Accessories & Halo Track Systems

REFER TO SPECIFICATION SHEETS FOR ALL TECHNICAL NOTES, EXCEPTIONS, AND THE LATEST INFORMATION.



## Color Filters

Available for use with the L815SML and L815MED



## Media Holders

For use with color filters and other media on the L815SML and L815MED. Hold standard PAR20 and PAR30 media for small and medium sizes respectively.



## Snoot

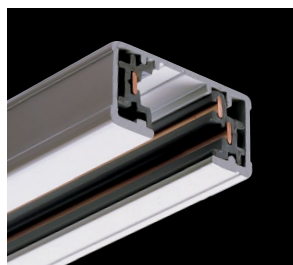
For cutoff and for use with color filters and other media on the L815SML and L815MED.



## Optics

Wide range of interchangeable optics available for the Stasis series.

8° (narrow spot) | 15° (spot) | 25° (narrow flood) | 45° (flood) | 60° (wide flood)



## Single Circuit Track

Miniature track provides versatility for every lighting need.

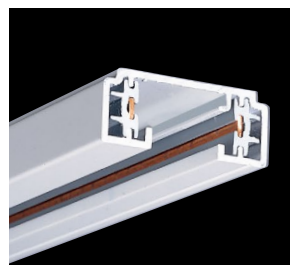
Decorator finishes, push-in connectors and economy all combine to make single-circuit track perfect for residential or commercial use.



## Two Circuit Power-Trac

Halo-2 Power-Trac has two circuits for greater system flexibility.

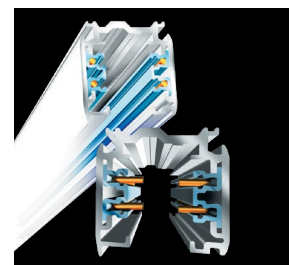
Halo-2 Power-Trac system provides two separate 20 AMP circuits. Each circuit can be independently switched. Suitable for commercial, merchandising and residential applications.



## Lazer Track

Lazer track offers economy and convenience.

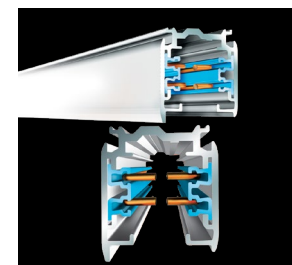
The Lazer Two-Conductor track is available in two finishes and 4 lengths. The overall height is only 9/16" with a decorative reveal at the ceiling line.



## TEK

Halo TEK track system for 120V installations has two isolated circuits for greater power handling and dimming capability.

The Halo TEK track system provides two isolated circuits each with its own neutral. Each circuit can be independently switched. Suitable for commercial, merchandising and residential applications.



## HTEK

Halo HTEK track system for 277V installations has two isolated circuits for longer runs, greater power handling and dimming capability.

The Halo HTEK track system provides two isolated circuits each with its own neutral. Each circuit can be independently switched. Suitable large retail and institutional applications.

**Lighting Product Lines**

Ametrix  
AtLite  
Corelite  
Ephesus  
Fail-Safe  
HALO  
HALO Commercial  
Invue  
io  
IRiS  
Lumark  
Lumière  
McGraw-Edison  
Metalux  
MWS  
Neo-Ray  
Portfolio  
RSA  
Shaper  
Streetworks  
Sure-Lites

**Controls Product Lines**

Fifth Light Technology  
Greengate  
iLight (International Only)  
iLumin  
Zero 88

**Connected Lighting Systems**

Distributed Low-Voltage Power  
HALO Home  
iLumin Plus  
LumaWatt Pro  
WaveLinx

**Cooper Lighting Solutions**

1121 Highway 74 South  
Peachtree City, GA 30269  
P: 770-486-4800  
[www.halolighting.com](http://www.halolighting.com)

**Canada Sales**

5925 McLaughlin Road  
Mississauga, Ontario L5R 1B8  
P: 905-501-3000  
F: 905-501-3172

© 2019 Cooper Lighting Solutions  
All Rights Reserved  
Printed in USA  
Publication No. BR518073EN  
December 9, 2019 9:31 AM

All other trademarks are property  
of their respective owners.

Product availability, specifications,  
and compliances are subject to  
change without notice.