

# Product data sheet

## Characteristics

# HOM4284L225PC

Load center, Homeline, 1 phase, 42 spaces, 84 circuits, 225A convertible main lugs, PoN, NEMA1, combo cover



### Main

Product Type	Load Center
Marketing Trade Name	Homeline
Load Center Type	Main lugs
Rated Current	225 A
Number of Spaces	42
Number of Circuits	84
Enclosure Rating	NEMA 1 indoor
Cover Type	Combination flush/surface cover
Electrical Connection	Lugs

### Complementary

Short Circuit Current Rating	10 kA
Number of Tandem Breakers	42
Number of Phases	1 phase
Rated Operational Voltage	120/240 V AC
Wire Size	AWG 4...250 kcmil copper AWG 4...300 kcmil aluminium
Wiring Configuration	3-wire
Cover Finish	Gray baked enamel
Busbar Material	Tin plated aluminium busbar
Enclosure Material	Welded sheet steel
Surface Finish	Baked enamel Gray
Box Number	12
Height	39.37 in (1000 mm)
Width	14.25 in (362 mm)
Depth	3.74 in (95 mm)

### Environment

Ambiant Air Temperature for Operation	23 °F (-5 °C) 104 °F (40 °C)
Product Certifications	UL E-6294

### Ordering and shipping details

Category	00045 - HOM LC&CVR,12-42 CKT,NEMA1
Discount Schedule	DE3C
GTIN	00785901974352
Nbr. of units in pkg.	1
Package weight(Lbs)	35.9 lb(US) (16.28 kg)
Returnability	Yes
Country of origin	US

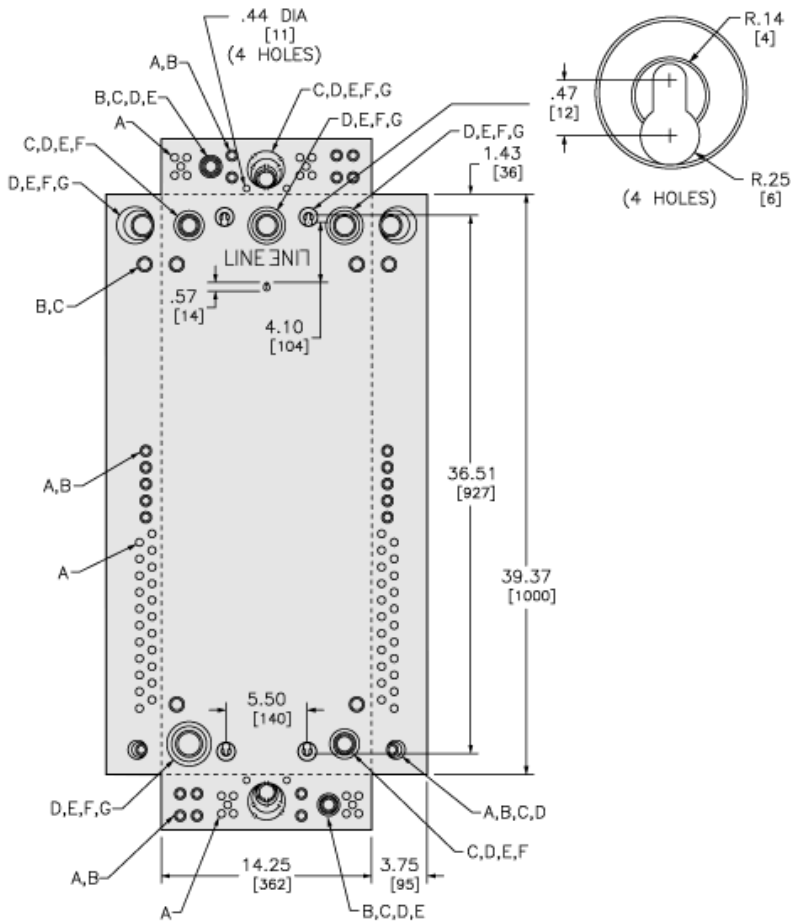
## Packing Units

Package 1 Height	0.46 ft (0.140 m)
Package 1 width	1.36 ft (0.414 m)
Package 1 Length	3.52 ft (1.072 m)

## Offer Sustainability

Sustainable offer status	Green Premium product
REACH Regulation	<a href="#">REACH Declaration</a>
REACH free of SVHC	Yes
EU RoHS Directive	Compliant <a href="#">EU RoHS Declaration</a>
Toxic heavy metal free	Yes
Mercury free	Yes
RoHS exemption information	<a href="#">Yes</a>
China RoHS Regulation	<a href="#">China RoHS Declaration</a>
Environmental Disclosure	<a href="#">Product Environmental Profile</a>

Approximate Dimensions and Knockout Sizes



KNOCKOUTS							
SYMBOL	A	B	C	D	E	F	G
IN	.50	.75	1.00	1.25	1.50	2.00	2.50
MM	13	19	25	32	38	51	64

in.  
[mm]

## Connections and Wiring Diagrams

