

# MICRO-SYNC™ - Dual Key (AC) Receptacles

## SPECIFICATIONS

### MATERIALS

**Insert Material:** Zytel ST801

**O-Ring:** Nitrile Rubber

**Contact:** Brass, Gold Plated over Nickel

**Shell:** Machine Aluminum, Clear Anodized

**Lock Nut:** Plated Steel

**Wire:** #22 AWG PVC Insulated 26 x #36 stranding, 80°C

### ELECTRICAL

**Voltage Rating:** 300 VAC

**Current Rating:** #22 AWG – 2 to 5 Pole  
– 4A, 6 Pole – 3A / #18 AWG – 5A

**Contact Resistance:** <5mΩ

### ENVIRONMENTAL

**Protection:** IP68, NEMA 6P

**Operating Temp:** -20°C to 80°C

### CERTIFICATIONS



### OPTIONS

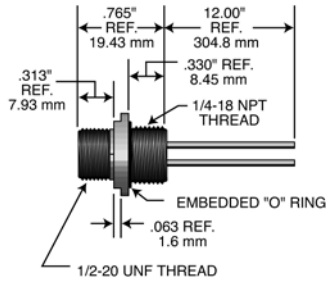
#18 AWG (PVC) Leads

Stainless Steel Shells

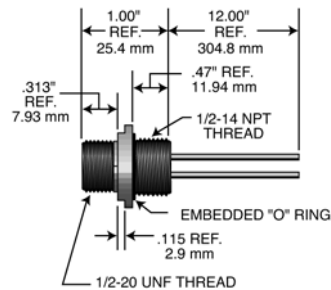
## DIMENSIONS

### Male Receptacles

#### 1/4" NPT

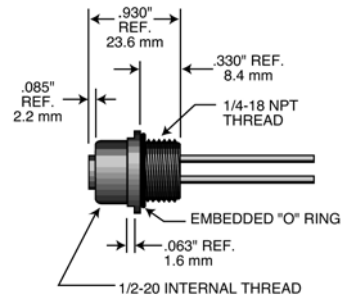


#### 1/2" NPT

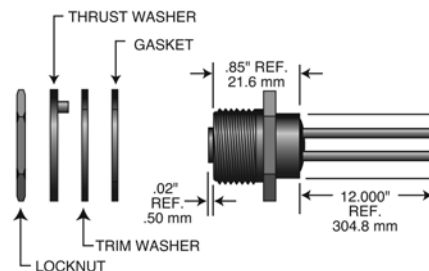


### Female Receptacles

#### 1/4" NPT



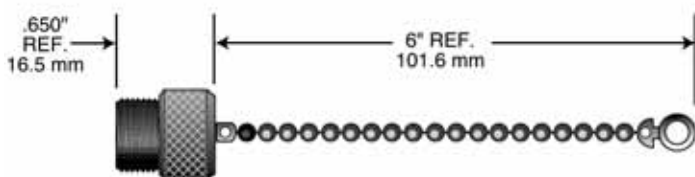
### Back Panel Mount



Poles	Face View	Rating	Wiring Code	Overall Length (ft./m)	MICRO-SYNC™ AC Male 1/2" NPT	MICRO-SYNC™ AC Male 1/4" NPT	MICRO-SYNC™ AC Female 1/4" NPT	MICRO-SYNC™ AC Female Back Panel
2	Male  Female 	4A 300V	1-Brown 2-Blue	12 inches	72MRK2	72MRK1	72FRK1	72FRK3
3	Male  Female 	4A 300V	1-Brown 2-Red/Black 3-Red/White	12 inches	73MRK2	73MRK1	73FRK1	73FRK3
4	Male  Female 	4A 300V	1-Red/Black 2-Red/White 3-Red 4-Green	12 inches	74MRK2	74MRK1	74FRK1	74FRK3
5	Male  Female 	4A 300V	1-Red/White 2-Red 3-Green 4-Red/Yellow 5-Red/Black	12 inches	75MRK2	75MRK1	75FRK1	75FRL3
6	Male  Female 	4A 300V	1-Red/White 2-Red 3-Green 4-Red/Yellow 5-Red/Black 6-Red/Blue	12 inches	76MRK2	76MRK1	76FRK1	N/A

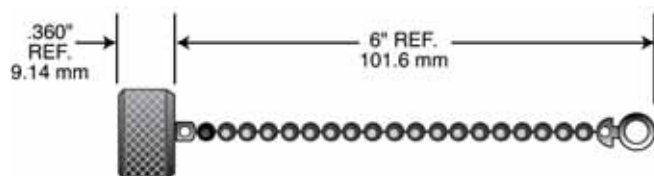
## Wire Management Accessories

### Closure Caps for Plugs and Receptacles With Internal Threads



Single Key (M12)	Dual Key (1/2-20)
9ETSKCC	7ETDKCC

### Closure Caps for Plugs and Receptacles With External Threads



Single Key (M12)	Dual Key (1/2-20)
9ITSKCC	7ITDKCC