



Main

Product	Single Throw Safety Switch
Current Rating	200 A
Certifications	UL listed file E2875
Enclosure Rating	NEMA 1 steel
Factory Installed Neutral	None
Disconnect Type	Non-fusible disconnect
Short Circuit Current Rating	200 kA maximum
Mounting Type	Surface
Number of Poles	3
Electrical Connection	Lugs
Duty Rating	Heavy duty
Voltage Rating	600 V AC/DC
Wire Size	AWG 6...250 kcmil copper or aluminium

Complementary

Short-circuit withstand	200 kA
Maximum Horse Power Rating	15 Hp 240 V AC 50...60 Hz 1 phase NEC 430.52 60 Hp 240 V AC 50...60 Hz 3 phase NEC 430.52 50 Hp 480 V AC 50...60 Hz 1 phase NEC 430.52 125 Hp 480 V AC 50...60 Hz 3 phase NEC 430.52 50 Hp 600 V AC 50...60 Hz 1 phase NEC 430.52 150 Hp 600 V AC 50...60 Hz 3 phase NEC 430.52 40 Hp 250 V DC 50 hp 600 V DC
Maximum Height	29 in (736.60 mm)
Maximum Depth	8.25 in (209.55 mm)
Maximum Width	18.5 in (469.90 mm)
Tightening torque	275 lbf.in (31.07 N.m) 0.02...0.20 in ² (13.3...127 mm ²) AWG 6...250 kcmil)

Ordering and shipping details

Category	00008 - H&HU SW,2&3P,N1,30-200A
Discount Schedule	DE1
GTIN	00785901505860
Nbr. of units in pkg.	1
Package weight(Lbs)	43.1 lb(US) (19.55 kg)
Returnability	Yes
Country of origin	US

Packing Units

Unit Type of Package 1	PCE
Package 1 Height	8.20 in (20.828 cm)
Package 1 width	19.30 in (49.022 cm)
Package 1 Length	30.70 in (77.978 cm)
Unit Type of Package 2	PAL
Number of Units in Package 2	15
Package 2 Weight	650.00 lb(US) (294.835 kg)
Package 2 Height	45.50 in (115.57 cm)

Package 2 width	40.00 in (101.6 cm)
Package 2 Length	48.00 in (121.92 cm)

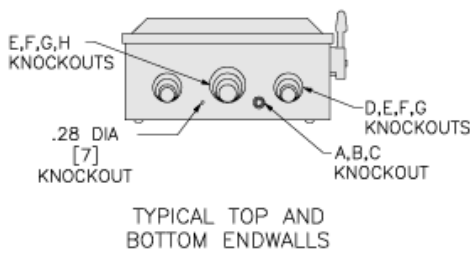
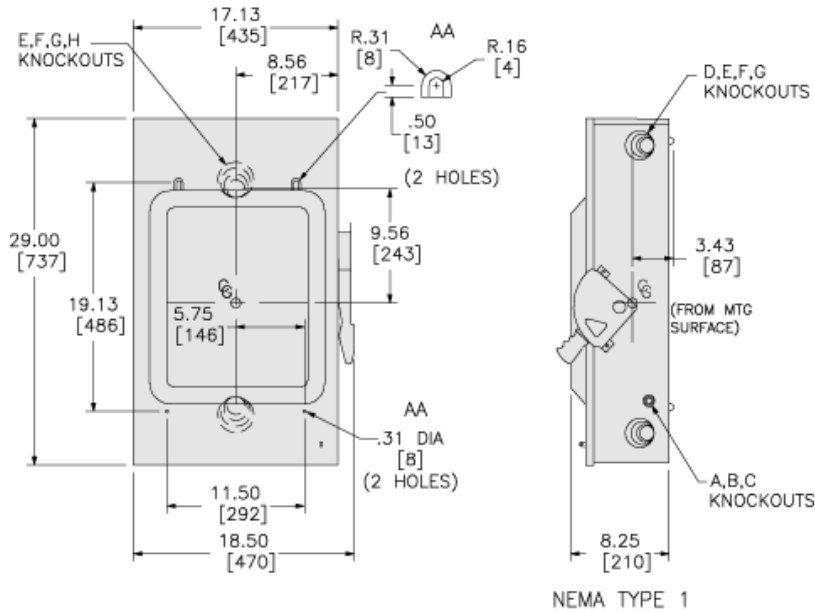
Offer Sustainability

Sustainable offer status	Green Premium product
REACH free of SVHC	Yes
EU RoHS Directive	Compliant EU RoHS Declaration
Toxic heavy metal free	Yes
Mercury free	Yes
RoHS exemption information	Yes
China RoHS Regulation	China RoHS Declaration
Environmental Disclosure	Product Environmental Profile

Contractual warranty

Warranty	18 months
----------	-----------

Approximate Dimensions



KNOCKOUTS				
SYMBOL	CONDUIT SIZE		DIAMETER	
	IN	MM	IN	MM
A	.50	13	.88	22
B	.75	19	1.13	29
C	1.00	25	1.38	35
D	1.25	32	1.75	45
E	1.50	38	2.00	51
F	2.00	51	2.50	64
G	2.50	64	3.00	76
H	3.00	76	3.50	89