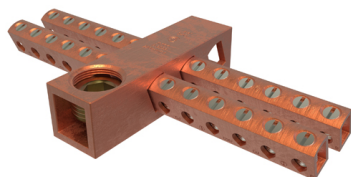


SKU: CAN-300

UPC: 0783669025200

Features & Benefits:

Description: Copper Neutral Bar, Conductor Range 250-6 Main, 6-14 Tap, 24 Ports



Specs

Additional Class Attributes

Connection	Mechanical
Mounting Hole Type	Tap
Number of Conductors	3
Number of Mounting Holes	2
Number of Poles	1
Number of Ports Tap	24
Replacement Part(s)	E-153
Type of Accessory	E-223

Dimensions

Dimension G (IN)	0.812
Dimension G (mm)	20.6248
Drive Size Main	NA
Drive Type Main	Slotted
Height (IN)	0.817
Height BX (IN)	2.25
Height (mm)	20.7518
Length (IN)	5.537
Mounting Bolt/Stud Size (mm)	26212.8
Mounting Hole Diameter (IN)	0.164
Mounting Hole Diameter (mm)	4.1656
Mounting Hole Spacing (IN)	1.125
Mounting Hole Spacing (mm)	28.575
Weight (LB)	0.894
Weight BX (LB)	1.794
Width (IN)	3.01
Width BX (IN)	5
Width (mm)	76.454

Material and Finish

Conductor Material	Copper
Connector Finish	NA
Insulation	NA
Material	Copper
Wire Binding Hardware Finish	Zinc Clear Trivalent Chromate
Wire Binding Hardware Material	Steel

Additional Technical Specifications

Conductor Type	Solid
----------------	-------

Bolt and Screw Sizes

Mounting Bolt/Stud Size	#10-32
Number of Wire Binding Screws per Port	1
Wire Binding Screw Size	1/4
Wire Binding Torque	10 - 14 AWG = 35

General

Bag Quantity	1
Carton Quantity Description	STD PACK QTY 1
Dual Rated	No
NEMA Code	S-588-3
UPC Code	78366902520

Testing Standards

CSA File Number	LR-29601
CSA Standard	C22.2 No. 65-03
Prop65 Compliance	This product is in compliance with Prop65. It is not known to contain any chemicals associated with this regulation
ROHS Indicator	IND
UL Control Number	NA
UL / CULUS Specification	UL 486A/B Recognized
UL File Number	E6207

Color

Color	Copper
-------	--------

Conductor Ranges

Conductor Range AL Solid (Secondary, tap, load)	NA
Conductor Range AL Stranded (Primary, run, main, line)	NA
Conductor Range AL Stranded (Secondary, tap, load)	NA
Conductor Range CU Solid (Primary, run, main, line)	NA
Conductor Range CU Solid (Secondary, tap, load)	10 Sol - 14 Sol
Conductor Range CU Stranded (Primary, run, main, line)	250 kcmil - 6 Str
Conductor Range CU Stranded (Secondary, tap, load)	6 Str - 14 Str
Conductor Range AL Solid (Primary, run, main, line)	NA