

KT-ABOLT-XSQ-K1

ANCHOR BOLTS

DESCRIPTION

Includes (4) high tensile steel anchor bolts, (8) carbon steel grade IS 2062 E250 anchor bolt nuts, (8) carbon steel grade IS 2062 E250 anchor bolt plane washers, and (4) carbon steel grade IS 2062 E250 anchor bolt spring washers.

FEATURES

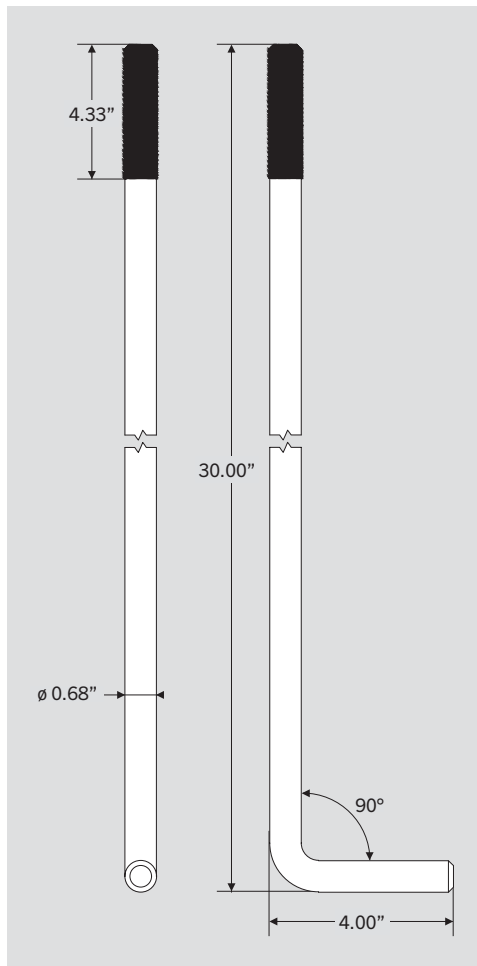
Anchor bolts are fabricated from high tensile steel and are "L" formed bars having a minimum yield strength of 55,000 P.S.I. The bolts are fully galvanized as per ASTM A153 specifications and finished complete with 2 hex nuts and 2 flat washers and 1 spring washer.



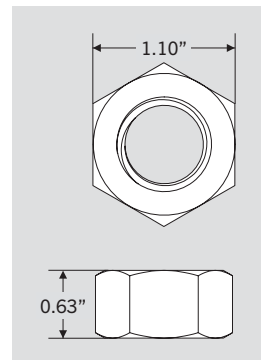
PHYSICAL DIMENSIONS

KT-ABOLT-4SQ-K1

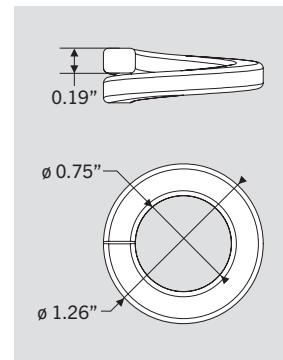
ANCHOR BOLT



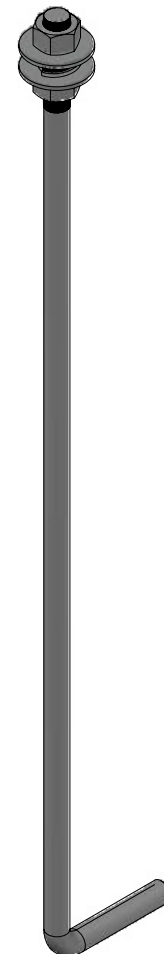
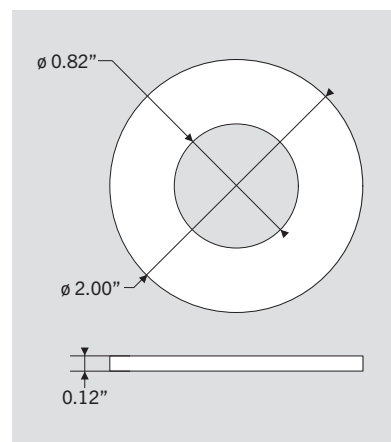
ANCHOR BOLT NUT



ANCHOR BOLT SPRING WASHER



ANCHOR BOLT PLANE WASHER

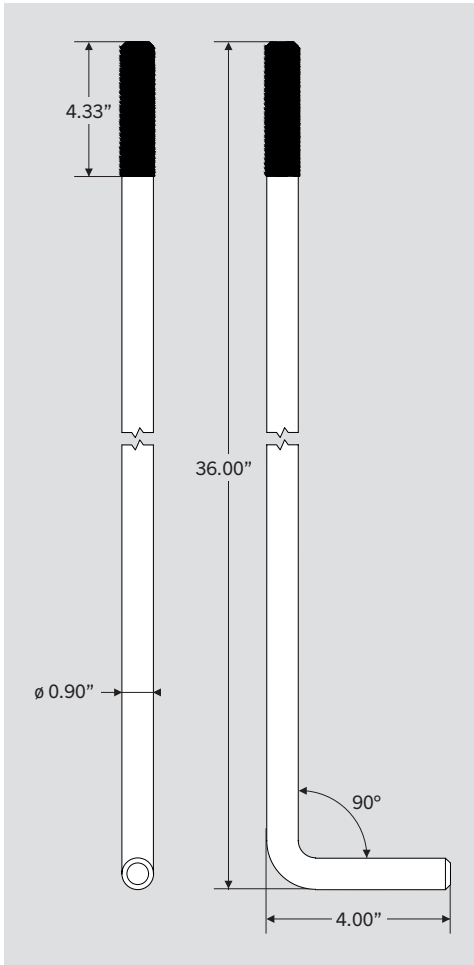


KT-ABOLT-XSQ-K1

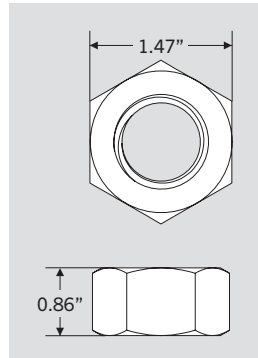
ANCHOR BOLTS

KT-ABOLT-5SQ-K1

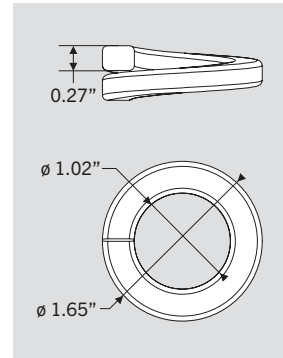
ANCHOR BOLT



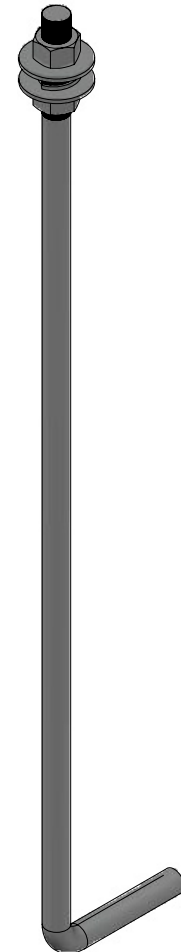
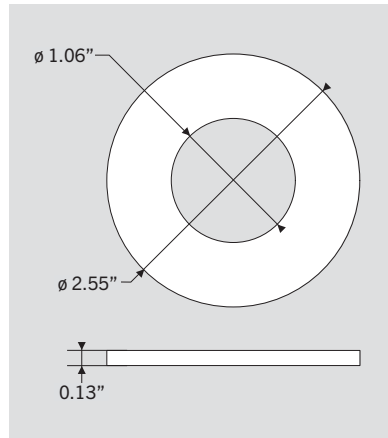
ANCHOR BOLT NUT



ANCHOR BOLT SPRING WASHER



ANCHOR BOLT PLANE WASHER



ORDERING INFORMATION

ORDER CODE	CARTON QUANTITY	EASY CODE	UPC
KT-ABOLT-4SQ-K1	TBD	ARO-13	843654138053
KT-ABOLT-5SQ-K1	TBD	NCI-73	843654138060