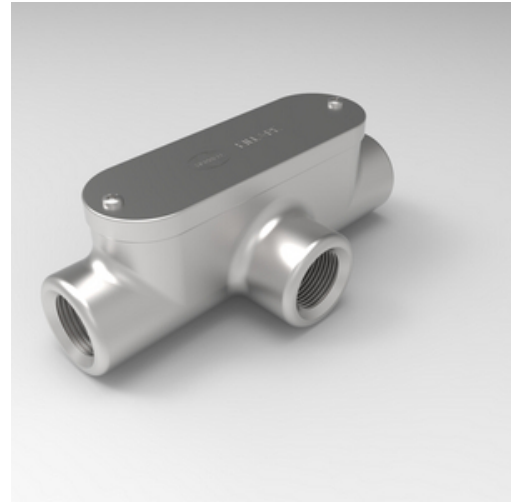




T58SS - 1-1/2" T Hub, 316 Stainless Steel Series Conduit Body

By Killark
Catalog # T58SS

1-1/2" T Hub, 316 Stainless Steel Series Conduit Body.



Features

- 316 stainless-steel for corrosive applications where integrity of the electric system is critical
- Long lasting life of conduit bodies due to self-healing properties of stainless-steel
- Flat back design for larger wiring capacity, pulling and maintenance
- Stainless-steel screws and covers with neoprene gasket comes standard for a Type 4X rating
- Tapered hubs to prevent water from entering the raceway

General

Catalog Number	T58SS
EU RoHS Indicator	Contact Manufacturer
Finish Type	Naturel
Material	316 Stainless Steel
Series	Stainless Steel
Type	
UPC	783936182070

Dimensions

Height	2.58 in
Hub Size	1-1/2"
Length	8.18 in
Weight	4.84 lb

Product Assets

- [3D Models - T58SS 3D Model](#)
- [Certifications - Stainless Steel & TET Outlet Boxes UL Certificate](#)
- [Certifications - Stainless Steel & TET UL Certificate For Canada](#)
- [Customer Notices - Prop 65 Notice](#)
- [Engineering Drawing - T58SS Engineering Drawing](#)
- [Sales Drawings - T58SS Sales Drawing](#)