

STACK™ Family Product Overview

The Next-Generation Family of Lay-ins

STACK Pack™

STACK Switch™

STACK™

STACK Prime™



Market Trends



Budgets are tighter than ever



Contractors are extremely sought after



Valuable distributor shelf space



Visual Comfort / New Requirements

Our Solution

Create a performance-tiered family, each designed to be the absolute best at what they do

Introducing a comprehensive group of center-element lay-ins, aesthetically similar but each version purposed-designed to tackle different pain points in the diverse customer base.



STACK Pack



STACK Switch

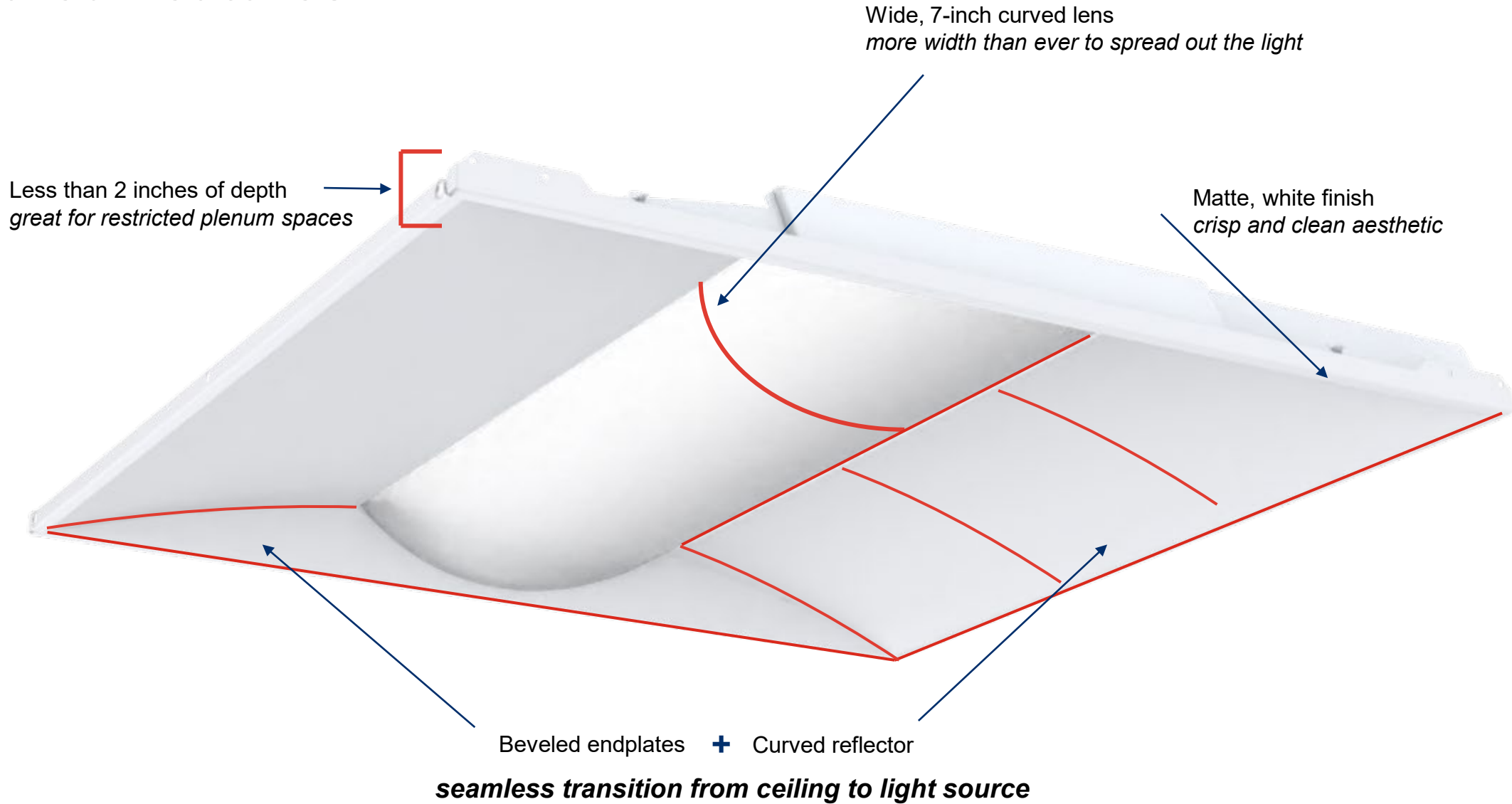


STACK



STACK Prime

Shared Features



Great for Multiple Applications

- K-12 Schools
- Higher education
- Commercial office
- Retail
- Healthcare facilities





2

Individual Performance Tiers

STACK Pack™

STACK Pack

The secret weapon for medium/large jobs

- What is STACK Pack?
 - A new way to attack larger projects
 - Same form factor lay-in + a shipping and materials saving innovation
 - Flexible for multiple mounting heights with three adjustable lumen output options
 - The most eco-conscious solution **ever**
 - 2x2 – 1 SKU = 1 box = 4 fixtures
 - Example: Quantity 5 = 20 fixtures
 - 2x4 – 1 SKU = 1 box = 2 fixtures
 - Example: Quantity 5 = 10 fixtures



2'x2' PACK 35K - STAKPAK 2X2 ALO3 35K CP4
2'x2' PACK 40K - STAKPAK 2X2 ALO3 40K CP4



Same aesthetics as STACK



ALO Switch right on driver box



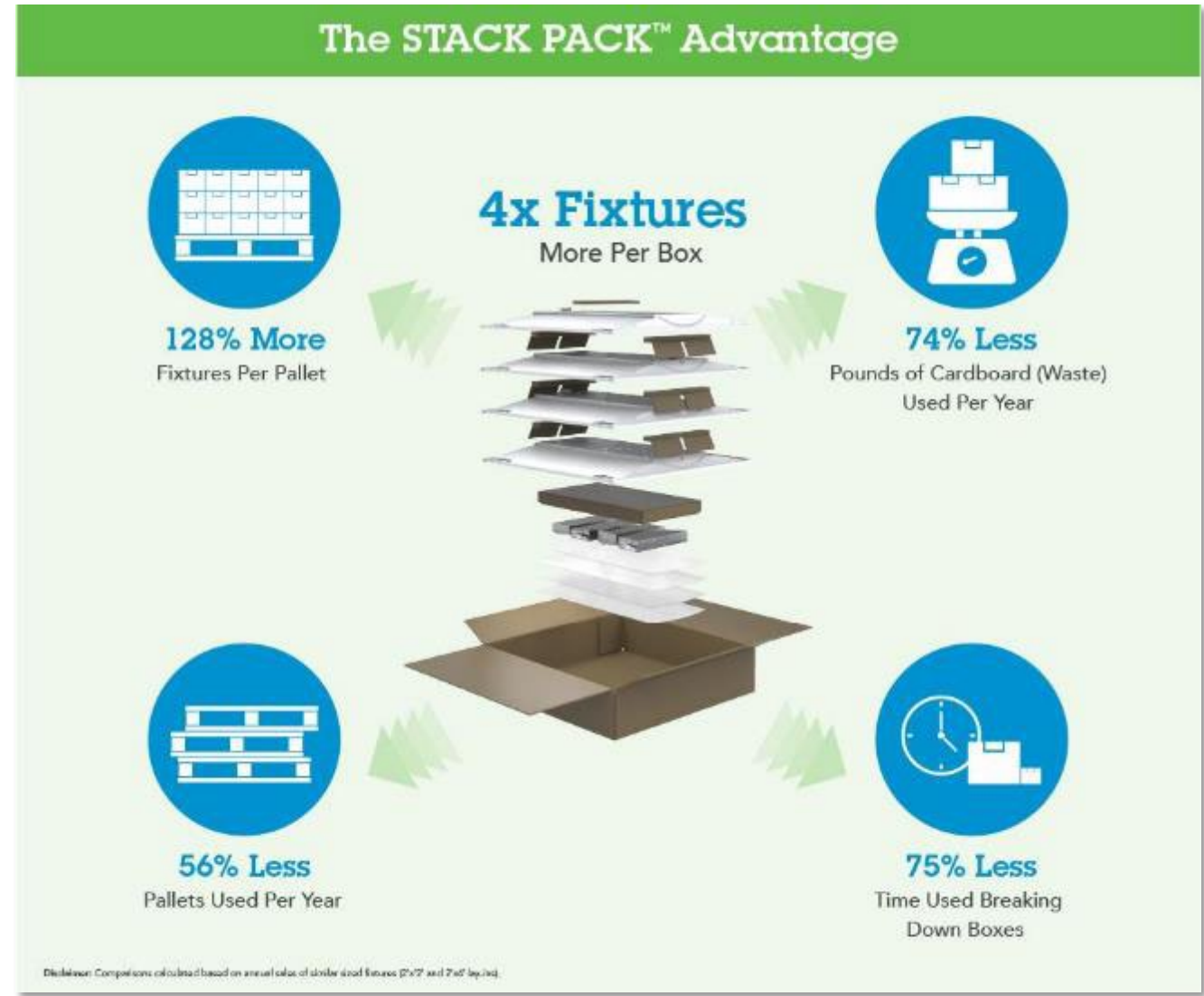
2'x4' PACK 35K - STAKPAK 2X4 ALO6 35K CP2
2'x4' PACK 40K - STAKPAK 2X4 ALO6 40K CP2

STACK Pack

Eco-friendly, jobsite-friendly

- Ordering **100 fixtures** used to mean breaking down 100 boxes, but with 2x2 STACK PACK, that is reduced to just **25 boxes**.
- By fitting more fixtures per box we are **reducing cardboard usage by 74%**.
- We can ship **128% more fixtures per pallet**, reducing pallets used per year by 56%.
- With four fixtures in one box, contractors spend **75% less of their time** breaking down and removing boxes on the jobsite.

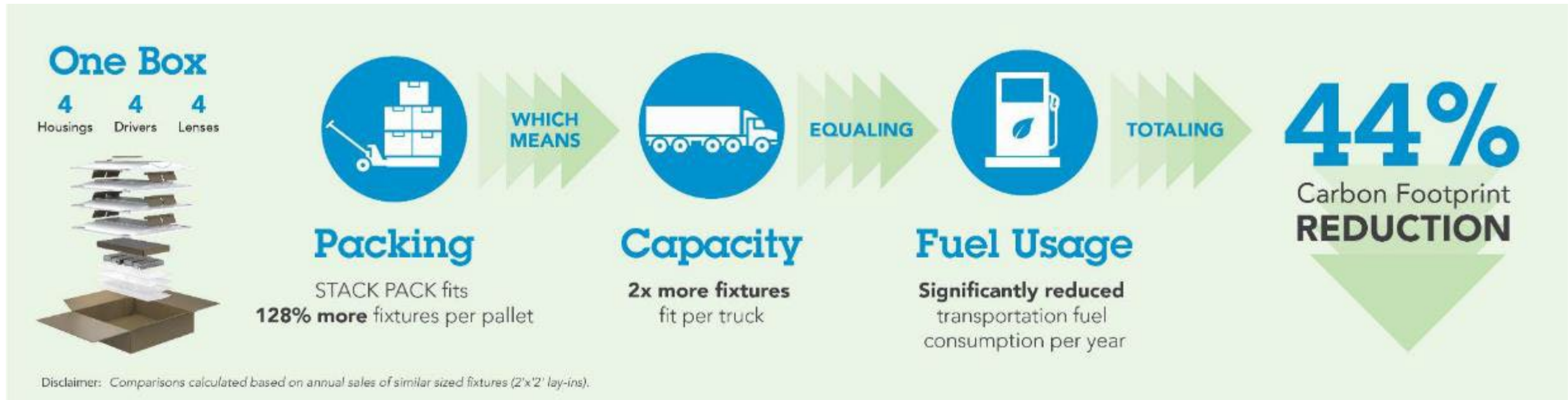
STACK PACK is transforming the way the industry tackles large projects



STACK Pack

Eco-friendly, jobsite-friendly

- By fitting **128% more fixtures per pallet**, we can fit **2x more fixtures on a truck**, which significantly reduces total fuel consumption. In shipping alone, we can potentially **reduce our carbon footprint by 44%** with STACK PACK.



STACK PACK is transforming the way
the industry tackles large projects

STACK Pack

Ideal performance

- **Who is STACK PACK perfect for?**
 - **Contractors & Electricians** – easy unpacking, assembling and installation
 - **ESCO's & Design Builders** – quality, reliable fixtures that are built for bulk orders



Item	Nomenclature	CI Code
2'x2' PACK 35K	STAKPAK 2X2 ALO3 35K CP4	*270PUC
2'x2' PACK 40K	STAKPAK 2X2 ALO3 40K CP4	*270PUF
2'x4' PACK 35K	STAKPAK 2X4 ALO6 35K CP2	*270PUJ
2'x4' PACK 40K	STAKPAK 2X4 ALO6 40K CP2	*270PUK

Are you asking yourself...

What if I want an odd quantity of fixtures?

I'm a distributor, are any versions of STACK better for stocking?

Introducing...

STACK Switch™



STACK Switch

The perfect stocking solution

- What is STACK Switch?
 - The ultimate stock solution
 - Same form factor lay-in + fully switchable technology you know and love
 - Flexible for multiple mounting heights with three adjustable lumen output options **AND** three switchable color temperatures
 - 9 SKUs are replaced by 1 ALO/SWW fixture
 - A part of the Contractor Select program, so you know it's always in stock and ready to ship
 - Available in 2x2, 2x4, 1x4 sizes
 - 1 SKU = 1 box = 1 fixture



2x2 & 2x4
in Contractor Select



Same aesthetics as STACK



ALO/SWW switches right on driver box





STACK Switch

Ideal performance

- Who's going to love it?
 - Distributors – 9 SKUs in one means less shelf space and more options
 - Contractors & Electricians – easy installation, ability to make game-time installation decisions by selecting the perfect lumen and color temperature for the space, less trips back and forth to the distributor
 - Specifiers – beautiful light distribution, DLC listed, always stocked and ready to ship



Item	Nomenclature	CI Code
2'x2' STACK Switch	 STAKS 2x2 ALO3 SWW7	*270PUL
2'x4' STACK Switch	 STAKS 2X4 ALO6 SWW7	*270PUM
1'x4' STACK Switch	STAKS 1X4 ALO6 SWW7	*270PUP

STACK Installation

Easy to assemble and install

- [View install video online](https://www.youtube.com/watch?v=n3s2hMgSkr4) – (https://www.youtube.com/watch?v=n3s2hMgSkr4)



Select switchable settings, insert the driverbox on the back of the fixture



Position the lay-in in the ceiling grid



Attached all 4 t-bar clips



You're good to go!



3

Available Now!

STACK™

STACK Prime™



STACK

The new gold standard

■ What is STACK?

- Highly configurable, namesake of the family
- Same form factor lay-in (from occupant viewpoint) + more options including
 - nLight® wired and wireless controls
 - SensorSwitch® JOT capabilities
 - Higher lumen options
 - 1% dimming



eldoLED



Ideal performance

■ Who's going to love it?

- Contractors & electricians – same easy install, great in restricted places, cost-effective
- Distributors – Unitized packaging design makes fulfilling small or odd qty. orders easy
- Specifiers & architects – easily integrate controls, great performance, configurability options, hits requirements like DLC Premium





STACK Prime

The premium option

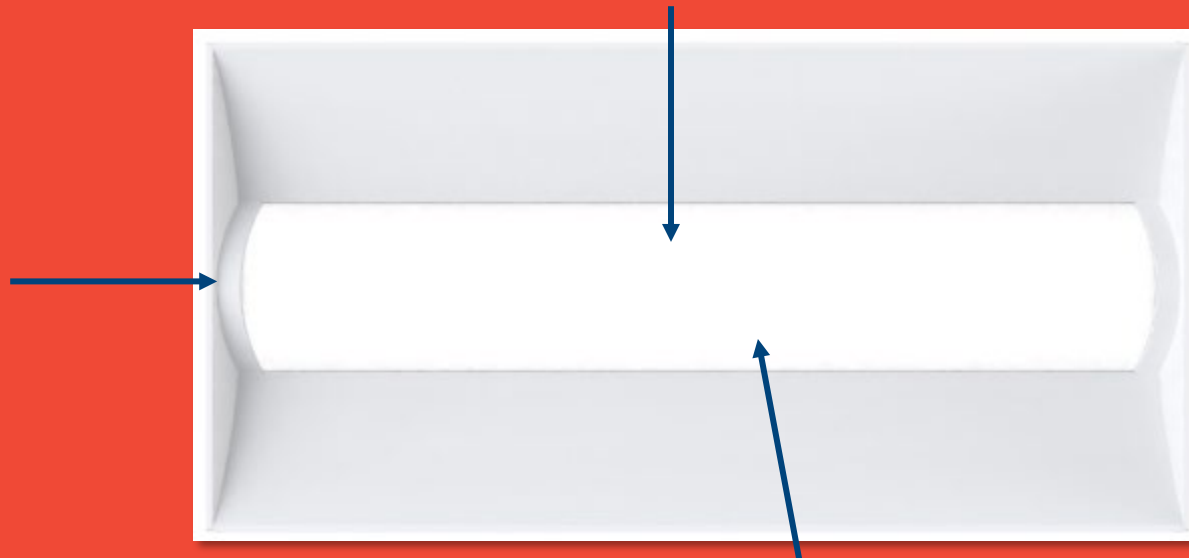
- **What is STACK Prime?**

- The top-tier in the family
- Different aesthetics, not offered in other versions of the STACK Family



Integrated trim rings set STACK Prime apart from the competition and create a more high-end aesthetic

Fully illuminated lens without bright spots



Quick change lens for easy cleaning





Family Chart

	ALO	SWW	Contractor Select	Perfect for Stocking	Sold in Multipacks	Perfect for Large Jobs	Perfect for Spec	Embedded Controls Options	1x4 , 2x2, 2x4 Options	Configurable
STACK Pack <i>The secret weapon</i>	<input checked="" type="checkbox"/>				<input checked="" type="checkbox"/>	<input checked="" type="checkbox"/>				
STACK Switch <i>The stock solution</i>	<input checked="" type="checkbox"/>	<input checked="" type="checkbox"/>	<input checked="" type="checkbox"/>	<input checked="" type="checkbox"/>					<input checked="" type="checkbox"/>	
STACK <i>The new gold standard</i>						<input checked="" type="checkbox"/>	<input checked="" type="checkbox"/>	<input checked="" type="checkbox"/>	<input checked="" type="checkbox"/>	<input checked="" type="checkbox"/>
STACK Prime <i>The premium solution</i>						<input checked="" type="checkbox"/>	<input checked="" type="checkbox"/>	<input checked="" type="checkbox"/>	<input checked="" type="checkbox"/>	<input checked="" type="checkbox"/>



Thank You!