



SERVICE PARTS LIST

BULLETIN NO.
54-22-2465

SPECIFY CATALOG NO. AND SERIAL NO. WHEN ORDERING PARTS		REVISED BULLETIN	DATE
M12™ Brushless Rotary Tool			Oct. 2023
CATALOG NO.	2525-20	WIRING INSTRUCTION	
SERIAL NO.	P06A	See Page 2	

EXAMPLE:

00 **0**
Component Parts (Small #)
Are Included When Ordering
The Assembly (Large #).

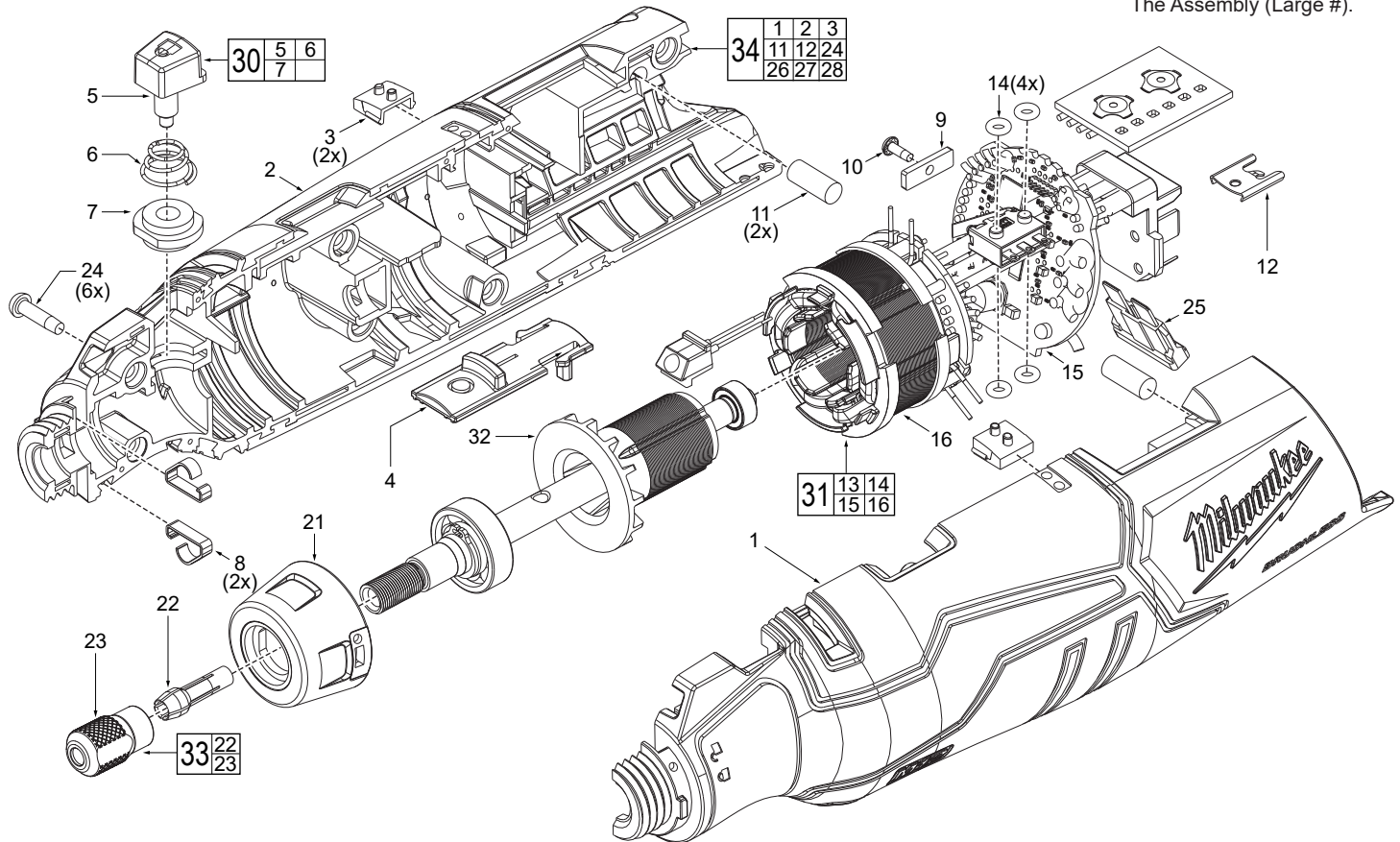


FIG.	PART NO.	DESCRIPTION OF PART	NO. REQ.
1	-----	Handle Support	(1)
2	-----	Handle Cover	(1)
3	31-12-0107	Light Pipe	(2)
4	31-84-0040	Power Slider	(1)
5	-----	Spindle Lock Assembly	(1)
6	-----	Tower Spring	(1)
7	-----	Sleeve	(1)
8	44-66-0216	Spring Plate	(2)
9	31-89-0250	Switch Retainer	(1)
10	06-82-7472	M2 x 6mm PH screw	(1)
11	45-30-0038	Rubber Slug	(2)
12	42-70-0058	Housing Connection Clip	(1)
14	34-40-0089	O-Ring	(4)
15	-----	PCBA	(1)
16	-----	Stator	(1)
21	42-76-0401	Nose Collar	(1)
22	-----	1/8" Collet	(1)
23	-----	Collet Nut	(1)
24	06-82-1087	M3 x 12mm PH Torx T-10 Screw	(6)
25	-----	Fuse	(1)
26	12-20-0454	Service Nameplate (not shown)	(1)

FIG.	PART NO.	DESCRIPTION OF PART	NO. REQ.
27	10-22-0319	Warning Label (not shown)	(1)
28	10-22-0932	Fuel Gauge Label (not shown)	(1)
30	14-46-0964	Spindle Lock Service Kit	(1)
31	14-20-0788	PCBA/Stator Service Assembly	(1)
32	14-50-0014	Rotor Service Assembly	(1)
33	14-46-0963	Collet Service Kit	(1)
34	14-38-0143	Housing Service Kit	(1)

FIG. NOTES

26,27, 28 A clean, dry surface is essential for proper performance for any adhesive system. The area intended for application of any adhesive label or nameplate must be prepared by cleaning with isopropyl alcohol. The solvent is to be applied with a clean, lint free applicator and the surface allowed to dry before applying the label or nameplate.

SCREW TORQUE SPECIFICATIONS

FIG.	PART NO.	WHERE USED	SEAT TORQUE	
			(kgf-cm)	(lb-in)
10	06-82-7472	Switch Retainer	2±1	2±1
24	06-82-0243	Handle	8±1	7±1

MILWAUKEE TOOL • www.milwaukeetool.com
13135 W. Lisbon Road, Brookfield, Wisc. 53005
Drwg. 1

WIRE ROUTING

