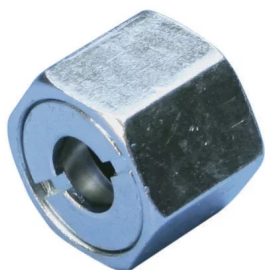




## NVENT CADDY ROD LOCK NUT, 3/8" ROD

### CATALOG NUMBER

**CRLN37EG**



### FEATURES

Easy "push-to-install" design allows installers to simply push the threaded rod through the mounting hole, instantly holding it in position

Fast installation onto long threaded rods - push the nut in place instead of threading it up the rod

Excellent alignment and easy fine adjustment by spinning the nut

Extremely useful in tight spaces where wrenches are difficult to use

### PRODUCT ATTRIBUTES

Material: Steel

Finish: Electrogalvanized

Rod Size: 3/8"

Height: 0.800"

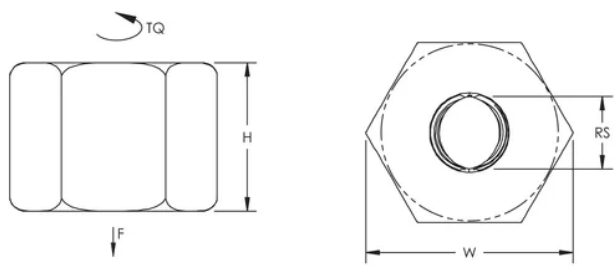
Width: 1.100"

Wrench Size: 15/16"

Torque: 5 ft lb

Static Load: 1,350 lb

DIAGRAMS



WARNING

nVent products shall be installed and used only as indicated in nVent's product instruction sheets and training materials. Instruction sheets are available at [www.nvent.com](http://www.nvent.com) and from your nVent customer service representative. Improper installation, misuse, misapplication or other failure to completely follow nVent's instructions and warnings may cause product malfunction, property damage, serious bodily injury and death and/or void your warranty.

North America

+1.800.753.9221  
Option 1 – Customer Care  
Option 2 – Technical Support

Europe

Netherlands:  
+31 800-0200135  
France:  
+33 800 901 793

Europe

Germany:  
800 1890272  
Other Countries:  
+31 13 5835404

APAC

Shanghai:  
+ 86 21 2412 1618/19  
Sydney:  
+61 2 9751 8500



Our powerful portfolio of brands:  
**nVent.com CADDY ERICO HOFFMAN RAYCHEM SCHROFF**  
**TRACER**