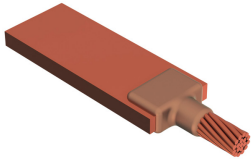


Cable to Lug or Busbar



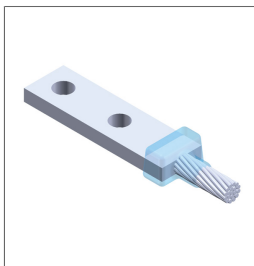
nVent ERICO Cadweld graphite molds are designed and engineered for thousands of connection styles and conductor combinations.

- Forms a permanent, low resistance connection
- Provides a molecular bond
- nVent ERICO Cadweld Exothermic Connections are rated with the same current capacity as the conductor
- Portable installation equipment with no external source of power required
- Installers can be easily trained to make nVent ERICO Cadweld Exothermic Connections
- Connections can be visually inspected
- Mold Families LA and LE can be used with straight or offset lugs
- Meets requirements of the Buy American Act

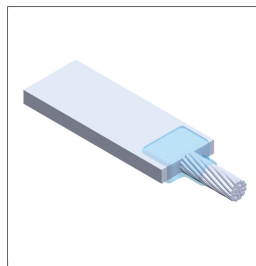
XX X XX XX L M W		
XX	Mold Family	
X	Price Key	
XX	Lug/Busbar Size	
XX	Conductor Code	
L*	Split Crucible	Crucible section is split on molds designed with horizontal opening for easier cleaning
M*	Mold Only	
W*	Wear Plates	Reduce mechanical abrasion of molds at cable entry points

* Empty if none

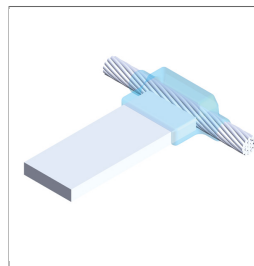
Mold Family



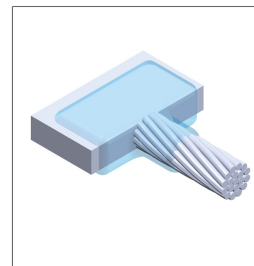
GL



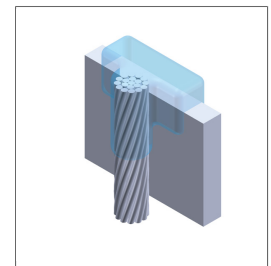
LA



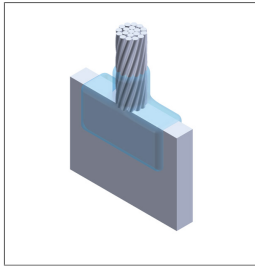
LE



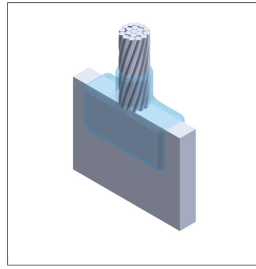
LJ



LL



LM



LR



Part Number	Mold Family	Lug/Busbar Size	Conductor Size	Conductor Outer Diameter, Nominal	Certifications
GLCEE2Q	GL	1/4" x 1"	4/0 Concentric	0.528"	cULus
GLCEEY7	GL	1/4" x 1"	150 mm ² Concentric	0.634"	-
GLCEEY8	GL	1/4" x 1"	185 mm ² Concentric	0.700"	-
GLCEE2V	GL	1/4" x 1"	250 kcmil Concentric	0.575"	cULus
GLCEE2W	GL	1/4" x 1"	250 kcmil Ropelay	0.750"	cULus
GLCEE3A	GL	1/4" x 1"	300 kcmil Concentric	0.630"	-
GLCEE3D	GL	1/4" x 1"	350 kcmil Concentric	0.681"	-
LAC1HEE	LA	1/4" x 1"	#6 Concentric	0.184"	cULus
LAC1GEE	LA	1/4" x 1"	#6 Solid	0.162"	cULus
LAC1LEE	LA	1/4" x 1"	#4 Concentric	0.232"	cULus
LAC1KEE	LA	1/4" x 1"	#4 Solid	0.204"	cULus
LAC1VEE	LA	1/4" x 1"	#2 Concentric	0.292"	cULus
LAC1WEE	LA	1/4" x 1"	#2 Ropelay	0.336"	cULus
LAC1TEE	LA	1/4" x 1"	#2 Solid	0.257"	cULus
LAC2C002	LA	1/4" x 1"	1/0 Concentric	0.373"	cULus
LAC2CEE	LA	1/4" x 1"	1/0 Concentric	0.373"	cULus
LAC2G002	LA	1/4" x 1"	2/0 Concentric	0.418"	cULus
LAC2GEE	LA	1/4" x 1"	2/0 Concentric	0.418"	cULus
LAC2GEEW	LA	1/4" x 1"	2/0 Concentric	0.418"	cULus
LAC2JEE	LA	1/4" x 1"	2/0 Ropelay	0.480"	cULus
LACS6EE	LA	1/4" x 1"	3/0 Composite	0.572"	cULus
LAC2LEE	LA	1/4" x 1"	3/0 Concentric	0.470"	cULus
LAC2Q002	LA	1/4" x 1"	4/0 Concentric	0.528"	cULus
LAC2QEE	LA	1/4" x 1"	4/0 Concentric	0.528"	cULus
LAC2QEEW	LA	1/4" x 1"	4/0 Concentric	0.528"	cULus
LAC2PEE	LA	1/4" x 1"	4/0 Solid	0.460"	cULus
LACSFEE	LA	1/4" x 1"	7/16" Stranded	0.437"	cULus
LACY2EE	LA	1/4" x 1"	35 mm ² Concentric	0.305"	-
LACY3EE	LA	1/4" x 1"	50 mm ² Concentric	0.354"	cULus
LACW6EE	LA	1/4" x 1"	50 mm ² Solid	0.315"	cULus
LACY4EE	LA	1/4" x 1"	70 mm ² Concentric	0.430"	cULus
LACY6EE	LA	1/4" x 1"	120 mm ² Concentric	0.567"	cULus
LACD7EE	LA	1/4" x 1"	200 mm ² Concentric	0.717"	-
LAC2VEE	LA	1/4" x 1"	250 kcmil Concentric	0.575"	cULus
LAC3AEE	LA	1/4" x 1"	300 kcmil Concentric	0.630"	-
LAC3AEEW	LA	1/4" x 1"	300 kcmil Concentric	0.630"	-
LAC3BEE	LA	1/4" x 1"	300 kcmil Ropelay	0.800"	-

Part Number	Mold Family	Lug/Busbar Size	Conductor Size	Conductor Outer Diameter, Nominal	Certifications
LAC3DEE	LA	1/4" x 1"	350 kcmil Concentric	0.681"	-
LAC3DEEW	LA	1/4" x 1"	350 kcmil Concentric	0.681"	-
LAC3HEE	LA	1/4" x 1"	400 kcmil Concentric	0.728"	-
LAC3QEE	LA	1/4" x 1"	500 kcmil Concentric	0.813"	-
LAC3QEEW	LA	1/4" x 1"	500 kcmil Concentric	0.813"	-
LAC9JEE	LA	1/4" x 1"	19/#6 Copperweld	0.810"	-
LAC9HEE	LA	1/4" x 1"	19/#7 Copperweld	0.721"	-
LAC9HEEW	LA	1/4" x 1"	19/#7 Copperweld	0.721"	-
LAC9GEE	LA	1/4" x 1"	19/#8 Copperweld	0.642"	-
LAC9FEE	LA	1/4" x 1"	19/#9 Copperweld	0.572"	cULus
LAC9FEEW	LA	1/4" x 1"	19/#9 Copperweld	0.572"	cULus
LAC9DEE	LA	1/4" x 1"	7/#6 Copperweld	0.486"	cULus
LAC9CEE	LA	1/4" x 1"	7/#7 Copperweld	0.433"	cULus
LAC8DEE	LA	1/4" x 1"	D Lightning Conductor	0.470"	cULus
LAC8GEE	LA	1/4" x 1"	G Lightning Conductor	0.528"	cULus
LEC1DEE	LE	1/4" x 1"	#8 Solid	0.128"	-
LEC2GEE	LE	1/4" x 1"	2/0 Concentric	0.418"	cULus
LEC2QEE	LE	1/4" x 1"	4/0 Concentric	0.528"	cULus
LEC2VEE	LE	1/4" x 1"	250 kcmil Concentric	0.575"	cULus
LJCEE1V	LJ	1/4" x 1"	#2 Concentric	0.292"	cULus
LJCEE1T	LJ	1/4" x 1"	#2 Solid	0.257"	cULus
LJCEE2L	LJ	1/4" x 1"	3/0 Concentric	0.470"	cULus
LJCEE2Q	LJ	1/4" x 1"	4/0 Concentric	0.528"	cULus
LJCEE3Q	LJ	1/4" x 1"	500 kcmil Concentric	0.813"	-
LLCEE1V	LL	1/4" x 1"	#2 Concentric	0.292"	-
LLCEE2Q	LL	1/4" x 1"	4/0 Concentric	0.528"	-
LMCEE1H	LM	1/4" x 1"	#6 Concentric	0.184"	-
LMCEE2C	LM	1/4" x 1"	1/0 Concentric	0.373"	-
LREEE2C	LR	1/4" x 1"	1/0 Concentric	0.373"	-

For applications such as computer room, tunnel or other low-ventilation areas, specify a smokeless nVent ERICO Cadweld Exolon mold. Add an XL prefix to the standard mold part number when ordering (for example, a TAC2Q2Q becomes XLTAC2Q2Q). Similarly, nVent ERICO Cadweld Exolon welding material is also designated by the XL prefix (for example, 150 becomes XL150).

A gap between conductors may be required. See mold tag for more information.

UL, UR, cUL, cUR, cULus and cURus are registered certification marks of UL LLC.

WARNING

nVent products shall be installed and used only as indicated in nVent's product instruction sheets and training materials. Instruction sheets are available at www.erico.com and from your nVent customer service representative. Improper installation, misuse, misapplication or other failure to completely follow nVent's instructions and warnings may cause product malfunction, property damage, serious bodily injury and death and/or void your warranty.

© 2020 nVent All rights reserved

nVent, nVent CADDY, nVent ERICO, nVent ERIFLEX and nVent LENTON are owned by nVent or its global affiliates.

All other trademarks are the property of their respective owners. nVent reserves the right to change specifications without prior notice.