

# NetKey™ Cabling System



# NetKey Cabling System

The NetKey Copper and Fiber Cabling System provides a complete, standards compliant solution for voice, data and video applications. NetKey Modules feature the universal “keystone” design and are compatible with a wide assortment of modular patch panels, faceplates, and surface mount boxes. When teamed with complementary Panduit products, the NetKey Solutions cover all your needs from the telecommunication room to the work area with the proven innovation and quality you depend on from Panduit.



# Table of Contents

---

NetKey Jack Modules, Copper Cable, and Patch Cords	4 - 6
NetKey Modular Patch Panels	7 - 8
NetKey Faceplates and NetKey Stainless Steel Faceplates	9 - 11
NetKey Audio/Video Modules and Inserts	11
NetKey Surface Mount Boxes and Furniture Faceplates	11
Shielded Keystone Jacks, Patch Panels, Copper Patch Cords, and Copper Cable	12 - 13
Termination Tools	13
Physical Security Devices	14
NetKey Fiber Optic Adapters	15
Racks and Cable Management	16 - 19



## NetKey Category 6A, 6, and 5e Jack Modules

- Meet industry performance standards for Category 6A, 6, and 5e
- Punchdown Jack Modules are 100% performance tested and individually serialized for future traceability
- Keystone punchdown jacks meet ANSI/TIA-568.2-D and ISO 11801 component requirements
- Snap in and out of keystone openings for easy moves, adds, and changes
- Universal label includes T568A and T568B wiring schemes

Part Number	Performance Level	Termination Style	Color**	Region
NK6X88M**+	Category 6A	Punchdown	BU (Blue), AW (Arctic White), BL (Black), EI (Electric Ivory), GR (Green), IG (International Gray), IW (International White), OR (Orange), RD (Red), VL (Violet), WH (White), YL (Yellow)	North America, Latin America, Europe, Middle East, Africa
NK688M**+	Category 6			
NKP5E88M**+	Category 5e			

\*\*Replace with color initial. Available color options may vary.

+Add -Q to indicate 25 pieces per package to reduce single use plastic



## NetKey Category 6A, 6, and 5e Unshielded Copper Cable

- Small diameter allows for improved pathway capacity, tighter bend radius and increased flexibility and ease during installation
- Third-party tested by an independent laboratory and complies with the electrical channel requirements of ANSI/TIA-568.2-D and ISO 11801
- Complies with IEEE 802.3af, IEEE 802.3at and IEEE 802.3bt for PoE applications

Part Number	Gauge (AWG)	Flammability Rating	Color**	Region
<b>Category 6A U/UTP 4 Pair Copper Cable</b>				
PUP6XHD04**-G	23	CMP	BU (Blue), WH (White), IG (International Gray)	North America
PUR6AHD04**-G		CMR		
NUC6X04BU-FEG		CM	Blue	Latin America, Asia Pacific
NUL6X04BU-VEG		LSZH (IEC 60332-1 and IEC 60332-3-22)		
NUL6X04BU-HEG		LSZH (IEC 60332-1), Dca-s2,d2,a1		Europe, Middle East, Africa
NUY6X04BU-HEG		LSZH (IEC 60332-1 and -3-22), Cca-s1a,d0,a1		
NUW6X04BU-HEG		LSZH (IEC 60332-1), B2ca-s1a,d1,a01		

\*\*Visit [panduit.com](http://panduit.com) for color options



## NetKey Category 6A, 6, and 5e Unshielded Copper Cable, continued

Part Number	Gauge (AWG)	Flammability Rating	Color**	Region
Category 6 U/UTP 4 Pair Copper Cable				
PUP6C04**-WZ	24	CMP	BU (Blue), WH (White), RD (Red), OR (Orange), YL (Yellow), GR (Green), VL (Violet), IG (International Gray), BL (Black)	North America
PUR6C04**-U	23	CMR		
NUC6C04BU-FE	24	CM	Blue	Latin America, Asia Pacific
NUL6C04BU-FE		LSZH (IEC 60332-1 and IEC 60332-3-22)		
NUR6C04BU-C		CMR		
NUV6C04BU-VE		PVC		
NUC6C04BU-FE		CM, Eca		Europe, Middle East, Africa
NUZ6C04BU-KE		LSZH (IEC 60332-1 and -3-22), Dca-s2,d2,a1		
NUY6C04BU-FE		LSZH (IEC 60332-1), Cca-s1a,d1,a1		
Category 6 U/UTP 4 Pair Copper Cable - Reduced Diameter				
NUC6CR04BU-CE	24	CM	Blue	Latin America, Asia Pacific
NUL6CR04BU-CE		LSZH (IEC 60332-1), Eca		Latin America, Europe, Middle East, Africa
Category 5e U/UTP 4 Pair Copper Cable				
PUP5C04**-F	24	CMP	BU (Blue), WH (White)	North America
PUR5C04**-F		CMR		
NUC5C04BU-CE		CM	Blue	Latin America, Asia Pacific
NUL5C04BU-CE		LSZH (IEC 60332-1), Eca		Latin America, Europe, Middle East, Africa
NUR5C04BU-C		CMR		Latin America, Asia Pacific

\*\*Visit [panduit.com](http://panduit.com) for color options



NUC6C04BU-FE



NUC6CR04BU-CE

NetKey Category 6A, 6, and 5e U/UTP Copper Patch Cords

- Meet industry performance standards for Category 6A, 6, and 5e
  - 100% Performance tested
- Available in a variety of colors and lengths for design flexibility

Part Number	Lengths^	Color**	Region
Category 6A			
NK6APC^***	1 – 20 feet (every 1 feet) 25, 30, 40, or 50 feet	Leave Blank (Off White) BU (Blue), BL (Black), RD (Red), YL (Yellow), GY (Gray), GR (Green), OR (Orange), VL (Violet)	North America, Latin America, Europe, Middle East, Africa
NK6APC^M**	1 – 5 meters (every 1 meters) 7, 10, 15, or 12 meters		
NKU6APC^M**	1 – 5 meters (every 1 meters) 7 or 10 meters	Leave Blank (Off White) BU (Blue), BL (Black), GR (Green), RD (Red), YL (Yellow)	Asia Pacific
Category 6			
NK6PC^***Y	1 – 20 feet (every 1 feet) 25, 30, 35, 40, 45, or 50 feet	Leave Blank (Off White) BU (Blue), BL (Black), RD (Red), YL (Yellow), GY (Gray), GR (Green), OR (Orange), VL (Violet)	North America, Latin America, Europe, Middle East, Africa
NK6PC^M**Y	1 – 5 meters (every 1 meters) 7, 10, 15, or 20 meters		
NKU6PC^***	1 – 10 feet (every 1 feet) 15, 20, or 25 feet	Leave Blank (Off White) BU (Blue), BL (Black), GR (Green), RD (Red), YL (Yellow)	Asia Pacific
NKU6PC^M**	1 – 5 meters (every 1 meters) 7 or 10 meters		
Category 5e			
NK5EPC^***Y	3, 5, 7, or 10 feet	BU (Blue), Leave Blank (Off White), BL (Black), RD (Red), YL (Yellow), GY (Gray), GR (Green), OR (Orange), VL (Violet)	North America, Latin America, Europe, Middle East, Africa
NK5EPC^M**Y	1, 2, 3, or 5 meters	BU (Blue), Leave Blank (Off White), BL (Black), YL (Yellow), GR (Green)	

^Replace with length numeral  
\*\*Replace with color initial  
Available length and color options may vary



NK6APC3MBU



NK5EPC3BUY

## NetKey Patch Panels and Accessories

- Modular patch panels accept NetKey modules, which snap in and out for easy moves, adds, and changes
- Angled style facilitates proper bend radius control and minimizes the need for horizontal cable managers
- Select modular patch panels have a front access design that includes faceplates with easy snap release feature

### Modular Patch Panels

Part Number	Ports	Style	Identification	Design	RU	Region
Front Access						
NKFP24Y	24	Flat	Adhesive	Front Access	1	Global
NKFP48Y	48				2	
NKFPL24	24		Label		1	
NKFPL48	48				2	
NKFPA24	24	Angled	Adhesive		1	
NKFPA48	48				2	
NKFPAL24	24		Label		1	
NKFP12W	12	–	Adhesive		–	
Flush Mount						
NKPP24FMY	24	Flat	Adhesive	Flush Mount	1	Global
NKPP48FMY	48				2	
NKPPA24FMY	24	Angled			1	
NKPPA48FMY	48				2	
NKPP48HDY	48	Flat			1	
NKPPA48HDY	48	Angled			1	



NKFP24Y



NKFPL24



NKPP48FMY



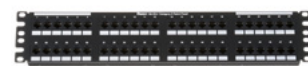
NKPPA48FMY

### Punchdown Patch Panels

Part Number	Ports	Style	Identification	RU	Region
Category 6A					
NK6XPPG24Y	24	Flat	Adhesive	1	North America, Latin America, Europe, Middle East, Africa
NK6XPPG48Y	48			2	
Category 6					
NK6PPG24Y	24	Flat	Adhesive	1	North America, Latin America, Europe, Middle East, Africa
NK6PPG48Y	48			2	
Category 5e					
NK5EPPG24Y	24	Flat	Adhesive	1	North America, Latin America, Europe, Middle East, Africa
NK5EPPG48Y	48			2	



NK6XPPG24Y



NK6XPPG48Y

Patch Panel Accessories

Part Number	Description	Region
SRB19BLY	Strain Relief Bar, extended 2 in. deep	Global
SRB19D5BL	Strain Relief Bar, extended 5 in. deep with inward tabs	
SRBBRKT	Mounting Bracket for strain relief bars	
CNSRBKIT-C	Cage Nut Kit for strain relief bars	
DPFP1	Filler Panel, 1 RU	
DPFP2	Filler Panel, 2 RU	
CPAF1BLY	Angled Filler Panel, 1 RU	
CPAF2BLY	Angled Filler Panel, 2 RU	
CPATCBL	Transition cover	



SRB19BLY



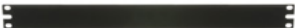
SRB19D5BL



SRBBRKT



CNSRBKIT-C



DPFP1

## NetKey Faceplates

- Accept all NetKey Modules
- Replacement label/label covers available for select products
- Non-label faceplates include screws with matching color head screws

Part Number	Ports	Style	Size (mm)	Identification	Color**	Region			
NK1F**Y	1	Flat	69.8 x 114.3	Label Pockets	BL (Black), EI (Electric Ivory), IG (International Grey), IW (Off White), WH (White)	Global			
NK2F**Y	2								
NK4F**Y	4								
NK6F**Y	6								
NK8F**	8								
NK4VSF**	4	Vertical, Sloped							
NK4HSF**Y		Horizontal, Sloped							
NK1FN**	1	Flat		Adhesive	EI (Electrical Ivory), IW (Off White), WH (White)				
NK2FN**	2								
NK3FN**	3								
NK4FN**	4								
NKFPLUKF1SAW	1	Flat, Shuttered	86 x 86			Europe, Middle East, Africa			
NKFPLUKF2SAW	2								
NKFPLUKF4SAW	4								
NKUKS2AW	2	Sloped							
NKUKS2SAW		Sloped, Shuttered							
NKUKS4SAW-2G	4	Sloped Shuttered	86 x 146	Label Pockets	Arctic White	Europe, Middle East, Africa, Asia Pacific			
NKFPL86F1SAW	1	Flat, Shuttered	86 x 86						
NKFPL86F2SAW	2								
NKFPL86F4SAW	4								

\*\*Color options vary by region. Visit [panduit.com](http://panduit.com) for more color option information.



NK1FIWY



NK2FIWY



NK4FIWY



NK6FIWY



NK8FIW



NK4VSFIW



NK4HSFIWY



NK1FNIW



NK2FNIW



NK3FNIW



NK4FNIW



NKFPL86F1SAW



NKFPL86F2SAW



NKFPL86F4SAW

## NetKey Stainless Steel Faceplates

- Impact-resistant 304 stainless steel for light industrial environments

Part Number	Ports	Style	Identification	Region
NKF2S	2	Flat	Label Pockets	North America, Latin America
NKF4S	4			
NKF6S	6			



NKF2S



NKF4S



NKF6S

## Phone Faceplates

Part Number	Ports	Style	Performance Level	Region
KWPY	1	Empty	–	Global
KWPK6		Punchdown	Category 6	
KWPK5E			Category 5e	

Note: Compatible with wall mountable phones with short patch cord connections to the jack module



KWPY



KWPK6

## NetKey Adapters

Part Number	Ports	Style	Identification	Region
NKFA1SAW-X	1	Flat, Shuttered	Label Pockets	Europe, Middle East, Africa, Asia Pacific
NK6CSAW-X		Sloped, Shuttered		
NKFS2AW		Sloped		
NKFS2SAW	2	Sloped, Shuttered	Label Pockets	Europe, Middle East, Africa, Asia Pacific
NKFS2SAW	2	Sloped, Shuttered		

Note: Compatible with wall mountable phones with short patch cord connections to the jack module



NKFA1SAW-X



NK6CSAW-X



NK6CSAW-X



NKFS2AW



NKFS2SAW

## NetKey Furniture Faceplates

- Compatible with standard furniture opening

Part Number	Ports	Style	Identification	Color**	Region
NK4MF**	4	Flat	Adhesive	BL (Black)	Global
NK4MFLBL			Label Pockets		

\*\*Visit [panduit.com](https://panduit.com) for more color option information



NK4MFLBL

## NetKey Faceplate Adapters

Part Number	Ports	Size (mm)	Style	Identification	Region
NK2RMFIW	2	-	GFCI	-	North America, Latin America
NK4RMFIW	4				
NK2106MFIW	2		106		
NK4106MFIW	4				



NK4RMFIW



NK4106MFIW

## NetKey Audio/Visual Modules and Inserts

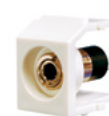
Part Number	Description	Color**	Region
<b>Modules</b>			
NKF**	Keystone F-type 3 Ghz coupler module	AW (Arctic White), BL (Black), EI (Electric Ivory), IG International Gray), IW (International White), WH (White)	Global
NK35MSS**	Keystone 3.5mm (1/8 in.) stereo solder type headset connector		
NKHDMI**	Keystone HDMI 2.0 Type A female to female coupler module		
NKUSBAA**	Keystone USB 2.0 female A to female A coupler		
NKBM**-X	Blanks out 1-Port		

\*\*Replace with color initial

-X indicates available bulk options of 10 pieces per package to reduce single-use plastic



NKFIW



NK35MSSIW



NKHDMIW



NKUSBAAIW



NKBMIW-X

## NetKey Surface Mount Boxes

- Mount easily with supplied mounting screws, adhesive tape, or optional magnet
- Cable entry from side knockouts

Part Number	Ports	Style	Identification	Color**	Region
NK2BX**-A	2	Elongated	Adhesive	IW (Off White), EI (Electric Ivory), WH (White), IG (International Gray), BL (Black)	Global
NK4BX**-AY	4				
NK6BX**-AY	6	Elongated with Fiber Spool	Label Pockets		

\*\*Replace with color initial



NK2BXIW-A



NK6BXIW-AY



NK4BXIW-AY

Shielded Keystone Jacks

Part Number	Performance Level	Termination Style	Color	Region
SKJ6X88BL	Category 6A	Punchdown	Black	Global
SKJ6X88BL-C				
SKJ688BL	Category 6			
SKJ688BL-C				

Note: Compatible with Shielded Keystone Patch Panels, NetKey Outlets, and NetKey Patch Panels with proper bonding/grounding.  
-C indicates available bulk options of 100 pieces per package to reduce single-use plastic



SKJ6X88BL



SKJ688BL

Shielded Keystone Patch Panels

Part Number	Ports	RU	Style	Identification	Region
SKPP24BL	24	1	Flat	Label	Latin America, Europe, Middle East, Africa, Asia Pacific
SKPPA24BL			Angled		

Note: For use with Keystone shielded jacks only



SKPP24BL



SKPPA24BL

Shielded Copper Patch Cords

Part Number	Performance Level	Conductor Gauge (AWG)	Cable Diameter in. (mm)	Lengths^	Color**	Jacket Type	Region
S6XPC^M**	Category 6A	26	0.232 (5.9)	1 – 10 meter (every 1 meter) 15 meters	BU (Blue), IG (International Gray), Blank (Off White)	LSZH	Latin America, Europe, Middle East, Africa, Asia Pacific
S6PC^M**	Category 6			1 – 3.5 meters (every 0.5 meter) 5 – 15 meters (every 5 meters)			

\*\*Visit [panduit.com](https://panduit.com) for color options

^Visit [panduit.com](https://panduit.com) for length options



STP6X3MIG

## NetKey Shielded Copper Cable

- Small diameter allows for improved pathway capacity, tighter bend radius and increased flexibility and ease during installation
- Third-party tested by an independent laboratory and complies with the electrical channel requirements of ANSI/TIA-568.2-D and ISO 11801
- Complies with IEEE 802.3af, IEEE 802.3at and IEEE 802.3bt for PoE applications

Part Number	Gauge (AWG)	Flammability Rating	Color*	Region
Category 6A F/UTP 4 Pair Copper Cable				
PFP6X04**-UGZ	23	CMP	Blue	North America
PFR6X04**-CGZ		CMR		
NFL6x04**-FEG	24	LSZH-1		Europe, Middle East, Africa
NFY6x04**-FEG		LSZH-1 AND -3		
NFC6x04BU-FEG		CM		Latin America, Asia Pacific
NFL6x04BU-FEG		LSZH-1		
Category 6 F/UTP 4 Pair Copper Cable				
PFP6C04**-UG	23	CMP	Blue	North America
PFR6C04**-UG		CMR		
NFL6C04**-FEG	24	LSZH-1		Europe, Middle East, Africa
NFY6C04**-FEG		LSZH-1 AND -3		
NFC6C04BU-FEG		CM		Latin America, Asia Pacific
NFL6C04BU-FEG		LSZH-1		

\*\*Visit [panduit.com](http://panduit.com) for color options



PFP6X04BU-UGZ



NFY6X04xx-FEG



NFC6X04xx-FEG



NFL6C04xx-FEG



NFY6C04xx-FEG



NFC6C04xx-FEG

## Termination Tools

Part Number	Description	Region
<b>Pan-Punch™ Termination Tool</b>		
PDT110	Single pair punchdown tool and blade	North America, Latin America, Europe, Middle East, Africa
PDT110	Replacement blade for single pair punchdown tool (PDT110)	
NKSPB	Base used to assist in terminating punchdown modules	



PDT110



NKSPB

## Lock-In Devices

- Prevents unauthorized removal of patch cord, VoIP phone, other networking equipment of critical connection.
- Compact testing does not interfere with adjacent jack modules, including high density applications
- Requires key to lock and unlock
- Locking mechanism is white for standard and clear for recessed devices.

Part Number	Type	Qty. Devices	Qty. Keys	Color**	Region
PSL-DCPLE**	Standard	10	1	-BL (Black), -BU (Blue), -GR (Green), -YL (Yellow), -OR (Orange), IW (International White), -IG (International Gray)	Global
PSL-DCPLE**-C		100	5		
PSL-DCPLRE**	Recessed	10	1		
PSL-DCPLRE**-C		100	5		

\*\*Replace with color initial

-C indicates available bulk options of 100 pieces per package to reduce single-use plastic



PSL-DCPLE



PSL-DCPLRE

## Block-Out Devices

- Blocks unauthorized access and protects jack modules from foreign objects
- Compatible with most RJ45 jack modules and does not interfere with jack contacts
- Does not interfere with adjacent jack modules or hardware
- Requires key to remove

Part Number	Type	Qty. Devices	Qty. Keys	Color**	Region
PSL-DCJB**	RJ45	10	1	-BL (Black), -BU (Blue), -GR (Green), -YL (Yellow), -OR (Orange), IW (International White), -IG (International Gray)	Global
PSL-USBA^	USB Type A	5 or 50			
PSL-USBB	USB Type B	10			
PSL-LCAB	LC				

\*\*Replace with color initial

^Replace with -V for bulk packages of 5 or -L for bulk packages of 50 to reduce single use plastic



PSL-DCJB



PSL-USBA



PSL-USBB



PSL-LCAB

## SmartKeeper Block-Out Devices

- Unique blocking mechanism to prevent unauthorized access to open ports, saving time and money associated with network downtime
- Includes devices for a variety of ports, USB Type C, USB Type A and RJ45
- One Master Key controls multiple devices (sold separately)
- USB type A device mounts flush with the port

Part Number	Type	Color	Region
SKMKEY	Master Key	Gray	Global
SKRJ45RD-X	RJ45	Red	
SKUSBA-V	USB Type A		
SKUSBC	USB Type C		

-X indicates available bulk options of 10 pieces per package to reduce single-use plastic

-V indicates available bulk options of 50 pieces per package to reduce single-use plastic



SKMKEY



SKRJ45RD-X



SKUSBA-V



SKUSBC

## NetKey Fiber Optic Patch Cords and Pigtails

- Compliant with ANSI/TIA 568-D.3-1 and ISO/IEC 11801
- 100% Performance testing assures that patch cords and pigtails are standards compliant
- Q.C. identification label quality control reference provides lifetime traceability of test data

Part Number	Performance	Connectorization	Jacket	Region
9µm Singlemode Patch Cords				
NKFP92ERLLSM**	OS2	Duplex LC to Duplex LC	OFNR (Riser)	Europe, Middle East, Africa
NKFP92ERLSSM**		Duplex LC to Duplex SC		
NKFP923RSSSM**		Duplex SC to Duplex SC		
NKFP923R22SM**		ST to ST		
50µm Multimode Patch Cords				
NKFPX2ERLLSM**	OM3	Duplex LC to Duplex LC	OFNR (Riser)	Europe, Middle East, Africa
NKFPX2ERLSSM**		Duplex LC to Duplex SC		
NKFPX23RSSSM**		Duplex SC to Duplex SC		
NKFPX23R22SM**		ST to ST		
NKFPZ22RLLSM**	OM4	Duplex LC to Duplex LC		
9µm Singlemode Pigtail Cords				
NKFP91BN1NNM**	OS2	LC to 900µm Pigtail	–	Europe, Middle East, Africa
NKFP91BN3NNM**		SC to 900µm Pigtail		
NKFP91BN2NNM**		ST to 900µm Pigtail		
50µm Multimode Pigtail Cords				
NKFPX1BN1NNM**	OM3	LC to 900µm Pigtail	–	Europe, Middle East, Africa
NKFPX1BN3NNM**		SC to 900µm Pigtail		
NKFPX1BN2NNM**		ST to 900µm Pigtail		
NKFPZ1BN1NNM**	OM4	LC to 900µm Pigtail		
9µm Singlemode Pigtail Kits				
NKFP91BN1NKM**	OS2	12-Color LC to 900µm Pigtail Set	–	Europe, Middle East, Africa
50µm Multimode Pigtail Kits				
NKFPX1BN1NKM**	OM3	12-Color LC to 900µm Pigtail Set	–	Europe, Middle East, Africa

\*\*Visit [panduit.com](http://panduit.com) for available length options



NKFP92ERLLSM005



NKFP923RSSM005



NKFPZ22RLLSM015



NKFP91BN1NNM001



NKFPX1BN1NNM001



NKFP91BN1NKM002



NKFPX1BN1NKM002

### 4-Post Cable Management Rack System

- Independently adjustable front and rear mounting rails can be adjusted while the rack is secured to the floor
  - Printed rack space identification on all equipment rails allows for quick location of rack spaces (shipped numbers up per TIA-606 specifications; can be set to number down by flipping the rails)
  - Multiple mounting holes in top flanges for securing overhead pathways
- Weld nut construction eliminates the need for a second wrench increasing speed and ease of assembly
  - Vertical cable managers mount directly to the 4-Post Rack at any of the four corners
  - Paint piercing washers included to electrically bond rack for simplified grounding

Part Number	Height in. (mm)	Width in. (mm)	Depth in. (mm)	RU	Equipment Rails	Load Capacity lbs.	Color+	Region
R4P^*+	84 (2134)	23.3 (591)	30.0 and 36.0 (584 and 762)	45	#12-24 Threaded	2500	Black, White	North America, Latin America, Europe, Middle East, Africa
R4P^CN+			23.0, 30.0, 36.0, and 42.0 (582, 762, 914, and 1054)		Cage Nut			

\*Heights: 96 in. (8 ft.)  
^Depths other than 30 in.: 23, 36, 42  
+Add WH for White



R4P

### Adjustable Depth 4-Post Rack System

- Supports equipment mounting depths from 23 inches to 42 inches in 0.5-inch increments
  - Constructed from heavy-duty steel which provides a sturdy and durable platform for equipment
  - Compatible with accessories including power distribution, unit brackets, vertical tie-off panels, and shelving
- Includes grounding and bonding features that prevent damage from electrical surges and ensure equipment operates reliably

Part Number	Height in. (mm)	Width in. (mm)	Depth in. (mm)	RU	Equipment Rails	Color+	Region
AR4P*+	84.1 and 96.1 (2136.9 and 2441.7)	20.31 (515.9)	23.0 to 42.0 (584.2 to 1066.8)	45 and 52	#12-24 Threaded	Black, White	North America, Latin America, Europe, Middle East, Africa
AR4PCN*+					Cage Nut		

\*Heights: 96 in. (8 ft.)  
+Add WH for White



AR4P

## 2-Post Cable Management Rack System

- Printed rack space identification on all equipment rails allows for quick location of rack spaces; numbers up per TIA-606 specifications
- Double-sided #12-24 EIA universal mounting hole spacing
- Can be used with all cable management and patch panel products in addition to any industry standard 19-inch components
- 24 #12-24 mounting screws included
- Multiple mounting hole locations in each base angle
- Paint piercing washers included to electrically bond rack for simplified grounding; for the complete grounding solution, StructuredGround™ Kits for racks, visit [panduit.com](https://panduit.com)

Part Number	Height in. (mm)	Width in. (mm)	Depth in. (mm)	RU	Equipment Rails	Load Capacity lbs.	Color	Region
R2P*	84.0 (2134)	20.3 (516)	2.0 (76)	45	#12-24 Threaded	1000	Black	North America, Latin America, Europe, Middle East, Africa
R2P6S*			6.0 (152)			1500		

\*Heights: 96 in. (8 ft.)



R2P

## Rack Mount Shelves

- Mounting hardware included
- Vented shelves provide better heat distribution for active equipment

Part Number	Description	Height in. (mm)	Width in. (mm)	Depth in. (mm)	RU	Material	Load Capacity lbs.	Color	Region
SRM19FM1	2-Post Rack mount shelf	1.7 (44.0)	19.0 (483.0)	15.2 (385.0)	1	Steel	30	Black	North America, Latin America
RSHLF	4-Post Rack mount shelf			30.0 (762.0)			75		



RSHLF

## PatchLink™ Horizontal Cable Managers

- Lightweight plastic construction provides durability and easy installation
- Dual hinged cover allows cable access without removing cover
- Rounded edges on fingers protect cables from snags and damage to cable
- Flexible fingers allow easy installation and removal of cables
- Pass-through holes allow front to rear cabling
- Covers and #12-24 mounting screws included

Part Number	Height in. (mm)	Width in. (mm)	Depth in. (mm)	RU	Single/Dual Sided	Color	Region
WMP1E	3.5 (89)	19.0 (483.0)	8.9 (226)	2	Dual	Black	Global
WMPF1E			3.7 (94)		Single		
WMPH2E			8.9 (226)		Dual		
WMPFSE	1.7 (44)		2.7 (69)	1	Single		
WMPSE			8.9 (226)		Dual		
WMPHF2E	3.5 (89)		3.7 (94)	2	Single		
WMPLESE	1.7 (44)		2.7 (69)	1			
WMPHSE			7.9 (200)		Dual		



WMP1E

## NetRunner™ Vertical Cable Management System

- Integral cable retainers on the end of each finger provide easy access to route cables between fingers
- Bend radius fingers align with rack spaces to support cables as they transition to the vertical pathway
- Dual hinged covers can be opened 110° to the left or right to provide complete access to the cables inside the vertical pathway
- Vertical managers include hinged covers, mounting brackets, and #12-24 screws

Part Number	Height in. (mm)	Width in. (mm)	Depth in. (mm)	RU	Single/Dual Sided	Color	Region
WMPV45E	83.0 (2108)	4.9 (125)	12.0 (306)	45	Dual	Black	Global
WMPVF45E			6.5 (165)		Single		
WMPVHC45E		6.7 (17)	14.1 (357)		Dual		
WMPV22E	41.5 (1054)	4.9 (125)	12.0 (306)	22	Dual		
WMPVHCF45E	83.0 (2108)	6.7 (17)	7.6 (192)	45	Dual		



WMPV45E

Grounding

Part Number	Height in. (mm)	Region
RGS134-1Y	Rack grounding strip provided with 5cc of antioxidant, one grounding sticker, and three M6 x 12mm and #12-24 x 1/2 in. thread-forming screws. Dimensions: 78.65 in. (2mm) L x 0.67 in. (17mm) W x 0.05 in. (1.27mm) D.	North America, Latin America, Europe, Middle East, Asia
GPQC10-10	Access floor grounding clamp for 7/8 in. square, 1 in. round, and 1-1/8 in. round pedestals.	
RGCBNJ660P22	Jumper Kits, Common Bonding Network (CBN), #6 AWG (16mm <sup>2</sup> ) Jumper, 60 in. (1.52m) L.	



RGS134-1Y



GPQC10-10



RGCBNJ660P22

# Making the connections that matter.

We have the knowledge and experience to help you make the most of your infrastructure investment.

[panduit.com](https://panduit.com)



Let's connect  
[panduit.com/contact-us](https://panduit.com/contact-us)

**PANDUIT®**  
infrastructure for a connected world

