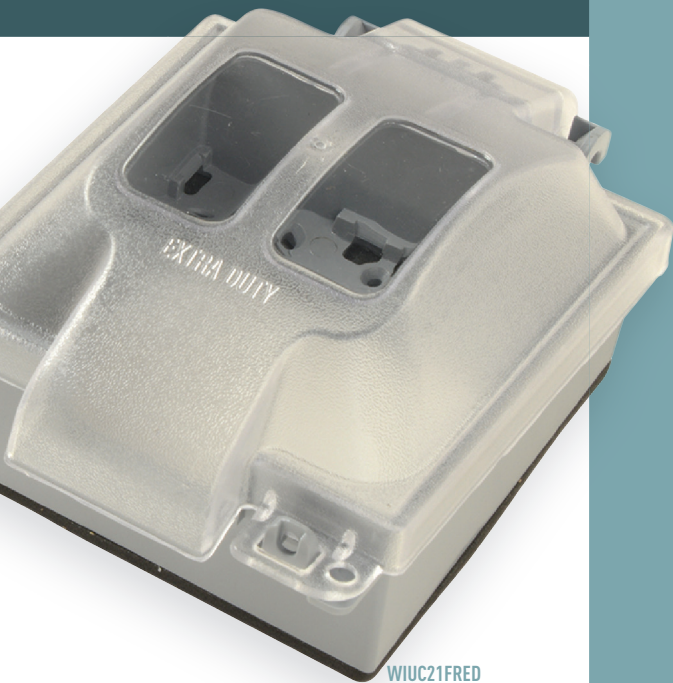


# EXTRA-DUTY WHILE-IN-USE COVER AND PLATE KITS



Extra heavy-duty weatherproof cover withstands the toughest of conditions and ensures protection for electrical devices. They provide generous interior room to accommodate bends in even the heaviest cords. Lockable cover prevents tampering, and delivers excellent weather resistance thanks to neoprene-blend gasketing, a cord flap seal and our exclusive WaterShed™ channel. The large center opening to the base better accommodates the plate kits with increased center opening adaptors for larger plugs and connectors that are used in the field. The plate kit addition also offers wider applications with the inclusion of duplex, round, and GFCI adaptor inserts for both single and two-gang covers.

## Features & Benefits

- Trigger latch opens easily with one finger, yet lockable to prevent tampering.
- Pre-assembled with gasket for easier installation, saving time and preventing incorrect gasket placement.
- Extra-duty rating
- Frosted polycarbonate construction resists impacts and harsh weather while hiding dirt.
- Roomy interior provides space for plugs and cord bends.
- Snap-in device plates require no tools to install and won't fall out of cover, cutting installation time.
- Large center opening to base
- Increased center opening adaptor insert plates for 1G and 2G covers (duplex, round, GFCI)

## Market Applications

- Residential
- Commercial Offices
- Retail
- Health Care
- Education
- Hospitality
- Multiple Dwelling Units

## Tech Specs

### 3<sup>rd</sup> Party Compliance

- cULus Listed, File # E332841
- Covers Conform to NEMA 3R
- Complies with 2014 NEC® Section 406.9 (B)(1), 590.4 (D)(2)

## Materials

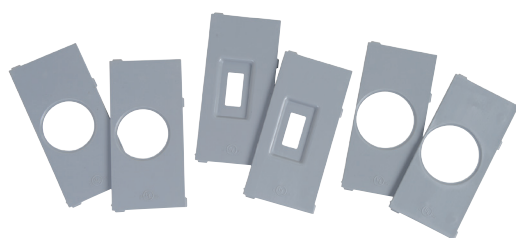
- Body
- Cover/ Cover Finish
- Gasket
- Insert Plate
- Polycarbonate/ Frosted
- Screws
- Tri-Drive Zinc
- Polyethylene Foam

## Performance

### Environmental

- Weatherproof for Wet Locations

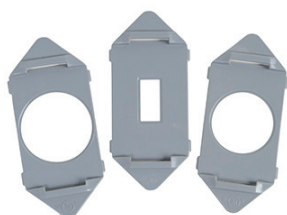
### Insert Plates



WIUCFR20PK



SINGLE GANG PLATES



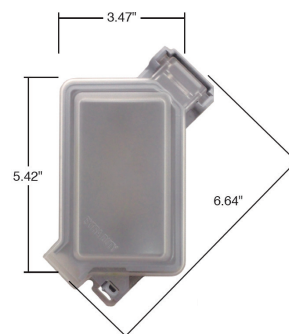
WIUCFR10PK



TWO-GANG PLATES

\*Snap-in-adaptor plates included for GFCI, duplex, and round receptacles

### Dimensions



WIUC10FRED



WIUC21FRED & WIUC20FRED

## Ordering Information

WHILE-IN-USE COVERS						
CATALOG NUMBER	UPC	GANG	MOUNTING	COLOR	cULus	EXTRA-DUTY
WIUC10FRED	78500704123	Single	Vertical/Horizontal	Frosted Top/Gray Bottom	X	X
WIUC20FRED	78500704124	Double	Vertical	Frosted Top/Gray Bottom	X	X
WIUC21FRED	78500749663	Double	Vertical	Frosted top/Gray Bottom	X	X
PLATE KITS FOR WIUC10FRED/WIUC20FRED						
WIUCFR10PK	78500749661	Single	Vertical/Horizontal	Gray	X	X
WIUCFR20PK	78500749662	Double	Vertical/Horizontal	Gray	X	X



### Electrical Wiring Systems

P.O. Box 4822  
Syracuse, NY 132214822  
800.776.4035  
www.legrand.us

570 Applewood Crescent  
Vaughan, Ontario L4K 4B4  
905.738.9195  
www.legrand.ca

