

Product End of Life Instructions

Harmony RM17 Control Relay





Potential disassembly risks

The information provided in this document assumes that the product is completely de-energized and uninstalled (refer to the instructions provided in the appropriate product manuals).

Dismantling/disassembling the product may entail hazards caused by, for example, sharp edges, chemical aggression or ejected parts.

⚠ WARNING

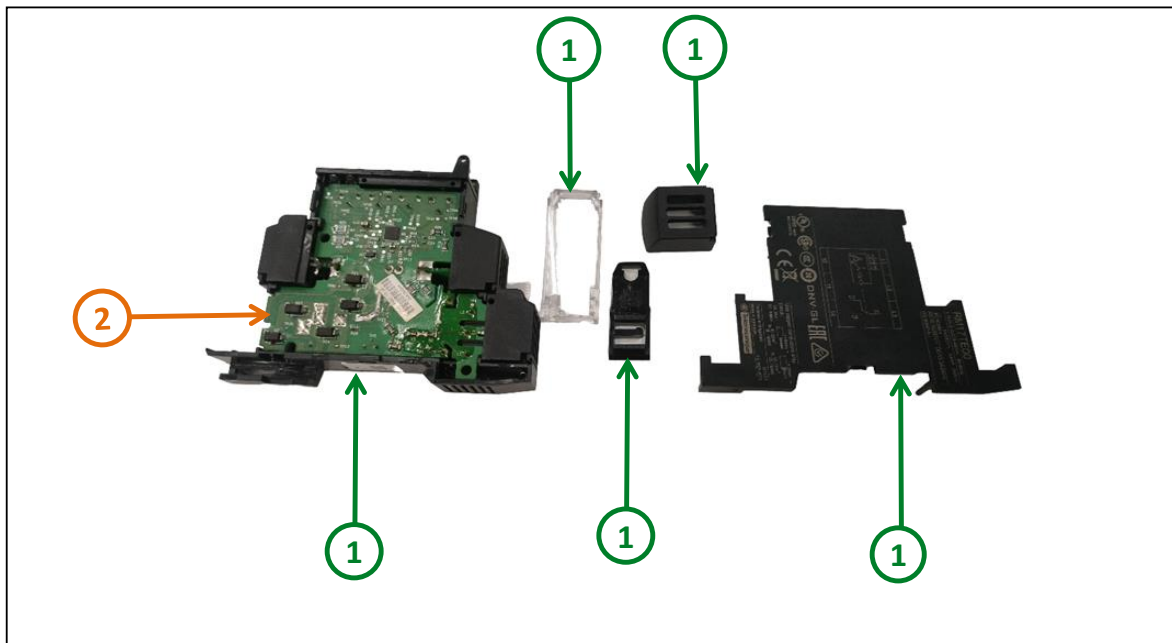
HAZARD DUE TO INSUFFICIENT PROTECTION

- Implement all safety measures required by the applicable regulations and by the processes used to dismantle/disassemble and dispose of the product.
- Use all necessary personal protective equipment such as gloves and goggles.

Failure to follow these instructions can result in death or serious injury.



End of Life Instructions



Recommendation	Number on drawing	Component / Material	Weight (in g)	Comment
To be dismantled	1	Cover, Housing, Frontage, Glass, Light Guide	36.49	Plastic Parts
To be depolluted	2	Electronic Board (Communication) > 10cm²	2.5.5	PCBA
Other		Screw, Terminal	9.5	Metal Parts



Product description

Manufacturer identification	Schneider Electric Industries SAS
Brand name	Schneider electric
Product function	A control relay allows electrical current to flow through a conducting coil that opens or closes a switch. It also protects the circuit current. With a control relay, users do not need to manually turn the switch to isolate or change the state of an electric circuit.
Product reference	RM17TE00
Total representative product mass	72.42 g
Representative product dimensions	72mm x 90mm x 17.5mm
Accessories	No
Date of information release	02-2025



Additional information

Legal information	This product family is in the scope of European Union directive 2012/19/EU on Waste Electrical and Electronic Equipment (WEEE). The product family must be disposed according to the legislation of the country. This document is intended for use by end of life recyclers or treatment facilities. It provides the basic information to assure an appropriate end of life treatment for the components and materials of the product.	
In case of special transportation: transportation method	No	
Recyclability potential	13%	Recyclability rate has been calculated based on REEECY'LAB tool developed by Ecosystem, for components/materials not covered by the tool, data from the "ECO'DEEE recyclability and recoverability calculation method" was taken. If no data was found a conservative assumption was used (0% recyclability).

Schneider Electric Industries SAS

Country Customer Care Center

<http://www.se.com/contact>

35, rue Joseph Monier

CS 30323

F- 92500 Rueil Malmaison Cedex

RCS Nanterre 954 503 439

Capital social 928 298 512 €

www.se.com

ENVEOLI1601001_V2

Published by Schneider Electric

© 2023 - Schneider Electric – All rights reserved

02-2025