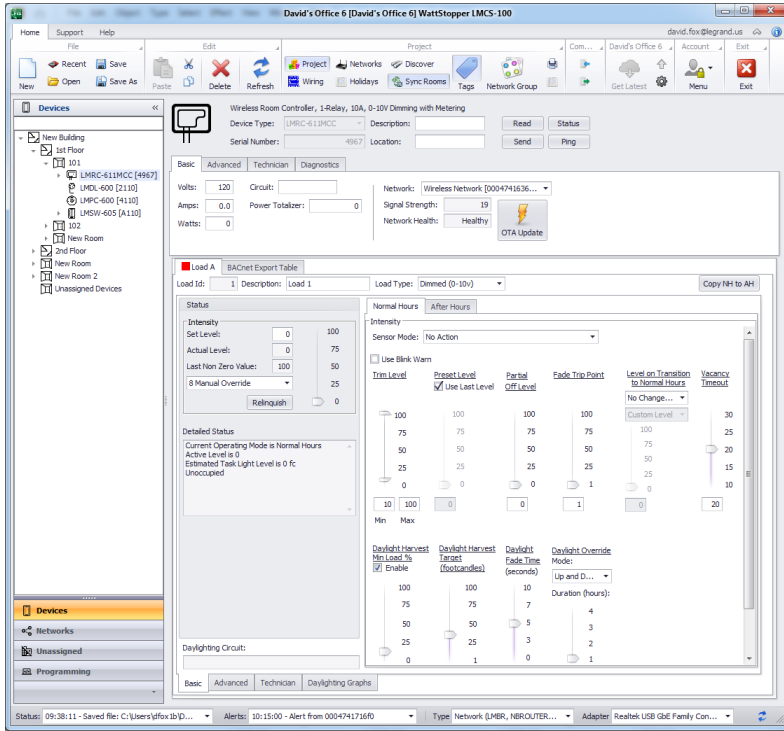


DLM DESIGN AND PROGRAMMING SOFTWARE

LMCS-100



- PC software for configuring and designing wired, wireless, and hybrid DLM lighting systems and DLM shading systems
- Real-time status of DLM devices and networks
- Allows pre-configuration of rooms for quoting and submittals before installation
- Cloud features support file storage, backup, and new firmware availability
- Provides valuable calibration tools and diagnostics

DESCRIPTION

LMCS software is used for designing DLM systems as well as configuring and troubleshooting them. Whether the project goal is implementing code compliance or more advanced lighting applications, LMCS features tools that help specifying engineers to make system and product decisions. LMCS also provides documentation and software tools that help technicians on site to manage and program actual DLM networks and devices.

PC-BASED CONFIGURATION

LMCS software features an intuitive user interface (UI) to identify current DLM system settings, allowing users to easily modify these settings and parameters. LMCS software may also be used to update existing firmware to the latest version, with enhanced features, without removing installed products.

[CLICK TO DOWNLOAD LMCS](#)

DESIGN APPLICATIONS

Designers can use the software to simplify project design, startup and documentation. By leveraging the power of the Legrand cloud to store code compliant design templates, LMCS now makes it even easier to produce wired room based designs. With the Sequence of Operations (SoO) report generator, the user can deliver individual room wiring details, Bill of Materials, and code-based SoO to the field for installation and programming.

Additionally, LMCS can provide a network riser diagram for inclusion in contract document packages, providing a complete view of building control architecture. Furthermore, LMCS-100 facilitates preparation of commissioning documentation through a variety of reports which are helpful for LEED projects. LMCS supports design and configuration of Human Centric Light (HCL) projects and includes full support for all DLM and HCL hardware parameters.

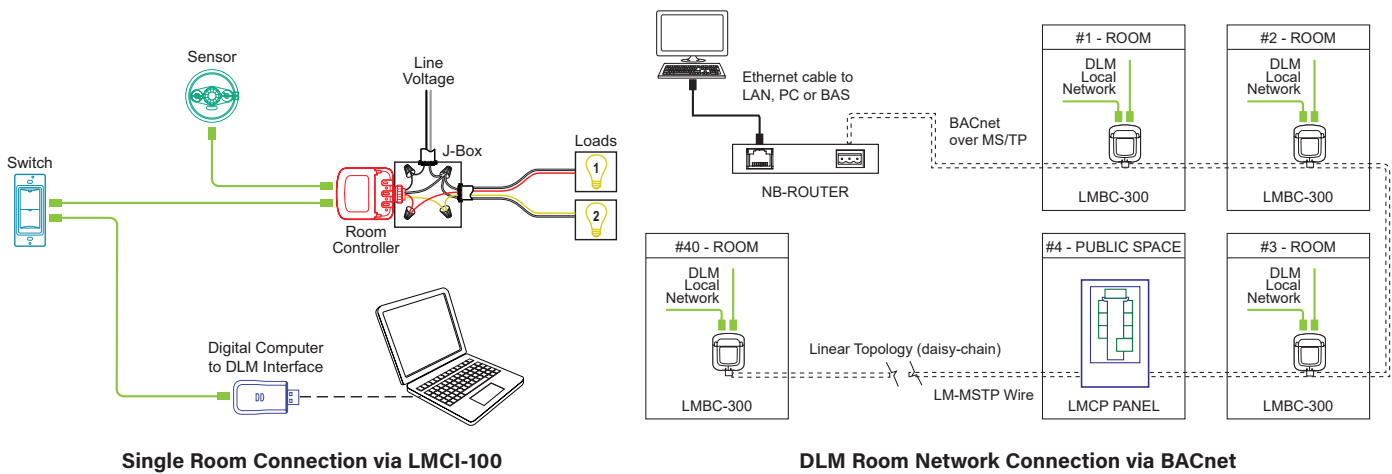
PROJECT		LOCATION/ TYPE	
---------	--	-------------------	--

FEATURES

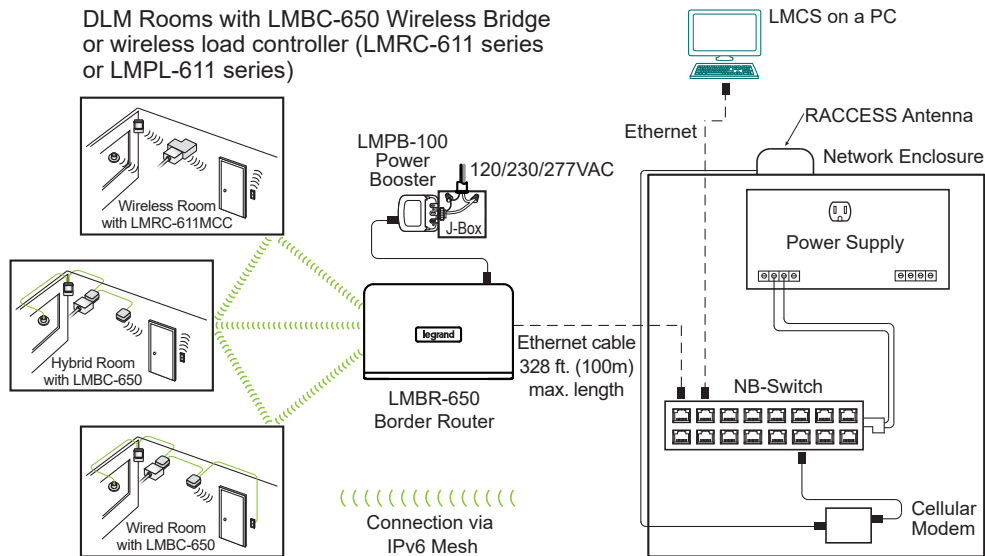
- Design DLM systems and export a full suite of documentation including riser diagrams, room wiring details, sequence of operations and bills of material
- Configure wired, wireless, or hybrid DLM lighting rooms, floors, and buildings
- Configure DLM shading products
- Set and modify device parameters to meet code and enhance the user experience
- Update firmware of DLM devices
- Manage standard DLM loads, relay panels and HCL dimming systems
- Create and modify time of day event schedules (requires LMBR-650)
- Full set of reports provides details and summary of rooms and DLM networks
- Connect to wired DLM network via LMCI-100 or BACnet network (requires BACnet compatible router or switch)
- Connect to wireless and hybrid DLM networks via LMBR-650
- LMCS freely available as download from Wattstopper website
- Update firmware of DLM Devices. Set an update window for your site and allow your devices to update automatically when you are off-site

CONNECTIONS TO DLM SYSTEM

Wired DLM



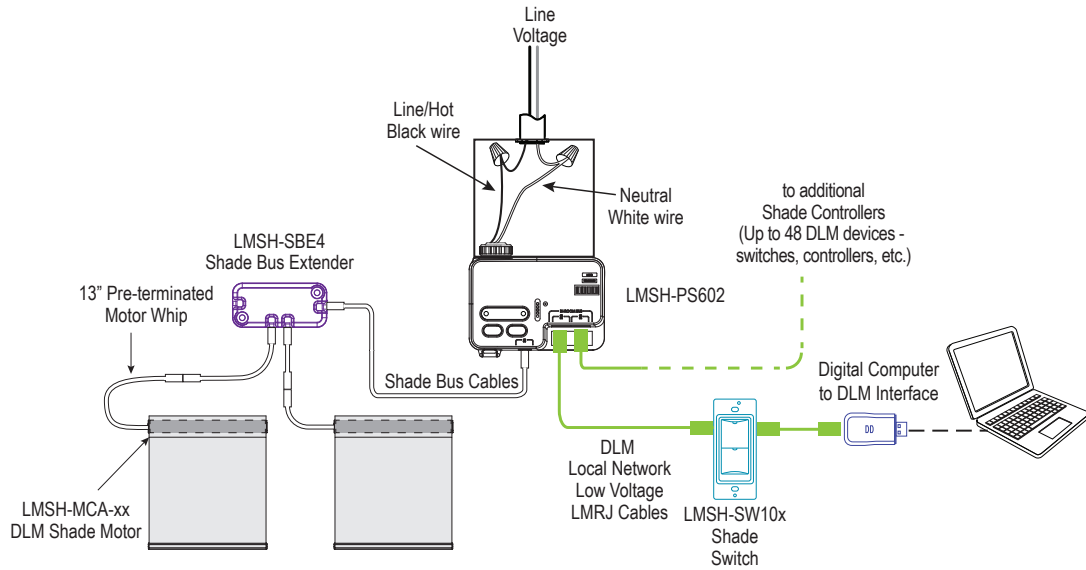
Wireless DLM



CONNECTIONS TO DLM SYSTEM

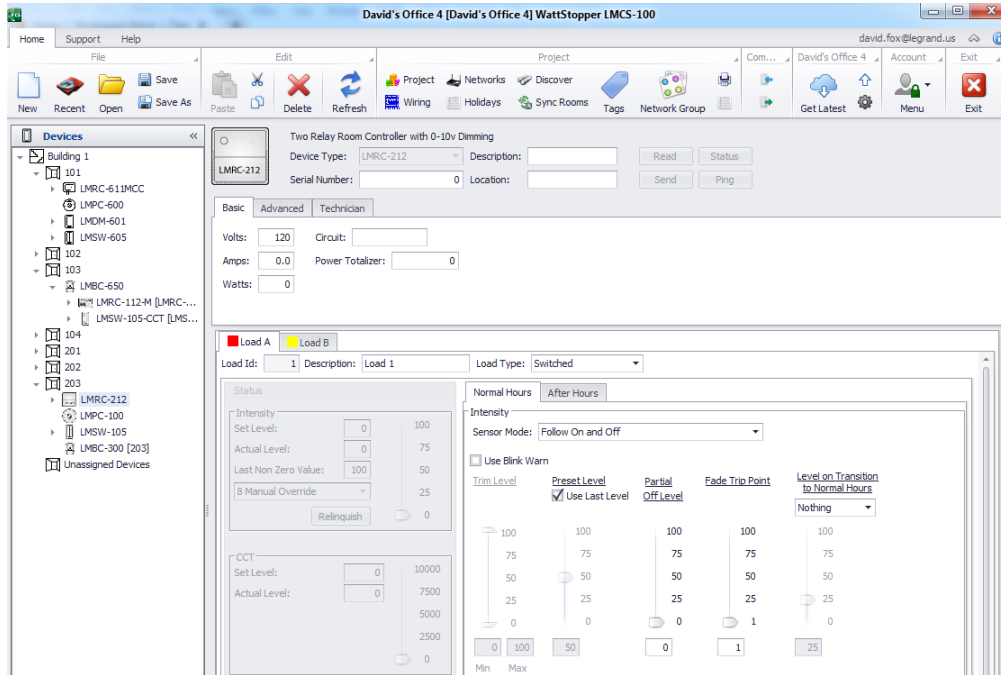
DLM Shading

NOTE: Single room connection with shades only shown. Both shades and lighting can be incorporated within a single room. Shades can also be included as part of a DLM Room Network, connected via BACnet.

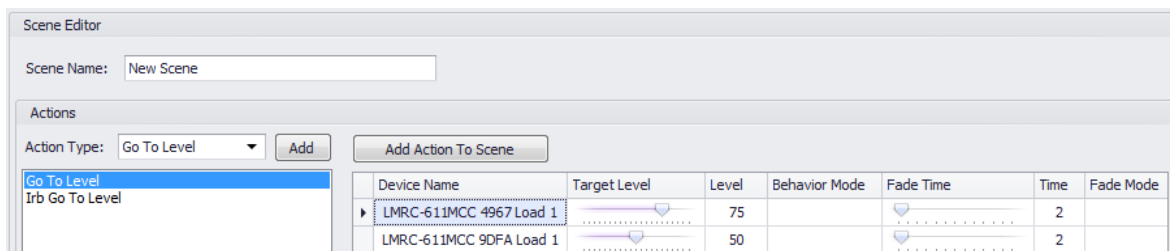


LMCS SOFTWARE - CONFIGURATION

LMCS Room Types



Wireless Scene Editor



LMCS SOFTWARE - CONFIGURATION

Wireless Networking

Network Device Counts

	Enclosures	Switches	Modems	Segmans	Routers	Bridges
Network Device Counts	0	0	0	0	2	0

Command

- Connection Strength
- Ping
- Hops
- Battery Level

Network

- Networks

Type: Network (LMBR, NBROUTER... Adapter: Realtek USB GbE Family Con... Connected

Wireless Parameters

Wireless Room Controller, 1-Relay, 10A, 0-10V Dimming with Metering

Device Type: LMRC-611MCC Description: Serial Number: 4967 Location: Read Status Send Ping

Basic Advanced Technician Diagnostics

Volts: 120 Circuit: Amps: 0.0 Power Totalizer: 0 Watts: 0

Network: Wireless Network [0004741636...] Signal Strength: 19 Network Health: Healthy OTA Update

Load A BACnet Export Table

Load Id: 1 Description: Load 1 Load Type: Dimmed (0-10v) Copy NH to AH

Status

Intensity

Set Level: 0 Actual Level: 0 Last Non Zero Value: 100 8 Manual Override: 25 Relinquish: 0

Detailed Status

Current Operating Mode is Normal Hours Active Level is 0 Estimated Task Light Level is 0 fc Unoccupied

Daylighting Circuit:

Normal Hours After Hours

Intensity

Sensor Mode: No Action

Use Blink Warn

Trim Level Preset Level Partial Off Level Fade Trip Point Level on Transition to Normal Hours Vacancy Timeout

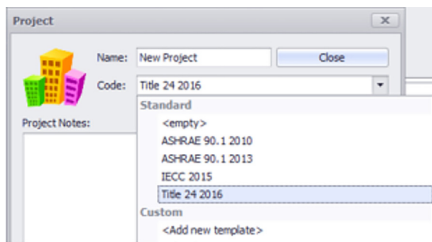
Daylight Harvest Min Load % Daylight Harvest Target Daylight Fade Time Daylight Override Mode: Up and D... Duration (hours):

LMCS SOFTWARE - CONFIGURATION

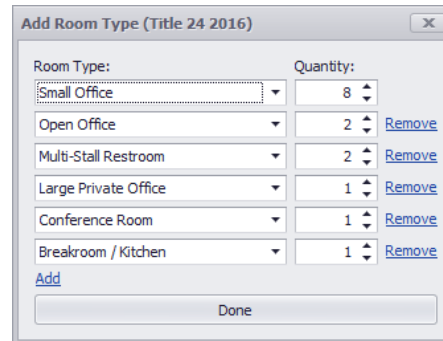
Device Grid - Allows you to select and modify parameter values for multiple devices quickly

Channel Id	Load Id	Relay Circuit	Description	Load Type	Daylight...	Lamp Bur...	Reverse...	Max Bas...	Shed Level	Calibratio...	Calibratio...	CCT Low ...	CCT High...	CCT Low ...	CCT High ...
Area: Building 1															
Room: 101															
Controller: LMRC-611MCC															
0	1		Load 1 - ...	Dimmed (...)		0	<input type="checkbox"/>	0	65	1	100	0	10000	0	10000
Room: 102															
Controller: LMRC-611MCC															
0	2		Load 2 - ...	Dimmed (...)		0	<input type="checkbox"/>	0	65	1	100	0	10000	0	10000
Room: 103															
Controller: LMRC-112-M [LMRC-112-M]															
0	1		LOAD A	Dimmed (...)		0	<input type="checkbox"/>	0	100	1	100	0	10000	0	10000
1	2		LOAD B	Dimmed (...)		0	<input type="checkbox"/>	0	100	1	100	0	10000	0	10000
Room: 201															
Controller: LMRC-611MCC															
0	1		Load 1 - ...	Dimmed (...)		0	<input type="checkbox"/>	0	65	1	100	0	10000	0	10000
Room: 202															
Controller: LMRC-611MCC															
0	1		Load 1 - ...	Dimmed (...)		0	<input type="checkbox"/>	0	65	1	100	0	10000	0	10000
Room: 203															

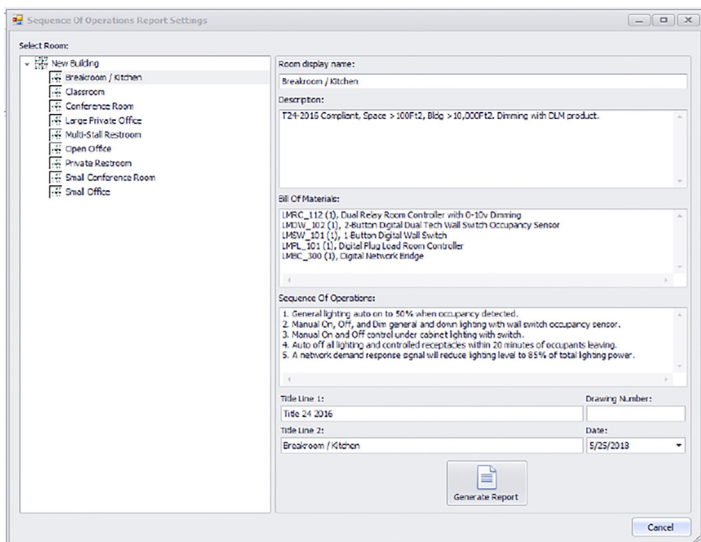
Energy Code Selection - Presets Sequence of Operations and BOM



Typical Room Type Templates

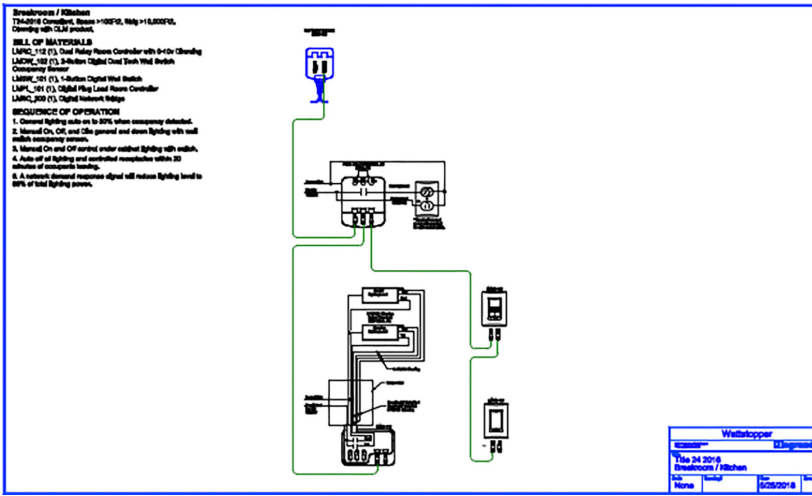


Sequence of Operation/Bill of Material Report Editor



LMCS SOFTWARE - PROJECT DESIGN

Sequence of Operation Report - Detail Room Diagram, Code Designation, Bill of Materials, and Sequence of Operations



Riser Diagram Generated From LMCS File

