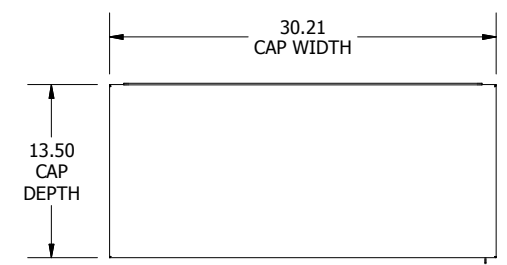
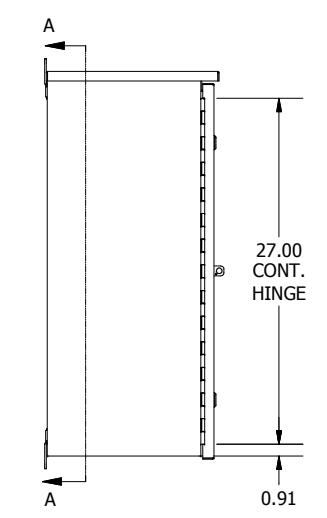


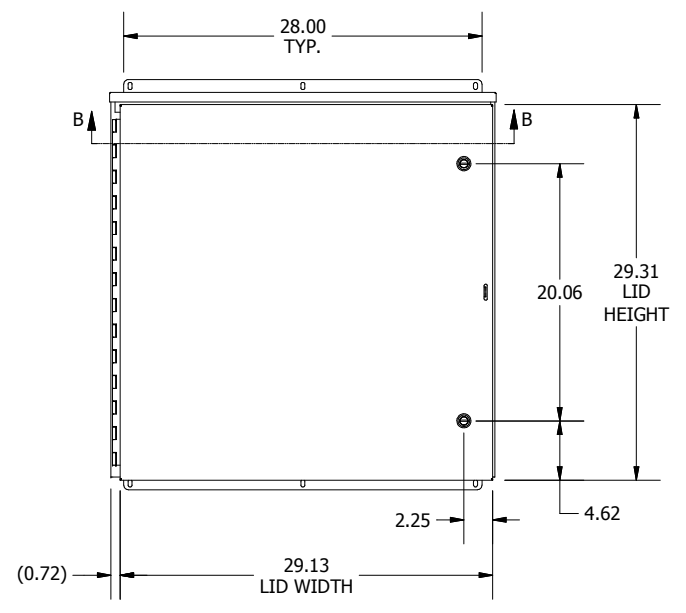
REVISION HISTORY			
REV	DESCRIPTION	BY	DATE
A	ECO#: HFW161018-02	MR	02/01/2017



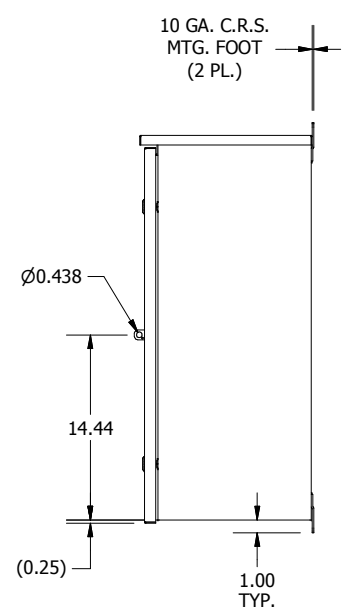
TOP VIEW



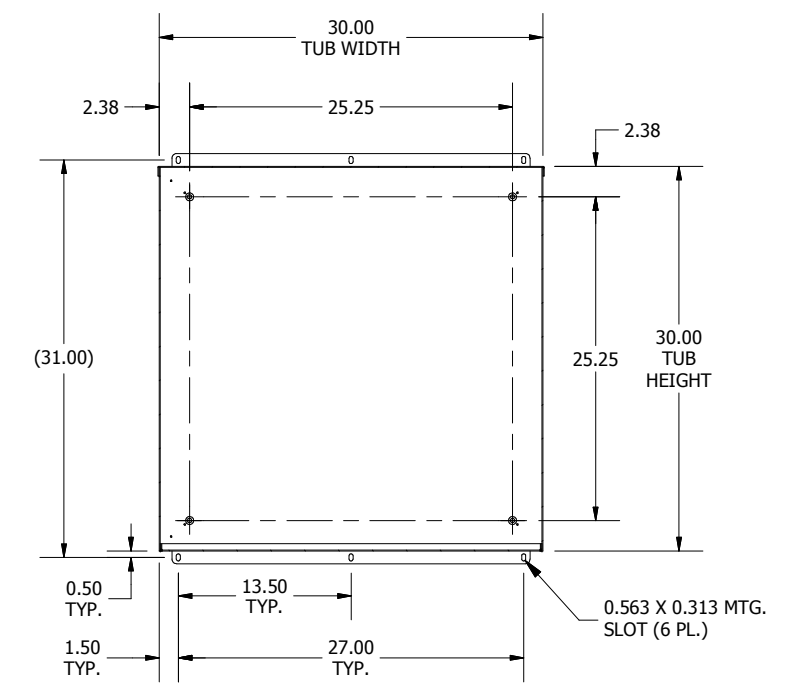
LEFT SIDE VIEW



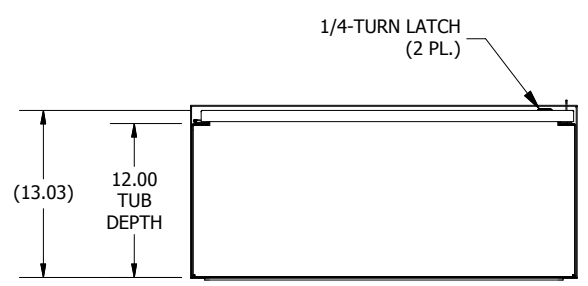
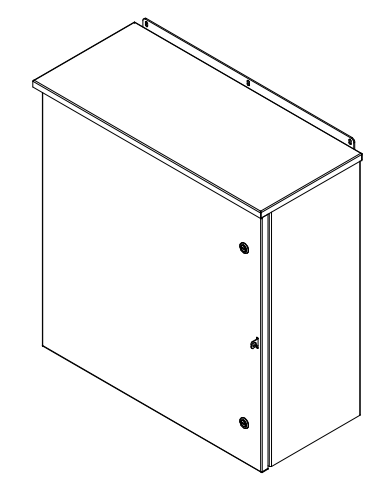
FRONT VIEW



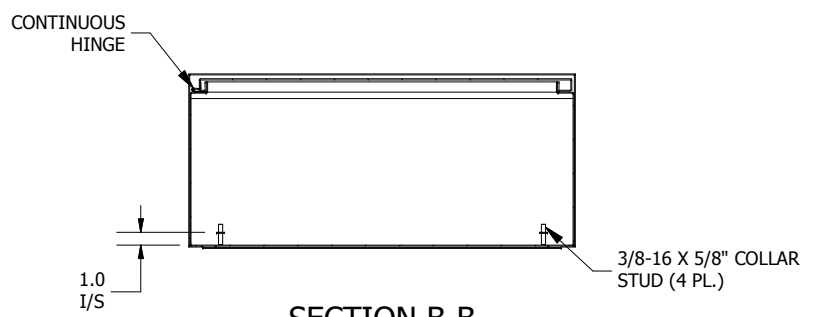
RIGHT SIDE VIEW



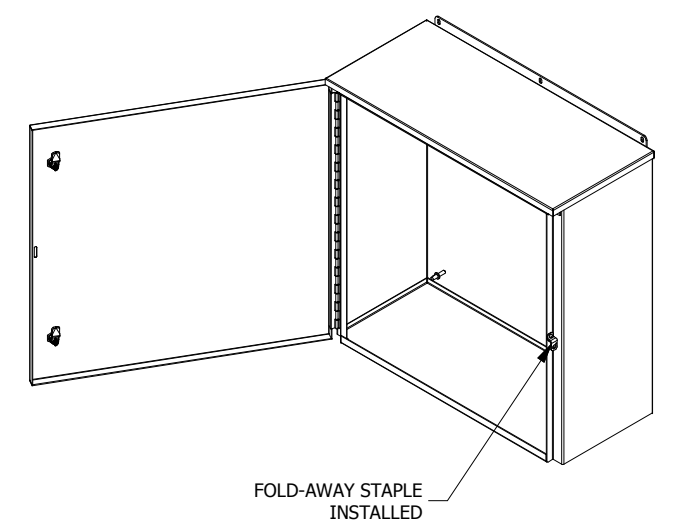
**SECTION A-A
(INSIDE BACK OF ENCL.)**



BOTTOM VIEW



**SECTION B-B
(INSIDE TOP OF ENCL.)**



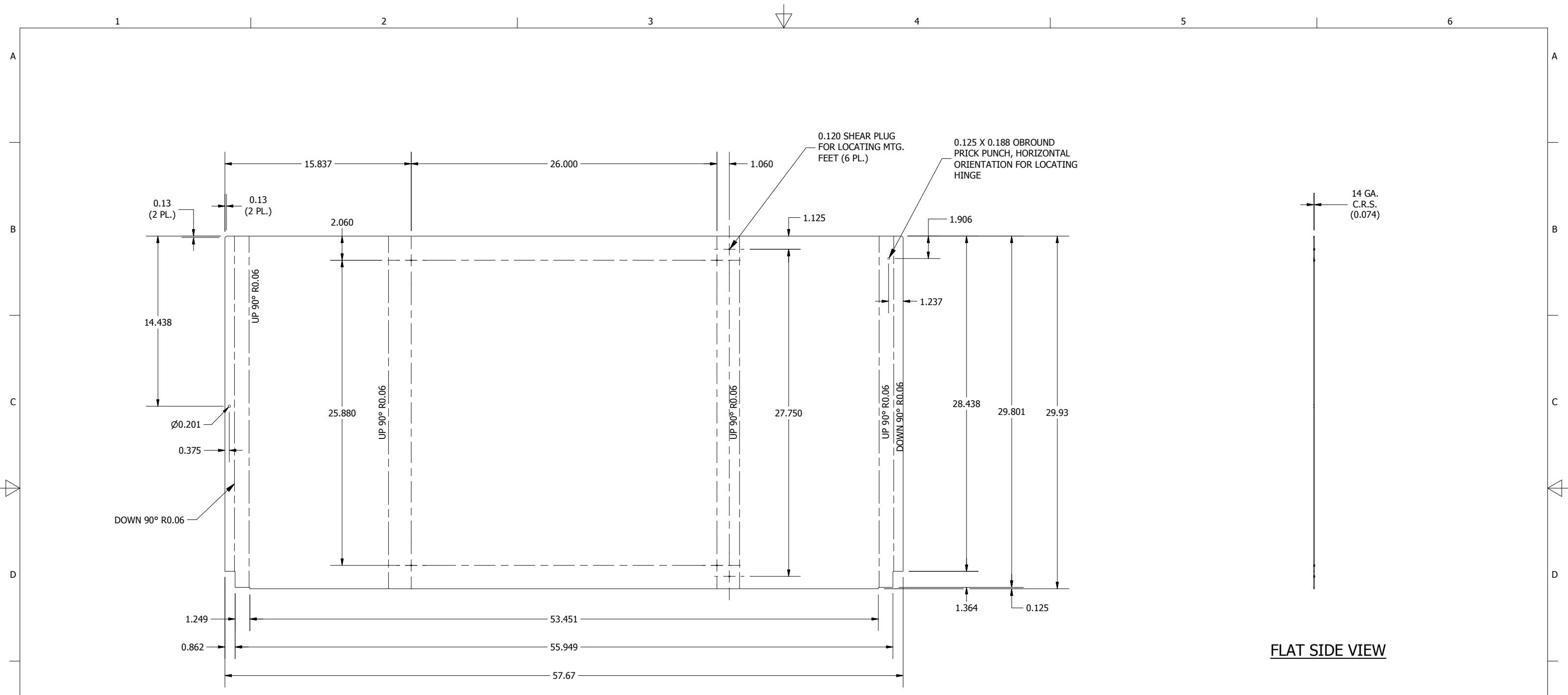
- NOTES:**
1. ALL DIMENSIONS ARE FROM OUTSIDE UNLESS OTHERWISE NOTED.
 2. ENCLOSURE IS FABRICATED FROM 14 GA. CARBON STEEL.
 3. COLLAR STUDS ARE PROVIDED FOR MOUNTING OPTIONAL SUB PANEL.
 4. ENCLOSURE IS WELDED TOGETHER.
 5. FINISH: ANSI-61 GRAY TEXTURE POLYESTER POWDER (INTERIOR/EXTERIOR).
 6. ENCLOSURE IS RATED UL TYPE 3R.

DIMENSIONS ARE IN INCHES (MM). TOLERANCES UNLESS OTHERWISE SPECIFIED ARE AS FOLLOWS:
 .X = ±.06 (1.6)
 .XX = ±.031 (.8)
 .XXX = ±.016 (.25)
 Ø = ±.005
 ANGLE TOL ± 1°

HUBBELL **WIEGMANN**
 FREEBURG, ILLINOIS, USA

—NOTICE— THIS DRAWING IS THE PROPERTY OF WIEGMANN, A DIVISION OF HUBBELL INCORPORATED. IT IS LOANED TO YOU AND MUST NOT BE USED IN ANY WAY DETRIMENTAL TO THE INTEREST OF WIEGMANN.

PART NUMBER: RHC303012	MATERIAL: SEE NOTE	SCALE: NONE	CHK'D DATE: 6/26/2014
DESCRIPTION: RHC, NEMA 3R ENCL., CS, 30X30X12		DRAWN BY: PS	CREATED ON: 6/26/2014
		CHK'D BY: VR	DWG. NO. HWD RHC303012_1
		SHEET 1 OF 9	REV. A



BLR FLAT PATTERN VIEW

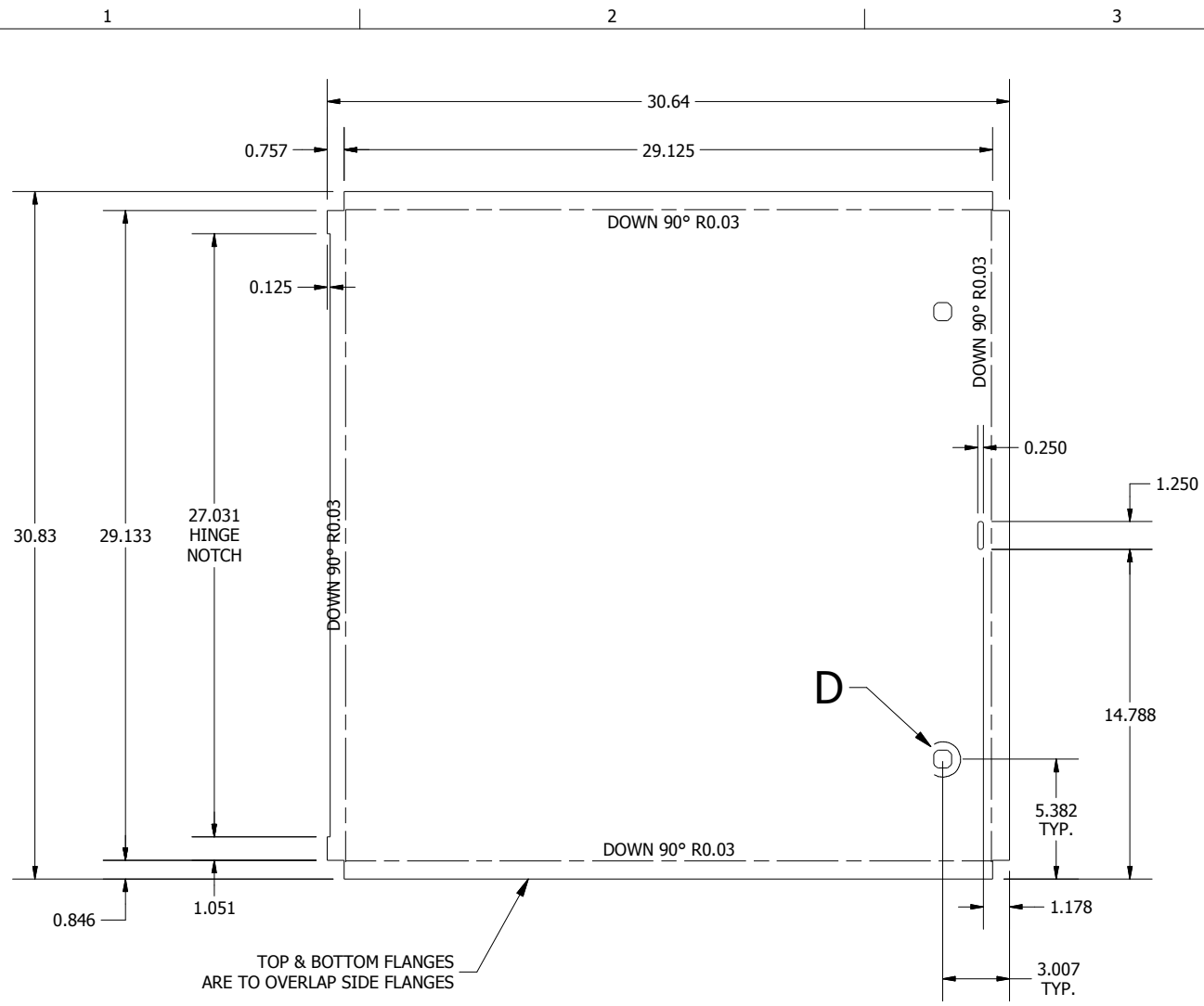
FLAT SIDE VIEW

DIMENSIONS ARE IN INCHES (MM). TOLERANCES UNLESS OTHERWISE SPECIFIED ARE AS FOLLOWS:
 .X = ±.06 (1.6)
 .XX = ±.031 (.8)
 .XXX = ±.016 (.25)
 Ø = ±.005
 ANGLE TOL ± 1'

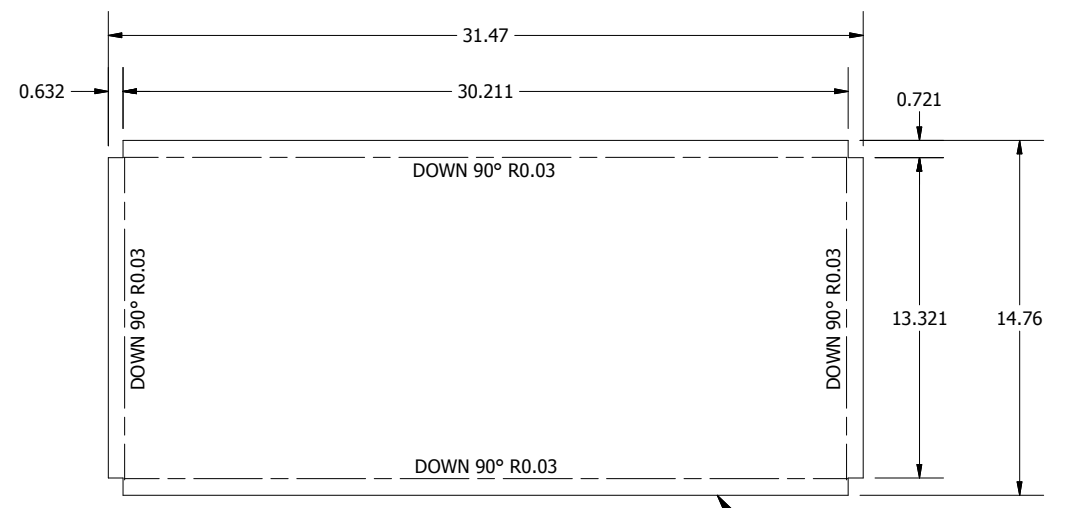
HUBBELL® **WIEGMANN**®
 FREEBURG, ILLINOIS, USA

—NOTICE— THIS DRAWING IS THE PROPERTY OF WIEGMANN, A DIVISION OF HUBBELL INCORPORATED. IT IS LOANED TO YOU AND MUST NOT BE USED IN ANY WAY DETRIMENTAL TO THE INTEREST OF WIEGMANN.

PART NUMBER: RHC303012BLR	MATERIAL: SEE NOTE	SCALE: NONE	CHK'D DATE: 6/26/2014
		DRAWN BY: PS	CREATED ON: 6/26/2014
DESCRIPTION: RHC, BLR, MEDIUM, CS, 30X30X12		CHK'D BY: VR	DWG. NO. HWRHC303012_2.1
		REV. A	
SHEET 2 OF 9		6	



LID FLAT PATTERN VIEW



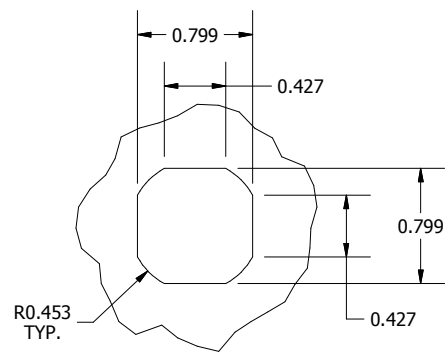
CAP FLAT PATTERN VIEW



FLAT SIDE VIEW



FLAT SIDE VIEW



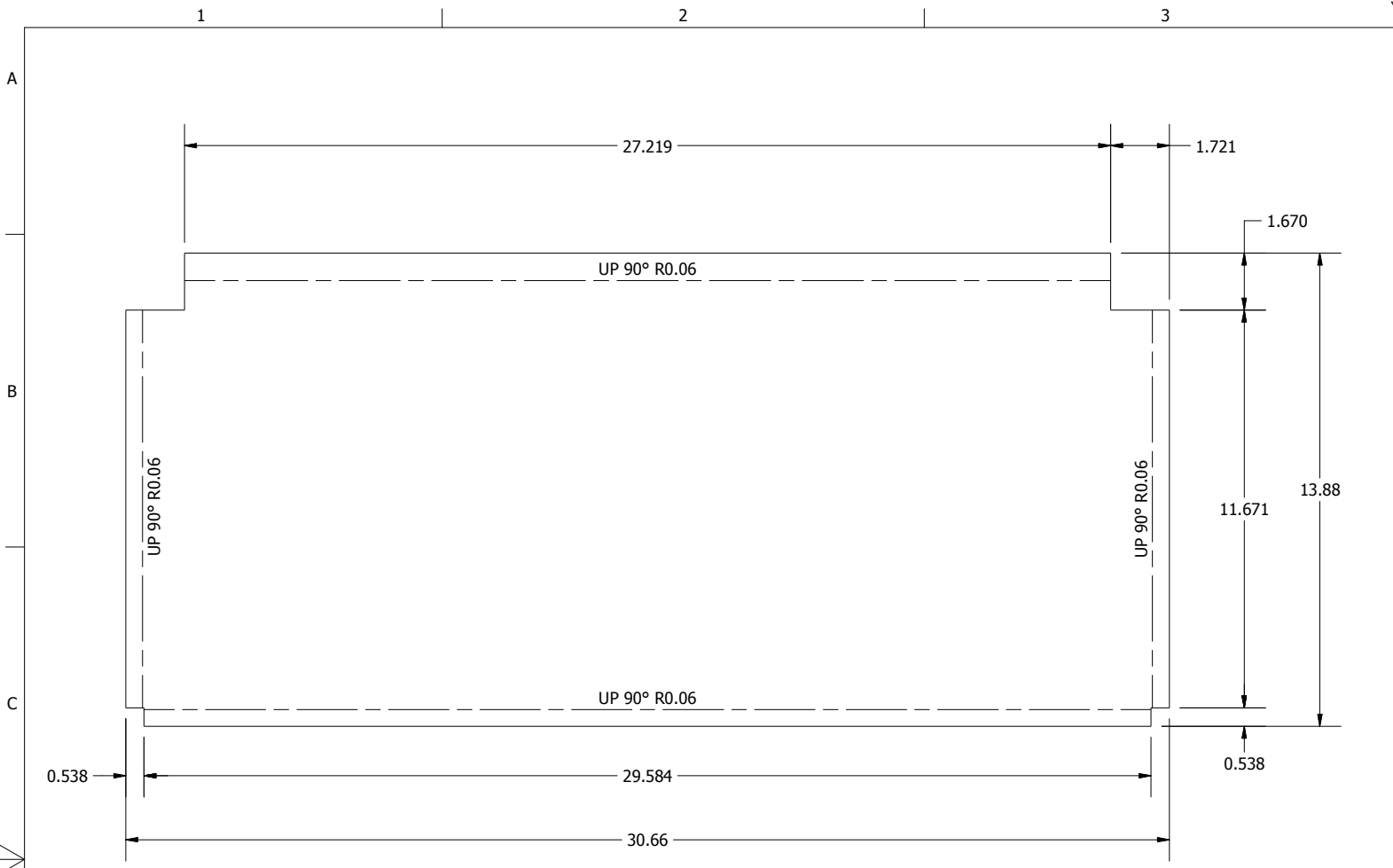
DETAIL D (2 PL.)
(LATCH PUNCHING DETAIL)

DIMENSIONS ARE IN INCHES (MM). TOLERANCES UNLESS OTHERWISE SPECIFIED ARE AS FOLLOWS:
 .X = ±.06 (1.6)
 .XX = ±.031 (.8)
 .XXX = ±.016 (.25)
 Ø = ±.005
 ANGLE TOL ± 1°

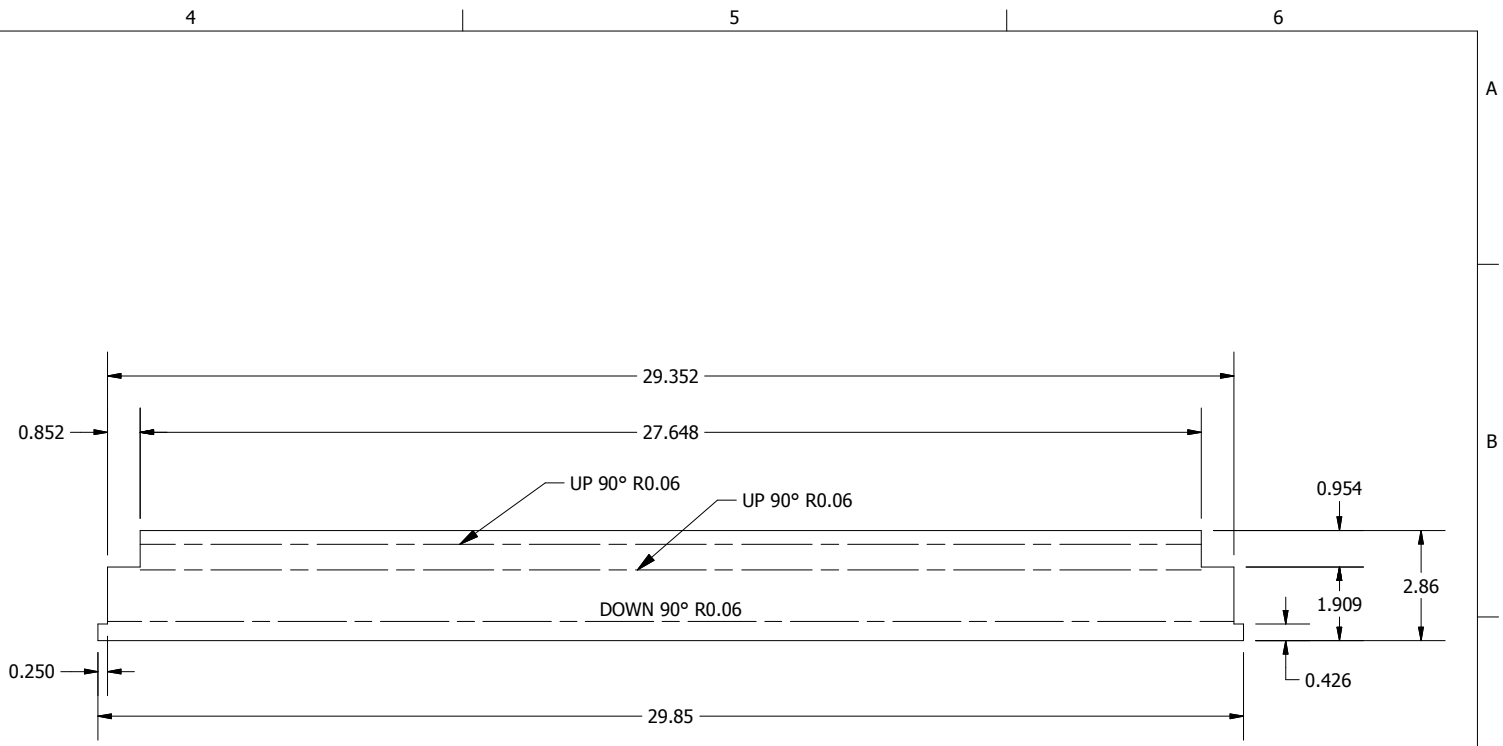


—NOTICE— THIS DRAWING IS THE PROPERTY OF WIEGMANN, A DIVISION OF HUBBELL INCORPORATED. IT IS LOANED TO YOU AND MUST NOT BE USED IN ANY WAY DETRIMENTAL TO THE INTEREST OF WIEGMANN.

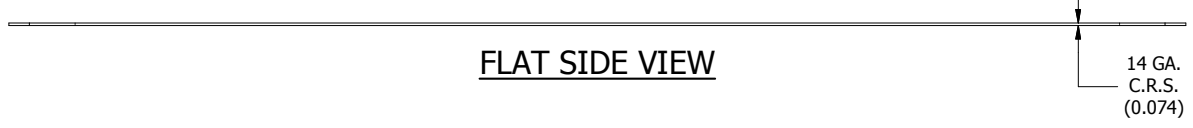
PART NUMBER: RHC3030LID	MATERIAL: SEE NOTE	SCALE: NONE	CHK'D DATE: 6/26/2014
DESCRIPTION: RHC, LID, CS, NEMA 3R, 30X30		DRAWN BY: PS	CREATED ON: 6/26/2014
		CHK'D BY: VR	DWG. NO. HWDRHC303012_2.2
			REV. A
		SHEET 3 OF 9	



BOTTOM ENDWALL FLAT PATTERN VIEW



TOP ENDWALL FLAT PATTERN VIEW



FLAT SIDE VIEW



FLAT SIDE VIEW

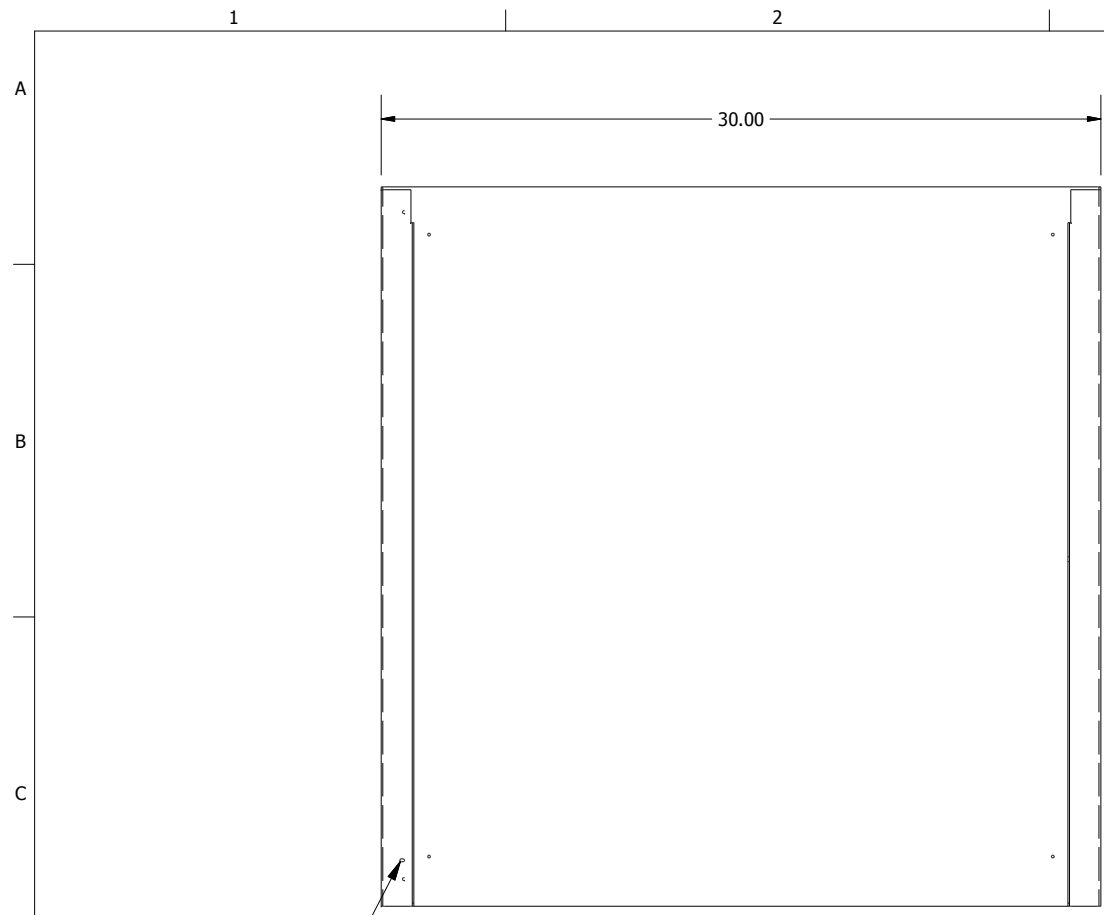
DIMENSIONS ARE IN INCHES (MM). TOLERANCES UNLESS OTHERWISE SPECIFIED ARE AS FOLLOWS:
 .X = ±.06 (1.6)
 .XX = ±.031 (.8)
 .XXX = ±.016 (.25)
 Ø = ±.005
 ANGLE TOL ± 1'

HUBBELL **WIEGMANN**
 FREEBURG, ILLINOIS, USA

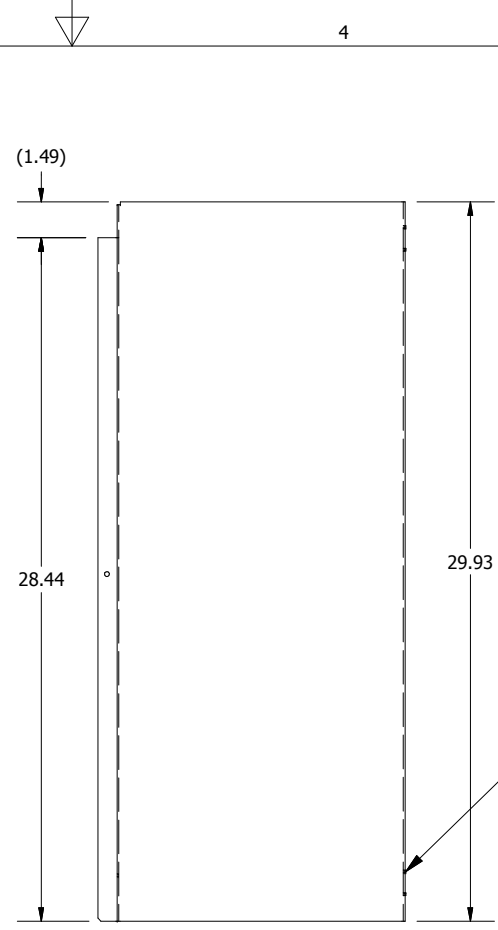
—NOTICE— THIS DRAWING IS THE PROPERTY OF WIEGMANN, A DIVISION OF HUBBELL INCORPORATED. IT IS LOANED TO YOU AND MUST NOT BE USED IN ANY WAY DETRIMENTAL TO THE INTEREST OF WIEGMANN.

PART NUMBER: RHC3012BTM	MATERIAL: SEE NOTE	SCALE: NONE	CHK'D DATE: 6/26/2014
DESCRIPTION: RHC, BTM, CS, NEMA 3R, 30X12		DRAWN BY: PS	CREATED ON: 6/26/2014
		CHK'D BY: VR	DWG. NO. HWD RHC303012_2.3
		SHEET 4 OF 9	REV. A

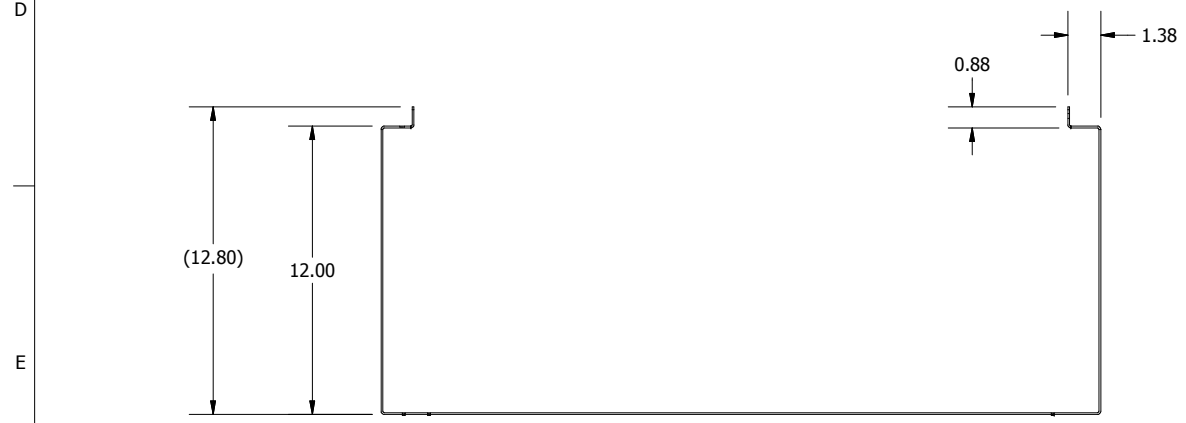
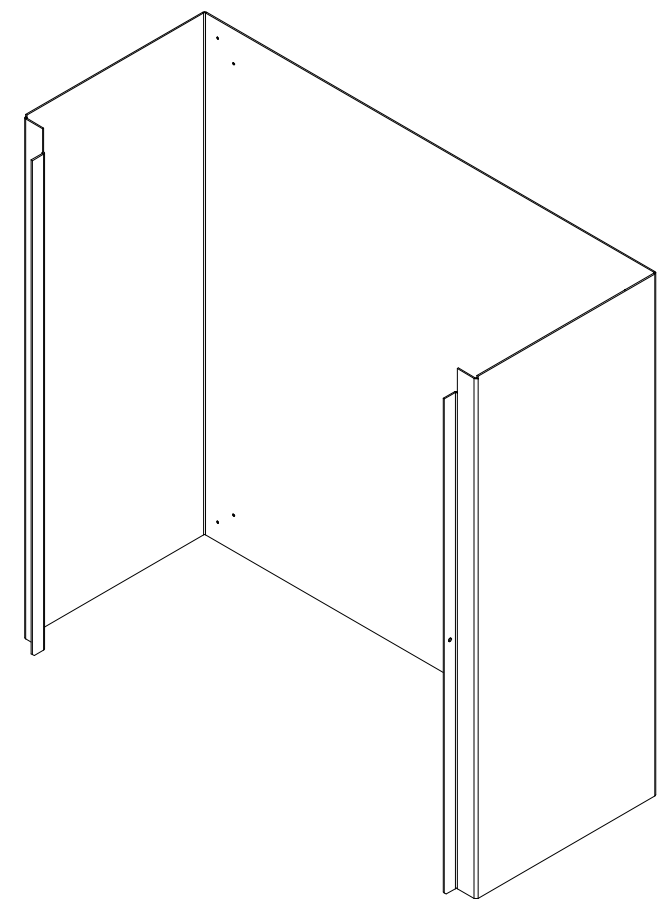
DWG. NO. HWD RHC303012_2.3	REV. A
SHEET 4 OF 9	



BLR FRONT VIEW




SIDE VIEW



BOTTOM VIEW

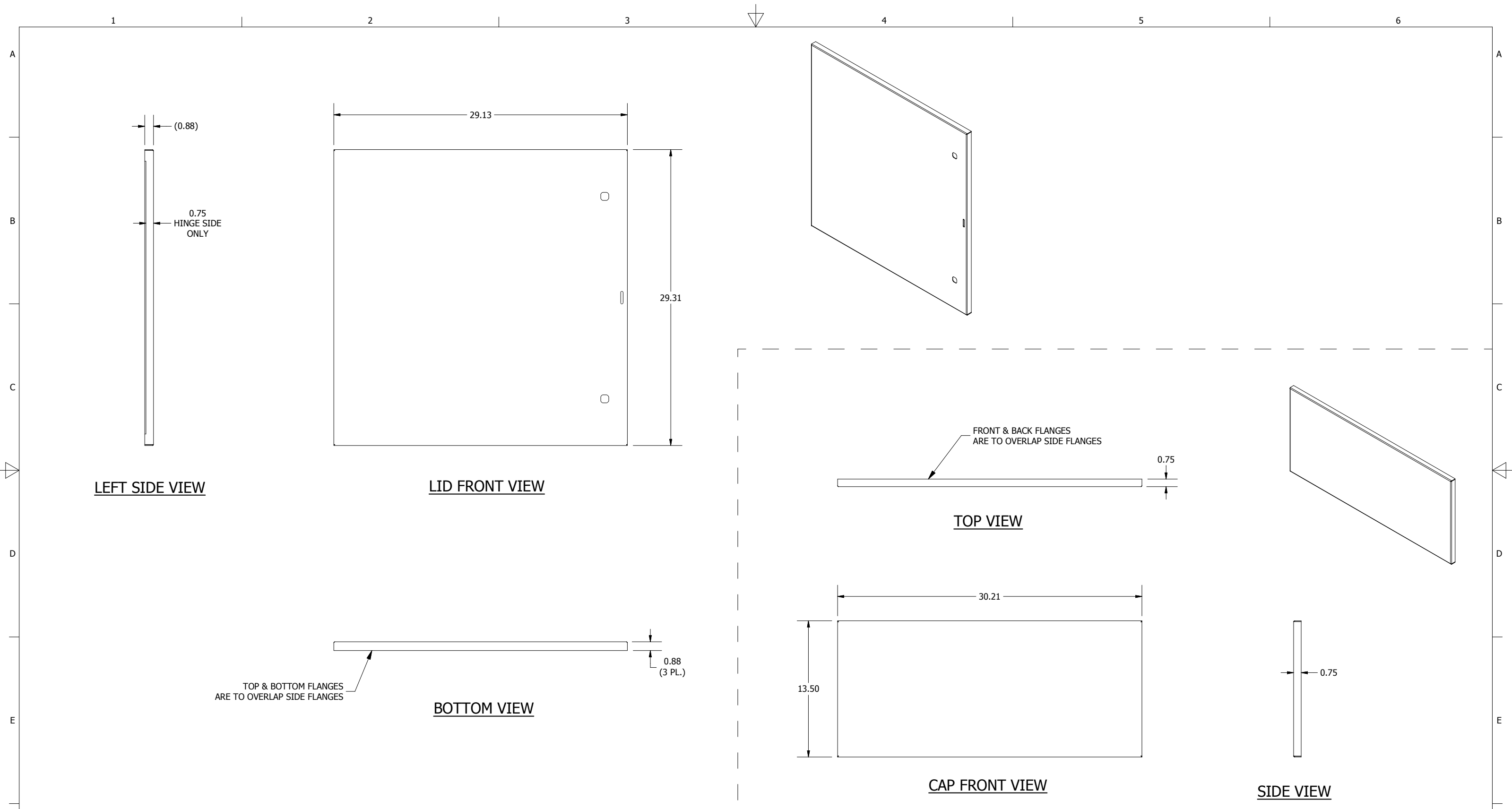
DIMENSIONS ARE IN INCHES (MM). TOLERANCES UNLESS OTHERWISE SPECIFIED ARE AS FOLLOWS:
 .X = ±.06 (1.6)
 .XX = ±.031 (.8)
 .XXX = ±.016 (.25)
 Ø = ±.005
 ANGLE TOL ± 1°


WIEGMANN
 FREEBURG, ILLINOIS, USA

-NOTICE- THIS DRAWING IS THE PROPERTY OF WIEGMANN, A DIVISION OF HUBBELL INCORPORATED. IT IS LOANED TO YOU AND MUST NOT BE USED IN ANY WAY DETRIMENTAL TO THE INTEREST OF WIEGMANN.

PART NUMBER: RHC303012BLR	MATERIAL: SEE NOTE	SCALE: NONE	CHK'D DATE: 6/26/2014
DESCRIPTION: RHC, BLR, MEDIUM, CS, 30X30X12		DRAWN BY: PS	CREATED ON: 6/26/2014
		CHK'D BY: VR	DWG. NO. HWRHC303012_3.1
		SHEET 5 OF 9	REV. A

SHEET 5 OF 9		REV. A
--------------	--	--------



DIMENSIONS ARE IN INCHES (MM). TOLERANCES UNLESS OTHERWISE SPECIFIED ARE AS FOLLOWS:
 .X = ±.06 (1.6)
 .XX = ±.031 (.8)
 .XXX = ±.016 (.25)
 Ø = ±.005
 ANGLE TOL ± 1'



WIEGMANN
 FREEBURG, ILLINOIS, USA

-NOTICE- THIS DRAWING IS THE PROPERTY OF WIEGMANN, A DIVISION OF HUBBELL INCORPORATED. IT IS LOANED TO YOU AND MUST NOT BE USED IN ANY WAY DETRIMENTAL TO THE INTEREST OF WIEGMANN.

PART NUMBER:
RHC3030LID

MATERIAL:
SEE NOTE

SCALE: NONE
 DRAWN BY: PS
 CHK'D BY: VR

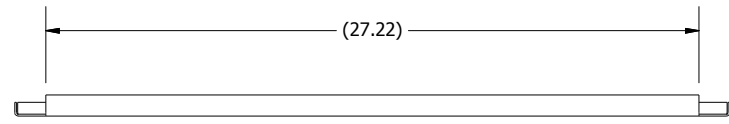
CHK'D DATE: 6/26/2014
 CREATED ON: 6/26/2014

DESCRIPTION:
RHC, LID, CS, NEMA 3R, 30X30

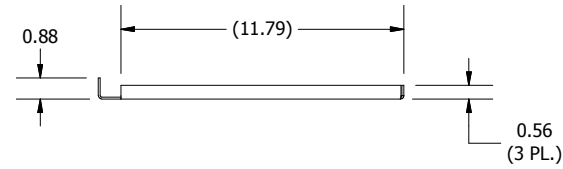
DWG. NO.
HWD RHC303012_3.2

REV.
A

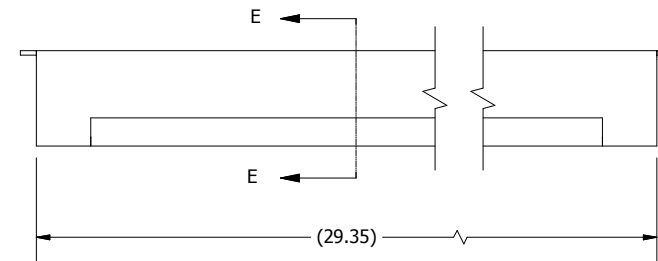
SHEET 6 OF 9



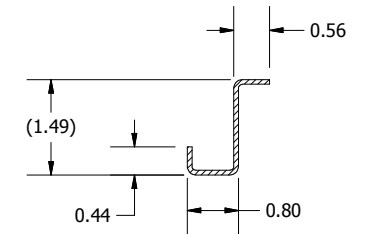
BOTTOM ENDWALL FRONT VIEW



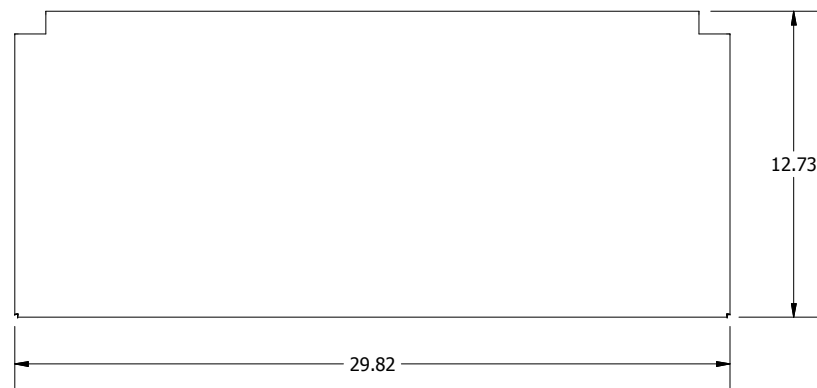
SIDE VIEW



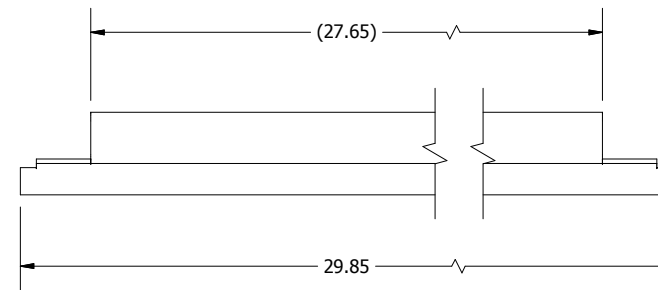
TOP ENDWALL FRONT VIEW



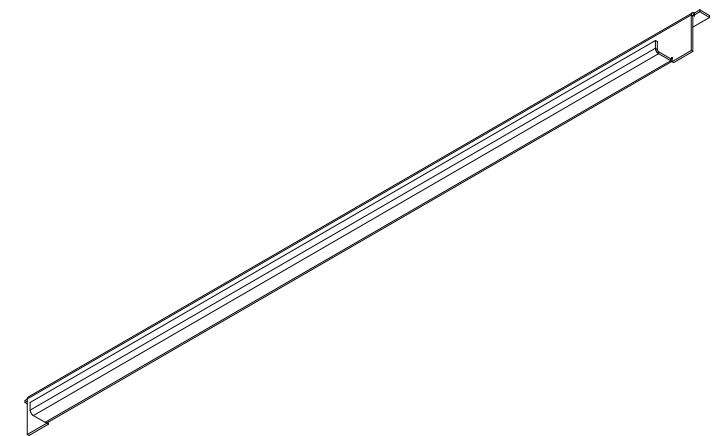
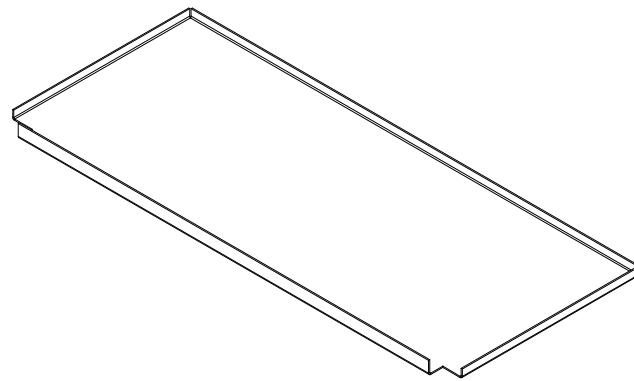
SECTION E-E



BOTTOM VIEW



BOTTOM VIEW



DIMENSIONS ARE IN INCHES (MM). TOLERANCES UNLESS OTHERWISE SPECIFIED ARE AS FOLLOWS:
 .X = ±.06 (1.6)
 .XX = ±.031 (.8)
 .XXX = ±.016 (.25)
 Ø = ±.005
 ANGLE TOL ± 1'



WIEGMANN
 FREEBURG, ILLINOIS, USA

-NOTICE- THIS DRAWING IS THE PROPERTY OF WIEGMANN, A DIVISION OF HUBBELL INCORPORATED. IT IS LOANED TO YOU AND MUST NOT BE USED IN ANY WAY DETRIMENTAL TO THE INTEREST OF WIEGMANN.

PART NUMBER:
RHC3012BTM

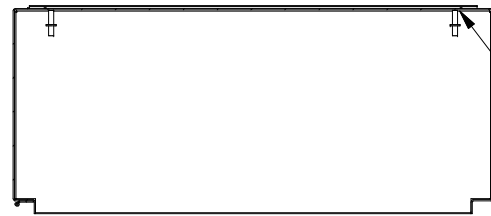
MATERIAL:
SEE NOTE

SCALE: NONE
 DRAWN BY: PS
 CHK'D BY: VR

CHK'D DATE: 6/26/2014
 CREATED ON: 6/26/2014

DESCRIPTION:
RHC, BTM, CS, NEMA 3R, 30X12

DWG. NO. HWDRHC303012_3.3
 REV. A
 SHEET 7 OF 9

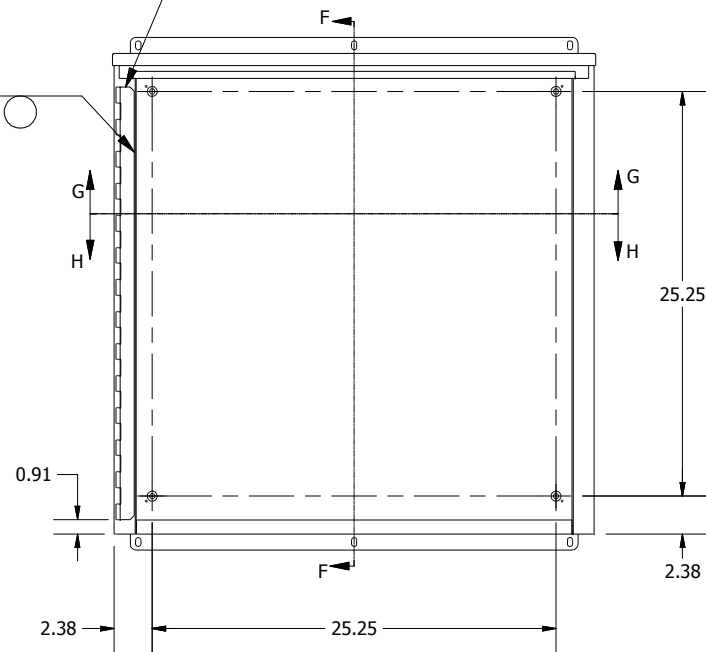


SECTION H-H

TACK WELD BOTTOM ENDWALL TO INSIDE OF BLR ON SIDES EVENLY & THROUGHOUT

TACK WELD ON BOTH ENDS OF HINGE

SPOT WELD HINGE TO TUB FLANGE EVENLY & THROUGHOUT

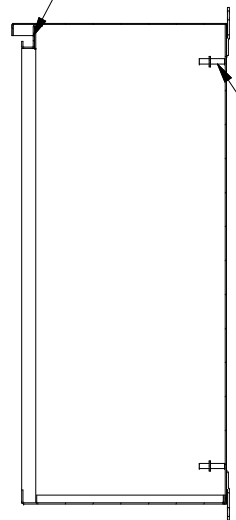


TUB WELD FRONT VIEW

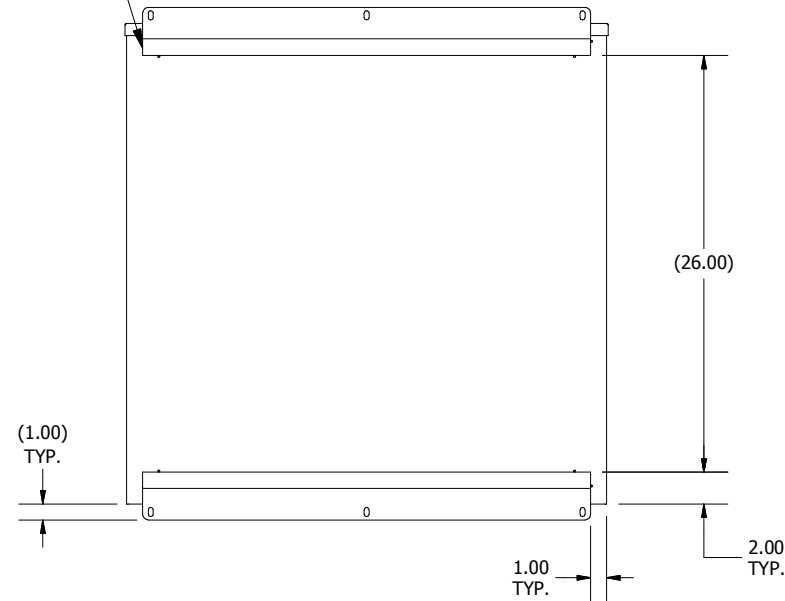
TOP ENDWALL OVERLAPS BLR FLANGE

TACK WELD MTG. FOOT ON THREE SIDES TO BACK OF TUB EVENLY & THROUGHOUT (2 PL.)

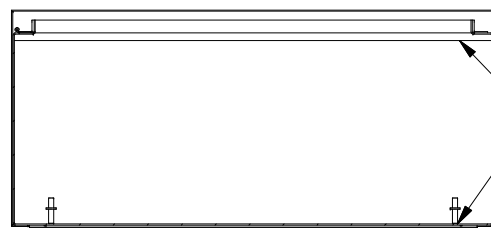
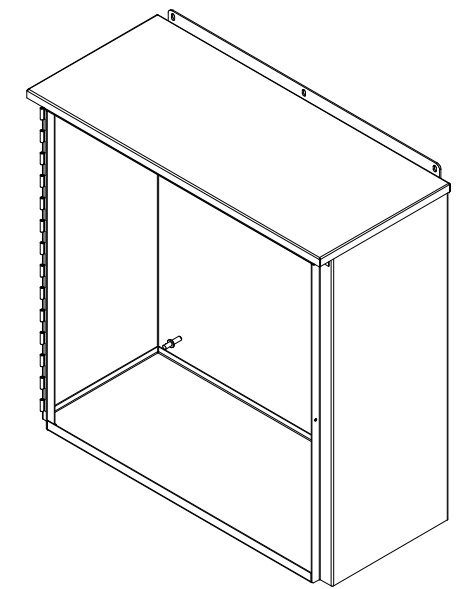
CD WELD 3/8-16 COLLAR STUD (4 PL.)



SECTION F-F



REAR VIEW



SECTION G-G

TACK WELD CAP TO ALL BLR & TOP ENDWALL FLANGES EVENLY & THROUGHOUT

DIMENSIONS ARE IN INCHES (MM). TOLERANCES UNLESS OTHERWISE SPECIFIED ARE AS FOLLOWS:
 .X = ±.06 (1.6)
 .XX = ±.031 (.8)
 .XXX = ±.016 (.25)
 Ø = ±.005
 ANGLE TOL ± 1'



WIEGMANN
 FREEBURG, ILLINOIS, USA

-NOTICE- THIS DRAWING IS THE PROPERTY OF WIEGMANN, A DIVISION OF HUBBELL INCORPORATED. IT IS LOANED TO YOU AND MUST NOT BE USED IN ANY WAY DETRIMENTAL TO THE INTEREST OF WIEGMANN.

PART NUMBER:
RHC303012

MATERIAL:
SEE NOTE

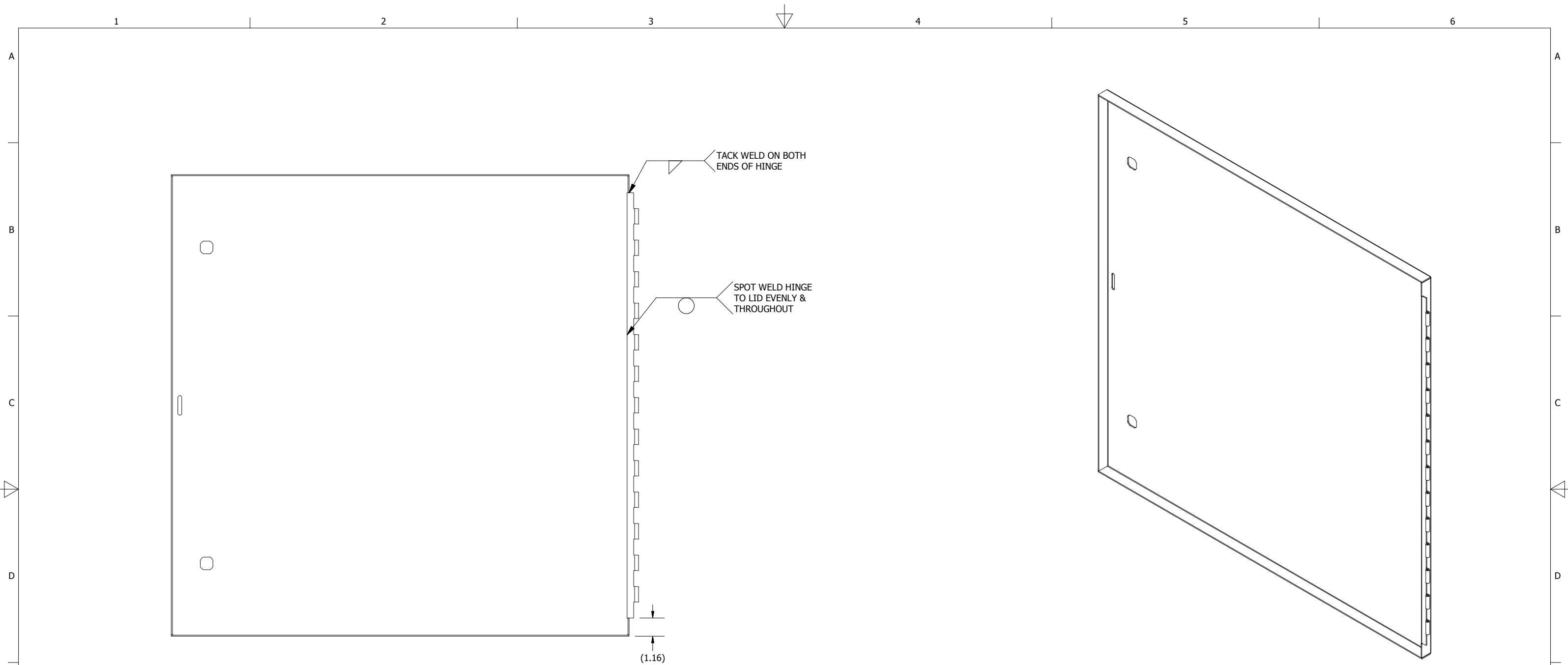
SCALE: NONE
 DRAWN BY: PS
 CHK'D BY: VR

CHK'D DATE: 6/26/2014
 CREATED ON: 6/26/2014

DESCRIPTION:
RHC, NEMA 3R ENCL., CS, 30X30X12

DWG. NO. HWD RHC303012_4.1
 REV. A

SHEET 8 OF 9



LID WELD INSIDE VIEW

DIMENSIONS ARE IN INCHES (MM). TOLERANCES UNLESS OTHERWISE SPECIFIED ARE AS FOLLOWS:
 .X = ±.06 (1.6)
 .XX = ±.031 (.8)
 .XXX = ±.016 (.25)
 Ø = ±.005
 ANGLE TOL ± 1'



WIEGMANN
 FREEBURG, ILLINOIS, USA

-NOTICE- THIS DRAWING IS THE PROPERTY OF WIEGMANN, A DIVISION OF HUBBELL INCORPORATED. IT IS LOANED TO YOU AND MUST NOT BE USED IN ANY WAY DETRIMENTAL TO THE INTEREST OF WIEGMANN.

PART NUMBER:
 RHC303012

MATERIAL:
 SEE NOTE

SCALE: NONE
 DRAWN BY: PS
 CHK'D BY: VR

CHK'D DATE: 6/26/2014
 CREATED ON: 6/26/2014
 DWG. NO. HWDRHC303012_4.2
 REV. A

DESCRIPTION:
 RHC, NEMA 3R ENCL., CS, 30X30X12

SHEET 9 OF 9