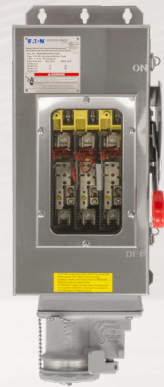


Plugs & receptacles
Arktite® WSRD interlocked receptacles

CROUSE-HINDS
SERIES

Arktite®

interlocked receptacles
for heavy industrial areas



EATON

Powering Business Worldwide

A full-page background image of an industrial setting, likely a foundry or steel mill. The scene is dominated by a large, dark, textured metal structure in the foreground, possibly a ladle or a mold. In the background, there are various industrial components, including pipes, ladders, and structural beams. A bright orange glow emanates from the upper left, suggesting molten metal or intense heat. Several bright orange sparks are visible in the lower left corner, falling from above. The overall color palette is a mix of dark blues and greys, with strong orange and yellow highlights from the heat source.

Safe, portable power.

Arktite

interlocked receptacles

Arktite interlocked receptacles prevent engagement and disengagement of the plug under load, providing safe, portable connections and extended product life.

Fusible or non-fusible versions available in 30, 60 and 100 amp configurations.

Engineered for safety:

- The switch enclosure and receptacle are interlocked with the body and operating mechanism. The enclosure cannot be opened when the plug is engaged and switch is in ON position
- Switch cannot be turned on with enclosure door open
- Interlock mechanism on the receptacle prevents plug from being disengaged under load

Applications:

- Used as a service outlet for portable or fixed electrical equipment, such as generators, compressors, welders, portable tools, conveyors, lighting systems and similar equipment
- Designed for use in non-hazardous areas where dust, moisture and corrosion may be a problem
- Designed for flush or surface mounting
- A fusible switch, when used, provides short circuit protection



Specifications

Electrical ratings:

- 3- and 4-pole; fusible or non-fusible
- 240 VAC, 250 VDC, 480 VAC, 600 VAC
- 30, 60, 100 amp
- Max. HP ratings: 15 to 75 HP

Sheet steel model

Certifications:

NEC/CEC standard:

- Enclosure Type 3R, 12

UL standard:

- UL Listed – UL98, UL1682

cUL standard:

- cUL Listed – Certified by UL to CSA standards C22.2 Nos. 4, 182.1

Standard materials:

- Enclosure: sheet steel
- Hardware: stainless steel
- Receptacle housing: copper-free aluminum
- Contacts: naval brass
- Interlock mechanism: stainless steel

Standard finishes:

- Aluminum: natural
- Brass: natural

Stainless steel model

Certifications:

NEC/CEC standard:

- Enclosure Type 4, 4X

UL standard:

- UL Listed – UL98, UL1682

cUL standard:

- cUL Listed – Certified by UL to CSA standards C22.2 Nos. 4, 182.1

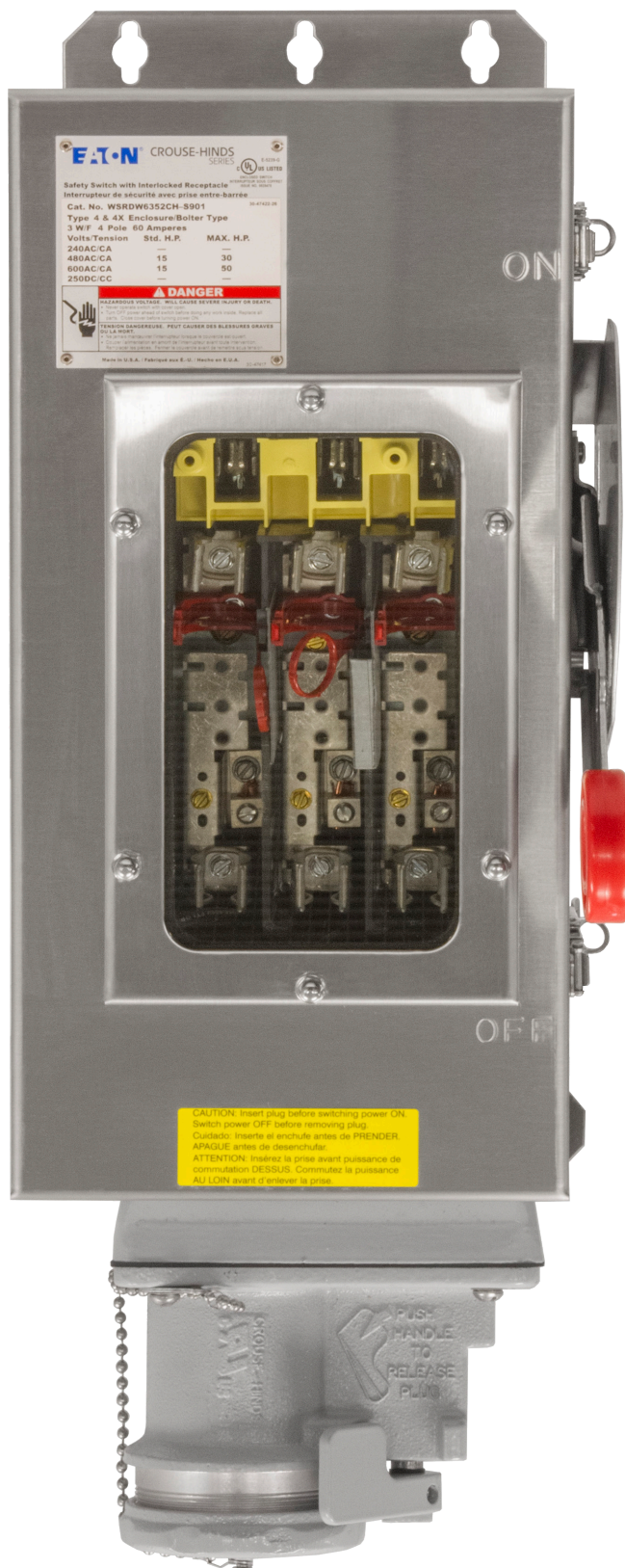
Standard materials:

- Enclosure: Type 304 stainless steel
- Hardware: stainless steel
- Receptacle housing: copper-free aluminum
- Contacts: naval brass
- Interlock mechanism: stainless steel

Standard finishes:

- Stainless steel: natural (enclosure)
- Aluminum: Corro-free™ epoxy powder (receptacle)
- Brass: natural (contacts)

Features and benefits

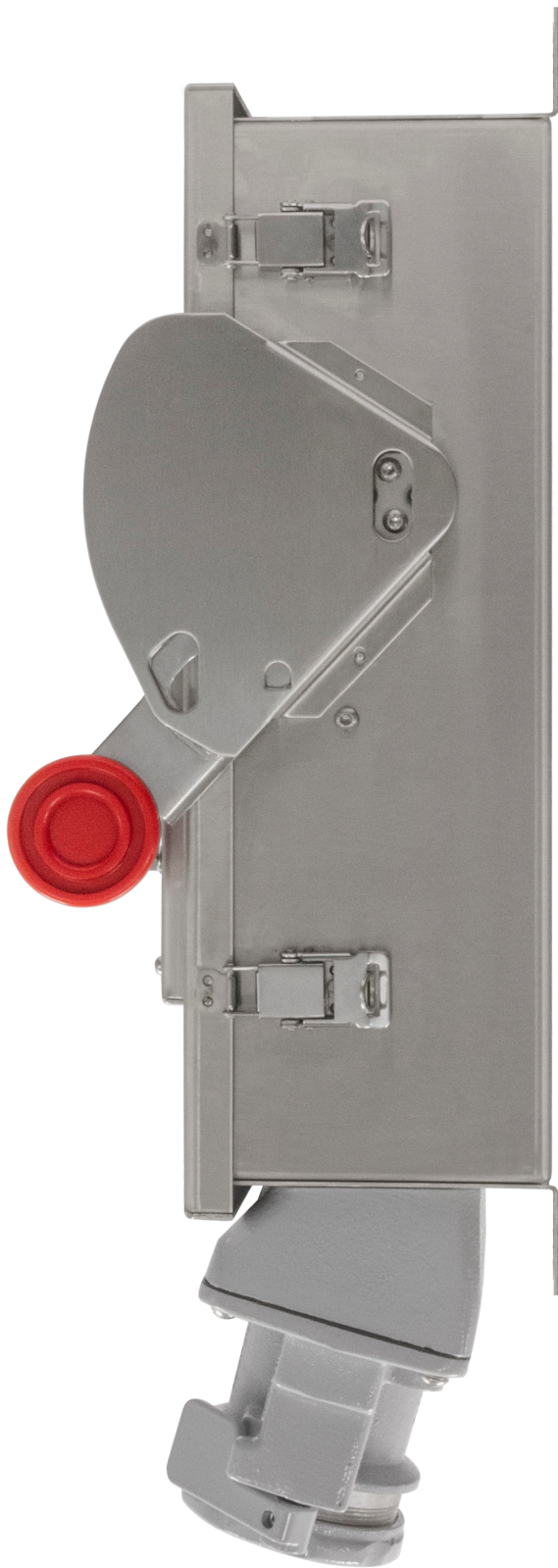


Easy access and built to last:

- Optional window allows viewing of both visible blade and indicating type fuses
- HP rated enclosed switch for motor load applications
- Optional 22.5° rotated interior of receptacle allows for differentiation when used on circuits of different voltages
- Ground bar supplied as standard and connected to 4th wire in receptacle

Engineered for safety:

- The switch enclosure and receptacle are interlocked with the body and operating mechanism. The enclosure cannot be opened when the plug is engaged and switch is in ON position
- Switch cannot be turned on with enclosure door open
- Interlock mechanism on the receptacle prevents plug from being disengaged under load
- Factory adjusted interlock rod assures optimal interface with receptacle



Rugged enclosure design:

- Tool-free cover latches for quick and easy access
- Corrosion- and impact-resistant
- Type 4X, watertight and IP66 ratings (model dependent)
- Door with seamless gasket prevents moisture ingress
- Handle with insulated grip features a positive stop in both ON and OFF positions
- Complies with OSHA lockout/tagout requirements
- Corro-free™ powder coat epoxy and threaded cap ensure added corrosion resistance (stainless steel versions)
- Split pin, self-wiping naval brass contacts in receptacle provide nearly 360° contact and ensure better contact life



Arktite plugs:

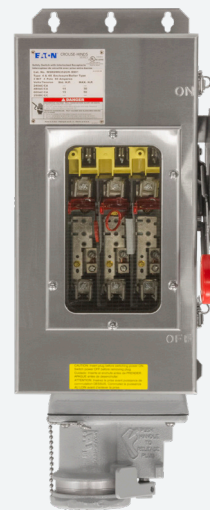
- Plug locks into receptacle, providing positive worry-free power engagement
- Locking ring provides a watertight seal at connection point

Available in sheet or stainless steel

Sheet steel models



Stainless steel model



Ordering information: receptacle

Part number example

WSRDW33542CH-S901-S483-S4

Arktite interlocked receptacle with window, Eaton Cutler-Hammer 30 amp disconnect switch, non-fusible, style 2, stainless steel, auxiliary contact and 22.5° rotated plug interior

WSRD

Series

WSRD

Arktite interlocked receptacle

Door style

BLANK

Solid door

W

Windowed door

W

Fusibility

35

Fusible

354

Non-fusible

Eaton Cutler-Hammer safety disconnect switch

3

Voltage

3

30 amp

6

60 amp

10

100 amp

354

2

Style

1

Style 1 (3W/3P)

2

Style 2 (3W/4P)

CH

–

S901

Enclosure material/finish

S901*

Stainless steel, natural finish; grey epoxy painted receptacle

BLANK

Stamped steel, grey epoxy painted; natural finish receptacle

* Only available for style 2 3W4P.

–

S483

Options

S483

Factory installed auxiliary contacts

S4

Rotated interior (22.5° right)

If ordering both options, list as stated in the above part number example.

–

S4

Dimensions

Solid door (no window) model

	30A	60A	100A
A	5.50 [140]	5.50 [140]	5.50 [140]
B	8.94 [227]	8.44 [214]	11.14 [291]
C	7.73 [196]	7.73 [196]	11.48 [291]
D	10.21 [259]	10.20 [259]	10.21 [259]
E	8.22 [209]	8.22 [209]	8.22 [209]
F	5.50 [140]	5.50 [140]	5.50 [140]
G	15.82 [402]	15.82 [402]	21.69 [551]
H	19.09 [485]	19.09 [485]	24.96 [634]
I	23.43 [595]	24.60 [624]	31.05 [788]
J	5.97 [152]	7.14 [181]	7.73 [196]

Dimensions: Inches [mm]

Mounting (center-to-center)

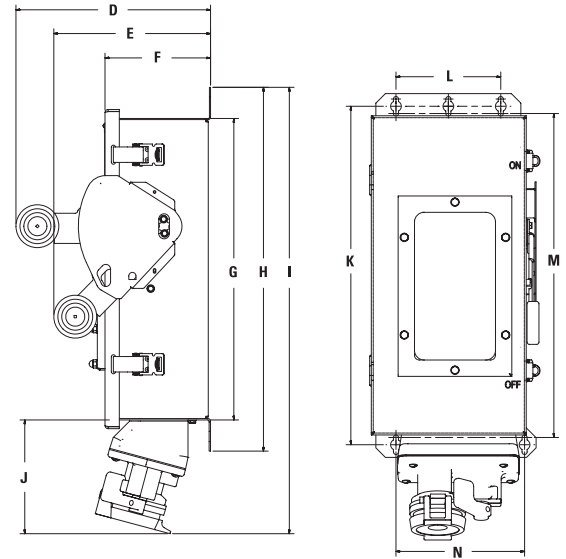
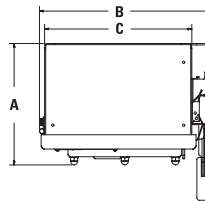
	30A	60A	100A
K	17.76 [451]	17.76 [451]	23.63 [600]
L	5.50 [140]	5.50 [140]	8.50 [216]
M	17.00 [432]	17.00 [432]	22.87 [581]
N	6.75 [171]	6.75 [171]	9.75 [248]

Dimensions: Inches [mm]

Windowed door model

	30A	60A	100A
A	6.37 [162]	6.37 [162]	6.37 [162]
B	8.94 [227]	8.40 [213]	10.76 [273]
C	7.73 [196]	7.73 [196]	11.97 [304]
D	10.21 [259]	10.21 [259]	10.21 [259]
E	8.22 [209]	8.22 [209]	8.22 [209]
F	5.54 [141]	5.54 [141]	5.54 [141]
G	15.82 [402]	15.82 [402]	21.69 [551]
H	19.09 [485]	19.09 [485]	24.96 [634]
I	23.43 [595]	24.60 [624]	31.05 [788]
J	5.97 [152]	7.14 [181]	7.73 [196]

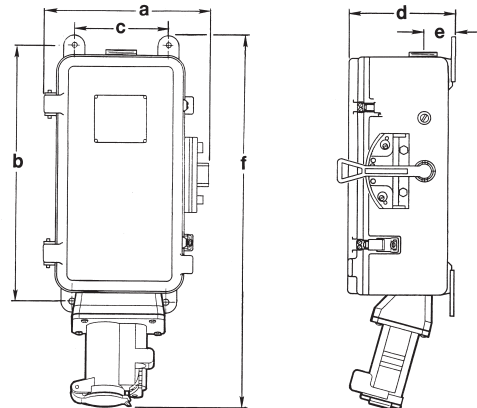
Dimensions: Inches [mm]



Additional models: WSR



Dimensions:



	30A	60A	100A
A	11 3/4 [298]	11 3/4 [298]	14 7/8 [378]
B	20 1/16 [510]	20 1/16 [510]	26 5/16 [668]
C	6 9/16 [167]	6 9/16 [167]	9 9/16 [243]
D	7 1/4 [184]	7 1/4 [184]	8 1/4 [210]
E	2 15/32 [63]	2 15/32 [63]	2 7/8 [73]
F	27 11/16 [703]	28 11/16 [703]	35 3/8 [899]

Dimensions: Inches [mm]

Certifications:

NEC/CEC standard:

- Enclosure: NEMA 3R, 4, 12

UL standards:

- UL98
- cUL Standard C22.2 No. 4

Standard materials:

- Enclosure: copper-free aluminum
- Hardware: stainless steel
- Receptacle housing: copper-free aluminum
- Contacts: brass

Ordering information:

					Maximum horsepower rating		
Switch type	System	Amps	Conduit entry†	Part number	240 VAC	480 VAC	600 VAC
Fusible	Style 1: 3-wire, 3-pole	30	1.00	WSR3351*	7.5	15	20
		60	1.25	WSR6351*	15	30	50
		100	1.50	WSR10351*	30	60	75
	Style 2: 3-wire, 4-pole	30	1.00	WSR3352*	7.5	15	20
		60	1.25	WSR6352*	15	30	50
		100	1.50	WSR10352*	30	60	75
Non-fusible	Style 1: 3-wire, 3-pole	30	1.00	WSR33541	7.5	15	20
		60	1.25	WSR63541	15	30	50
		100	1.50	WSR103541	30	60	75
	Style 2: 3-wire, 4-pole	30	1.00	WSR33542	7.5	15	20
		60	1.25	WSR63542	15	30	50
		100	1.50	WSR103542	30	60	75

* Arranged for NEC Class H fuses. May be converted to NEC Class J fuses.

† Furnished with reducer, which may be removed to obtain one size larger opening. Locknut and bushing must meet NEC requirements.

**U.S. (global headquarters):
Eaton's Crouse-Hinds business**

1201 Wolf Street
Syracuse, NY 13208

(866) 764-5454
FAX: (315) 477-5179
FAX Orders Only:
(866) 653-0640

crousecustomerctr@eaton.com

Eaton's B-Line business

509 West Monroe Street
Highland, IL 62249

800-851-7415
FAX: 618-654-1917
Eaton.com/b-lineseries

IEC Electrical

(CEAG products)

49 (0) 6271 806-500
FAX: 49 (0) 6271 806-476

Info-ex@eaton.com

Airport Lighting

866-764-5454

CrouseCustomerCTR@Eaton.com

Mexico/Latin America/Caribbean

52-555-804-4000
FAX: 52-555-804-4020

ventascentromex@eaton.com

Haz Area Communications

(MEDC, Hernis, Oxalis, FHF Sonix)

44 (0) 1623 444400
FAX: 44 (0) 1623 444531

MEDCadmin@Eaton.com

Canada

Toll Free: 800-265-0502
FAX: (800) 263-9504
FAX Orders only: (866) 653-0645

China

86-21-2899-3600
FAX: 86-21-2899-4055
echsales@eaton.com

Process instrumentation

(MTL products)

44 (0) 1582 723633
FAX: 44 (0) 1582 422283

enquiry@mtl-inst.com

Eaton Middle East

9714-8066100
FAX: 9714-8894813
CHBL-ME@eaton.com

Australia

61-2-8787-2777
FAX: 61-2-9609-2342
crousehindsanz@eaton.com

For more information:

If further assistance is required, please contact an authorized Eaton Distributor, Sales Office, or Customer Service Department.

Eaton
1000 Eaton Boulevard
Cleveland, OH 44122
United States
Eaton.com

© 2023 Eaton
All Rights Reserved
Printed in USA
Publication No. 5268-0323
March 2023

Eaton is a registered trademark.

All other trademarks are property of their respective owners.

Follow us on social media to get the latest product and support information.

